

À des fins de recherche uniquement

Anticorps Polyclonal de lapin anti-Ezrin



Numéro de catalogue: 26056-1-AP

Phare

11 Publications

Informations de base

Numéro de catalogue:

26056-1-AP

Taille:

150ul, Concentration: 800 µg/ml by Nanodrop and 313 µg/ml by Bradford method using BSA as the standard;

Hôte:

Lapin

Isotype:

IgG

Immunogen Catalog Number:

AG23530

Numéro d'acquisition GenBank:

BC013903

Identification du gène (NCBI):

7430

Nom complet:

ezrin

MW calculé

69 kDa

MW observés:

70-75 kDa

Méthode de purification:

Purification par affinité contre l'antigène

Dilutions recommandées:

WB 1:5000-1:50000

IP 0.5-4.0 ug for IP and 1:1000-1:4000 for WB

IHC 1:500-1:2000

IF 1:20-1:200

Applications

Applications testées:

IF, IHC, IP, WB, ELISA

Demandes citées:

IF, RIP, WB

Spécificité de l'espèce:

Humain, souris

Espèces citées:

Humain, souris

Remarque-IHC: il est suggéré de démasquer l'antigène avec un tampon de TE buffer pH 9,0; (*) A défaut, le démasquage de l'antigène peut être effectué avec un tampon citrate pH 6,0.

Contrôles positifs:

WB : cellules HeLa, cellules NIH/3T3, tissu rénal de souris

IP : cellules HeLa,

IHC : tissu d'estomac de souris, tissu d'intestin grêle humain

IF : cellules HeLa,

Informations générales

Publications notables

Autrice	Pubmed ID	Journal	Application
Jaroslav Suchanski	28938000	PLoS One	WB,IF
Krishnendu Khan	33086476	Int J Mol Sci	WB
Hongyu Zhang	28322315	Sci Rep	WB

Stockage

Stockage:

Stocker à -20°C. Stable pendant un an après l'expédition.

Tampon de stockage:

PBS avec azoture de sodium à 0,02 % et glycérol à 50 % pH 7,3

L'aliquotage n'est pas nécessaire pour le stockage à -20C

*** Les 20ul contiennent 0,1% de BSA.

For technical support and original validation data for this product please contact:

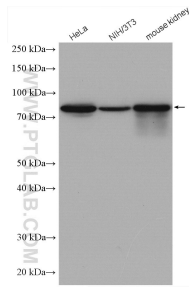
T: 1 (888) 4PTGLAB (1-888-478-4522) (toll free in USA), or 1(312) 455-8498 (outside USA)

E: proteintech@ptglab.com

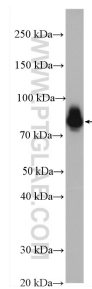
W: ptglab.com

This product is exclusively available under Proteintech Group brand and is not available to purchase from any other manufacturer.

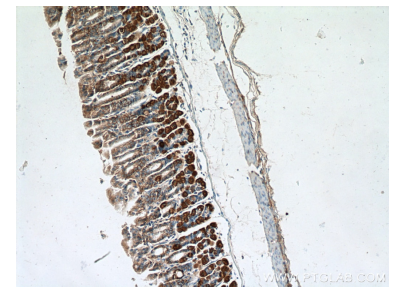
Données de validation sélectionnées



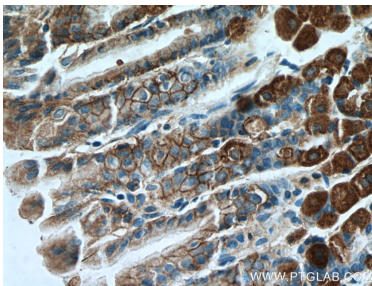
Various lysates were subjected to SDS PAGE followed by western blot with 26056-1-AP (Ezrin antibody) at dilution of 1:5000 incubated at room temperature for 1.5 hours.



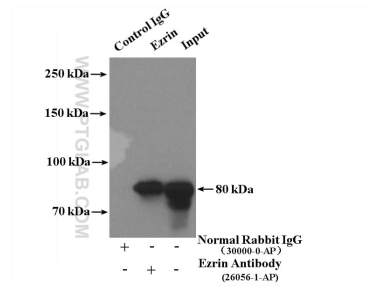
HeLa cells were subjected to SDS PAGE followed by western blot with 26056-1-AP (Ezrin antibody) at dilution of 1:10000 incubated at room temperature for 1.5 hours.



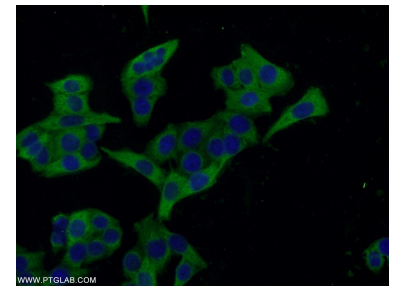
Immunohistochemical analysis of paraffin-embedded mouse stomach tissue slide using 26056-1-AP (Ezrin antibody) at dilution of 1:2000 (under 10x lens. Heat mediated antigen retrieval with Tris-EDTA buffer (pH 9.0).



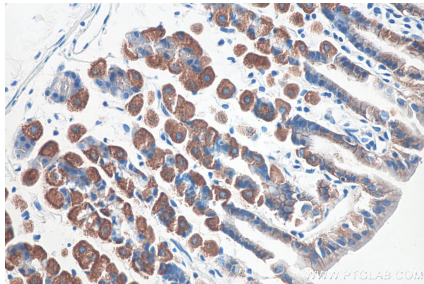
Immunohistochemical analysis of paraffin-embedded mouse stomach tissue slide using 26056-1-AP (Ezrin antibody) at dilution of 1:2000 (under 40x lens. Heat mediated antigen retrieval with Tris-EDTA buffer (pH 9.0).



IP Result of anti-Ezrin (IP:26056-1-AP, 4ug; Detection:26056-1-AP 1:2000) with HeLa cells lysate 3200ug.



Immunofluorescent analysis of HeLa cells using 26056-1-AP (Ezrin antibody) at dilution of 1:50 and Alexa Fluor 488-conjugated AffiniPure Goat Anti-Rabbit IgG(H+L).



Immunohistochemical analysis of paraffin-embedded mouse stomach tissue slide using 26056-1-AP (Ezrin antibody) at dilution of 1:8000 (under 40x lens).