

À des fins de recherche uniquement

Anticorps Polyclonal de lapin anti-RASIP1



Numéro de catalogue: 26064-1-AP

Informations de base

Numéro de catalogue: 26064-1-AP	Numéro d'acquisition GenBank: BC021860	Méthode de purification: Purification par affinité contre l'antigène
Taille: 150ul , Concentration: 300 µg/ml by Nanodrop and 233 µg/ml by Bradford method using BSA as the standard;	Identification du gène (NCBI): 54922	Dilutions recommandées: WB 1:200-1:1000 IHC 1:50-1:500 IF 1:10-1:100
Hôte: Lapin	Nom complet: Ras interacting protein 1	
Isotype: IgG	MW calculé 963 aa, 103 kDa	
Immunogen Catalog Number: AG22036	MW observés: 115 kDa	

Applications

Applications testées: IF, IHC, WB, ELISA	Contrôles positifs: WB : tissu pulmonaire de souris, cellules NIH/3T3 IHC : tissu cardiaque humain, tissu pulmonaire humain IF : cellules HepG2,
Spécificité de l'espèce: Humain, rat, souris	
Remarque-IHC: il est suggéré de démasquer l'antigène avec un tampon de TE buffer pH 9,0; (*) À défaut, le démasquage de l'antigène peut être effectué avec un tampon citrate pH 6,0.	

Informations générales

RASIP1, also named as Ras-interacting protein 1 or Rain, is a 963 amino acid protein, which contains one dilute domain and one Ras-associating domain. RASIP1 is highly expressed in heart and detected at lower levels in placenta and pancreas. RASIP1 is required for the proper formation of vascular structures that develop via both vasculogenesis and angiogenesis. RASIP1 acts as a critical and vascular-specific regulator of GTPase signaling, cell architecture, and adhesion, which is essential for endothelial cell morphogenesis and blood vessel tubulogenesis.

Stockage

Stockage:
Stocker à -20°C. Stable pendant un an après l'expédition.
Tampon de stockage:
PBS avec azoture de sodium à 0,02 % et glycérol à 50 % pH 7,3
L'aliquotage n'est pas nécessaire pour le stockage à -20C

*** Les 20ul contiennent 0,1% de BSA.

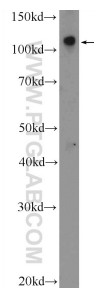
For technical support and original validation data for this product please contact:

T: 1 (888) 4PTGLAB (1-888-478-4522) (toll free in USA), or 1(312) 455-8498 (outside USA)

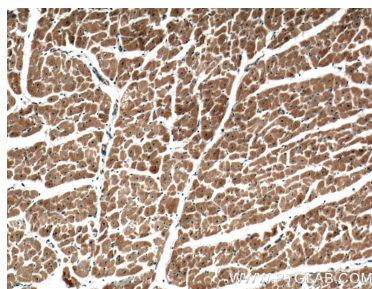
E: proteintech@ptglab.com
W: ptglab.com

This product is exclusively available under Proteintech Group brand and is not available to purchase from any other manufacturer.

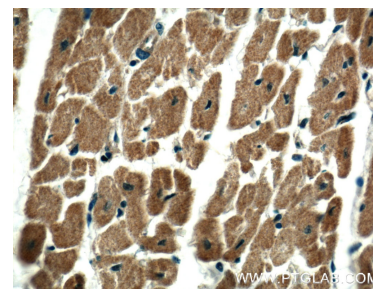
Données de validation sélectionnées



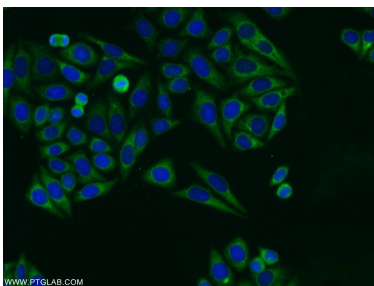
mouse lung tissue were subjected to SDS PAGE followed by western blot with 26064-1-AP (RASIP1 Antibody) at dilution of 1:300 incubated at room temperature for 1.5 hours.



Immunohistochemical analysis of paraffin-embedded human heart tissue slide using 26064-1-AP (RASIP1 Antibody) at dilution of 1:200 (under 10x lens).



Immunohistochemical analysis of paraffin-embedded human heart tissue slide using 26064-1-AP (RASIP1 Antibody) at dilution of 1:200 (under 40x lens).



Immunofluorescent analysis of HepG2 cells using 26064-1-AP (RASIP1 antibody) at dilution of 1:25 and Alexa Fluor 488-conjugated AffiniPure Goat Anti-Rabbit IgG(H+L).