

À des fins de recherche uniquement

Anticorps Polyclonal de lapin anti-AGPHD1



Numéro de catalogue: 26070-1-AP

Informations de base

Numéro de catalogue:

26070-1-AP

Taille:

150ul, Concentration: 450 µg/ml by Nanodrop and 300 µg/ml by Bradford method using BSA as the standard;

Hôte:

Lapin

Isotype:

IgG

Immunogen Catalog Number:

AG23420

Numéro d'acquisition GenBank:

BC132753

Identification du gène (NCBI):

123688

Nom complet:

similar to RIKEN cDNA C630028N24 gene

MW observés:

27-30 kDa

Méthode de purification:

Purification par affinité contre l'antigène

Dilutions recommandées:

WB 1:500-1:1000

Applications

Applications testées:

WB, ELISA

Spécificité de l'espèce:

Humain, souris

Contrôles positifs:

WB : tissu hépatique de souris,

Informations générales

AGPHD1 encodes the 5-hydroxy-L-lysine kinase which catalyzes the GTP-dependent phosphorylation of 5-hydroxy-L-lysine. It is primarily present in liver and kidneys, suggesting its major role in degrading 5Hyl derived from food. Its presence at lower levels in other tissues indicates that it participates also in the catabolism of 5Hyl derived from local collagen breakdown.

Stockage

Stockage:

Stocker à -20°C. Stable pendant un an après l'expédition.

Tampon de stockage:

PBS avec azoture de sodium à 0,02 % et glycérol à 50 % pH 7,3

L'aliquotage n'est pas nécessaire pour le stockage à -20C

*** Les 20ul contiennent 0,1% de BSA.

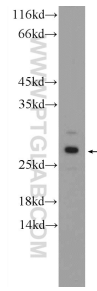
For technical support and original validation data for this product please contact:

T: 1 (888) 4PTGLAB (1-888-478-4522) (toll free in USA), or 1(312) 455-8498 (outside USA)

E: proteintech@ptglab.com
W: ptglab.com

This product is exclusively available under Proteintech Group brand and is not available to purchase from any other manufacturer.

Données de validation sélectionnées



mouse liver tissue were subjected to SDS PAGE followed by western blot with 26070-1-AP (LOC123688 Antibody) at dilution of 1:600 incubated at room temperature for 1.5 hours.