

À des fins de recherche uniquement

# Anticorps Polyclonal de lapin anti-METTL14



Numéro de catalogue: 26158-1-AP

Phare

75 Publications

## Informations de base

Numéro de catalogue: 26158-1-AP	Numéro d'acquisition GenBank: BC007449	Méthode de purification: Purification par protéine A
Taille: 150ul, Concentration: 550 µg/ml by Nanodrop;	Identification du gène (NCBI): 57721	Dilutions recommandées: WB 1:2000-1:10000
Hôte: Lapin	Nom complet: methyltransferase like 14	
Isotype: IgG	MW calculé 456 aa, 52 kDa	
Immunogen Catalog Number: AG14325	MW observés: 55-60 kDa	

## Applications

Applications testées: WB, ELISA	Contrôles positifs: WB : cellules A549, cellules HeLa, cellules NCCIT, cellules PC-3
Demandes citées: IF, IHC, IP, RIP, WB	
Spécificité de l'espèce: Humain	
Espèces citées: Humain, poulet, rat, singe	

## Informations générales

METTL14, is also named as Methyltransferase-like protein 14 or KIAA1627, is a 456 amino acid protein, which belongs to the MT-A70-like family and localized in the nucleus. The METTL3-METTL14 heterodimer forms a N6-methyltransferase complex that methylates adenosine residues of some mRNAs and regulates the circadian clock and differentiation of embryonic stem cells. N6-methyladenosine (m6A), which takes place at the 5'-[AG]GAC-3' consensus sites of some mRNAs, plays a role in the efficiency of mRNA splicing, processing and mRNA stability. M6A regulates the length of the circadian clock: acts as a early pace-setter in the circadian loop. M6A also acts as a regulator of mRNA stability: in embryonic stem cells (ESCs), m6A methylation of mRNAs encoding key naïve pluripotency-promoting transcripts results in transcript destabilization.

## Publications notables

Autrice	Pubmed ID	Journal	Application
Ying Yang	36149370	Chem Biodivers	WB,IP
Seiya Takemoto	34536357	Biochem Pharmacol	WB
FANG YANG	34733365	Oncol Lett	WB

## Stockage

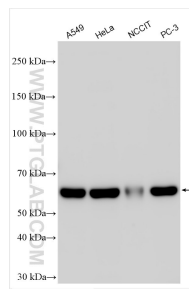
Stockage:  
Stocker à -20°C. Stable pendant un an après l'expédition.  
Tampon de stockage:  
PBS avec azoture de sodium à 0,02 % et glycérol à 50 % pH 7,3  
L'aliquotage n'est pas nécessaire pour le stockage à -20C

\*\*\* Les 20ul contiennent 0,1% de BSA.

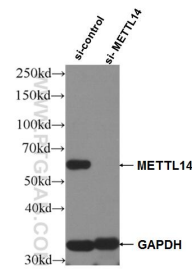
For technical support and original validation data for this product please contact:  
T: 1 (888) 4PTGLAB (1-888-478-4522) (toll free in USA), or 1(312) 455-8498 (outside USA)  
E: proteintech@ptglab.com  
W: ptglab.com

This product is exclusively available under Proteintech Group brand and is not available to purchase from any other manufacturer.

## Données de validation sélectionnées



Various lysates were subjected to SDS PAGE followed by western blot with 26158-1-AP (METTL14 antibody) at dilution of 1:5000 incubated at room temperature for 1.5 hours.



WB result of METTL14 antibody (26158-1-AP; 1:3000; incubated at room temperature for 1.5 hours) with sh-Control and sh-METTL14 transfected Raji cells.