

À des fins de recherche uniquement

Anticorps Polyclonal de lapin anti-Mcp1



Numéro de catalogue: 26161-1-AP

1 Publications

Informations de base

Numéro de catalogue:

26161-1-AP

Taille:

150ul , Concentration: 250 µg/ml by Nanodrop;

Hôte:

Lapin

Isotype:

IgG

Immunogen Catalog Number:

AG24085

Numéro d'acquisition GenBank:

NM-011333

Identification du gène (NCBI):

20296

Nom complet:

chemokine (C-C motif) ligand 2

MW observés:

16-20 kDa

Méthode de purification:

Purification par affinité contre l'antigène

Dilutions recommandées:

WB 1:500-1:2000

IF 1:10-1:100

Applications

Applications testées:

IF, WB, ELISA

Demandes citées:

IF

Spécificité de l'espèce:

Humain, souris

Espèces citées:

souris

Contrôles positifs:

WB : cellules RAW 264.7 traitées au LPS et à la bréfédine A,

IF : cellules HeLa,

Informations générales

Monocyte chemoattractant protein-1 (MCP-1/CCL2) is one of the key chemokines that regulate migration and infiltration of monocytes/macrophages. Both CCL2 and its receptor CCR2 have been demonstrated to be induced and involved in various diseases. Migration of monocytes from the blood stream across the vascular endothelium is required for routine immunological surveillance of tissues, as well as in response to inflammation.

Publications notables

Autrice	Pubmed ID	Journal	Application
Katharina Steiner	35783100	Front Cell Neurosci	IF

Stockage

Stockage:

Stocker à -20°C. Stable pendant un an après l'expédition.

Tampon de stockage:

PBS avec azoture de sodium à 0,02 % et glycérol à 50 % pH 7,3

L'aliquotage n'est pas nécessaire pour le stockage à -20C

*** Les 20ul contiennent 0,1% de BSA.

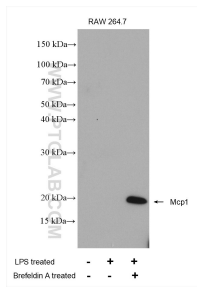
For technical support and original validation data for this product please contact:

T: 1 (888) 4PTGLAB (1-888-478-4522) (toll free in USA), or 1(312) 455-8498 (outside USA)

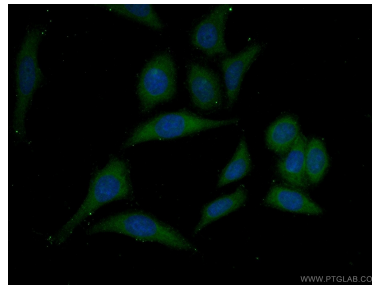
E: proteintech@ptglab.com
W: ptglab.com

This product is exclusively available under Proteintech Group brand and is not available to purchase from any other manufacturer.

Données de validation sélectionnées



Untreated RAW 264.7 cells, RAW 264.7 cells (treated with 1 µg/ml LPS 20 hours then add 300 ng/ml Brefeldin A for 4 hours) were subjected to SDS PAGE followed by western blot with 26161-1-AP (Mcp1 antibody) at dilution of 1:1000 incubated at room temperature for 1.5 hours.



Immunofluorescent analysis of (-20°C Ethanol) fixed HeLa cells using 26161-1-AP (Mcp1 antibody) at dilution of 1:25 and Alexa Fluor 488-conjugated AffiniPure Goat Anti-Rabbit IgG(H+L).