

À des fins de recherche uniquement

Anticorps Polyclonal de lapin anti-SLC13A3



Numéro de catalogue: 26182-1-AP

1 Publications

Informations de base

Numéro de catalogue:

26182-1-AP

Taille:

150ul, Concentration: 650 µg/ml by Nanodrop and 347 µg/ml by Bradford method using BSA as the standard;

Hôte:

Lapin

Isotype:

IgG

Immunogen Catalog Number:

AG24183

Numéro d'acquisition GenBank:

BC035966

Identification du gène (NCBI):

64849

Nom complet:

solute carrier family 13 (sodium-dependent dicarboxylate transporter), member 3

MW calculé

602 aa, 67 kDa

MW observés:

55-60 kDa

Méthode de purification:

Purification par affinité contre l'antigène

Dilutions recommandées:

WB 1:500-1:2000

Applications

Applications testées:

WB, ELISA

Demandes citées:

WB

Spécificité de l'espèce:

Humain, souris

Espèces citées:

Humain

Contrôles positifs:

WB : tissu rénal de souris, cellules HEK-293

Informations générales

SLC13A3, also named NADC3 and SDCT2, belongs to the SLC13A/DASS transporter (TC 2.A.47) family and NADC subfamily. SLC13A3 encodes the plasma membrane Na⁺/Dicarboxylate Cotransporter 3 (NaDC3), which imports inside the cell four to six carbon dicarboxylates as well as N-acetylaspartate (NAA). SLC13A3 is mainly expressed in kidney, but also in brain, liver, placenta and eye (PMID: 30635937). This antibody detected the 55-60 kDa band in SDS-PAGE. However, the 55 kDa (nonglycosylated) and 85 kDa (glycosylated) bands have been reported in the article (PMID: 27053689).

Publications notables

Autrice	Pubmed ID	Journal	Application
Anja Weber	30037119	Int J Mol Sci	WB

Stockage

Stockage:

Stocker à -20°C. Stable pendant un an après l'expédition.

Tampon de stockage:

PBS avec azoture de sodium à 0,02 % et glycérol à 50 % pH 7,3

L'aliquotage n'est pas nécessaire pour le stockage à -20C

*** Les 20ul contiennent 0,1% de BSA.

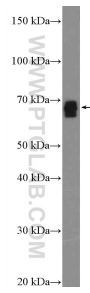
For technical support and original validation data for this product please contact:

T: 1 (888) 4PTGLAB (1-888-478-4522) (toll free in USA), or 1(312) 455-8498 (outside USA)

E: proteintech@ptglab.com
W: ptglab.com

This product is exclusively available under Proteintech Group brand and is not available to purchase from any other manufacturer.

Données de validation sélectionnées



mouse kidney tissue were subjected to SDS PAGE followed by western blot with 26182-1-AP (SLC13A3 Antibody) at dilution of 1:1000 incubated at room temperature for 1.5 hours.