

À des fins de recherche uniquement

Anticorps Polyclonal de lapin anti-SNAI1



Numéro de catalogue: 26183-1-AP

20 Publications

Informations de base

Numéro de catalogue:

26183-1-AP

Taille:

150ul, Concentration: 600 µg/ml by Nanodrop and 333 µg/ml by Bradford method using BSA as the standard;

Hôte:

Lapin

Isotype:

IgG

Immunogen Catalog Number:

AG24248

Numéro d'acquisition GenBank:

BC012910

Identification du gène (NCBI):

6615

Nom complet:

snail homolog 1 (Drosophila)

MW calculé

264 aa, 29 kDa

MW observés:

29-35 kDa

Méthode de purification:

Purification par affinité contre l'antigène

Dilutions recommandées:

WB 1:500-1:2000

IF 1:50-1:500

Applications

Applications testées:

IF, WB, ELISA

Demandes citées:

CoIP, IF, IHC, WB

Spécificité de l'espèce:

Humain, souris

Espèces citées:

Humain, souris

Contrôles positifs:

WB : cellules HeLa, cellules NIH/3T3, cellules PC-3

IF : cellules HeLa,

Informations générales

SNAI1, a member of SNAI1 family of protein, participates in the epithelial to mesenchymal transition (EMT) and formation and maintenance of embryonic mesoderm. The snail family share a common structural, that a highly conserved C-terminal region containing a zinc finger transcription factor. SNAI1 interacts with other corepressor, such as Ajuba, PRMT5 and SIN3a or HDAC1 and 2, to repress the target gene. As the phosphorylation modification of SNAI1 protein, the range of molecular weight of SNAI1 is about 25-30 kDa (PMID: 22276203). Once phosphorylated (probably on Ser-107, Ser-111, Ser-115 and Ser-119) it is exported from the nucleus to the cytoplasm where subsequent phosphorylation of the destruction motif and ubiquitination involving BTRC occurs.

Publications notables

Autrice	Pubmed ID	Journal	Application
Huizhu Liu	28983614	Mol Med Rep	WB
Jingjing Wu	29077259	J Cell Mol Med	WB
Fan Feng	36284444	Cancer Med	WB

Stockage

Stockage:

Stocker à -20°C. Stable pendant un an après l'expédition.

Tampon de stockage:

PBS avec azoture de sodium à 0,02 % et glycérol à 50 % pH 7,3

L'aliquotage n'est pas nécessaire pour le stockage à -20C

*** Les 20ul contiennent 0,1% de BSA.

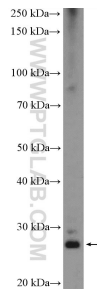
For technical support and original validation data for this product please contact:

T: 1 (888) 4PTGLAB (1-888-478-4522) (toll free in USA), or 1(312) 455-8498 (outside USA)

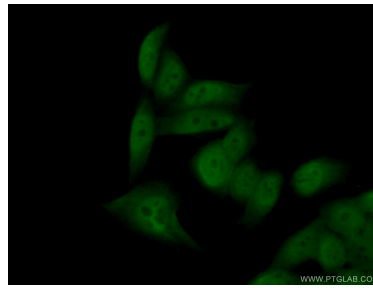
E: proteintech@ptglab.com
W: ptglab.com

This product is exclusively available under Proteintech Group brand and is not available to purchase from any other manufacturer.

Données de validation sélectionnées



HeLa cells were subjected to SDS PAGE followed by western blot with 26183-1-AP (SNAI1 Antibody) at dilution of 1:1000 incubated at room temperature for 1.5 hours.



Immunofluorescent analysis of (10% Formaldehyde) fixed HeLa cells using 26183-1-AP (SNAI1 antibody) at dilution of 1:50 and Alexa Fluor 488-conjugated AffiniPure Goat Anti-Rabbit IgG(H+L).