

À des fins de recherche uniquement

# Anticorps Polyclonal de lapin anti-SLC13A3



Numéro de catalogue: 26184-1-AP

## Informations de base

<b>Numéro de catalogue:</b> 26184-1-AP	<b>Numéro d'acquisition GenBank:</b> BC035966	<b>Méthode de purification:</b> Purification par affinité contre l'antigène
<b>Taille:</b> 150ul , Concentration: 1200 µg/ml by Nanodrop and 480 µg/ml by Bradford method using BSA as the standard;	<b>Identification du gène (NCBI):</b> 64849	<b>Dilutions recommandées:</b> IP 0.5-4.0 ug for IP and 1:500-1:1000 for WB
<b>Hôte:</b> Lapin	<b>Nom complet:</b> solute carrier family 13 (sodium-dependent dicarboxylate transporter), member 3	<b>IHC 1:200-1:4000</b>
<b>Isotype:</b> IgG	<b>MW calculé</b> 602 aa, 67 kDa	
<b>Immunogen Catalog Number:</b> AG24182	<b>MW observés:</b> 65-70 kDa	

## Applications

<b>Applications testées:</b> IHC, IP, ELISA	<b>Contrôles positifs:</b> IP : tissu rénal de souris, IHC : tissu rénal humain,
<b>Spécificité de l'espèce:</b> Humain, souris	
<b>Remarque-IHC: il est suggéré de démasquer l'antigène avec un tampon de TE buffer pH 9.0; (*) À défaut, le démasquage de l'antigène peut être effectué avec un tampon citrate pH 6,0.</b>	

## Informations générales

SLC13A3, also named NADC3 and SDCT2, belongs to the SLC13A/DASS transporter (TC 2.A.47) family and NADC subfamily. SLC13A3 encodes the plasma membrane Na<sup>+</sup> /Dicarboxylate Cotransporter 3 (NaDC3), which imports inside the cell four to six carbon dicarboxylates as well as N-acetylaspartate (NAA). SLC13A3 is mainly expressed in kidney, but also in brain, liver, placenta and eye (PMID: 30635937).

## Stockage

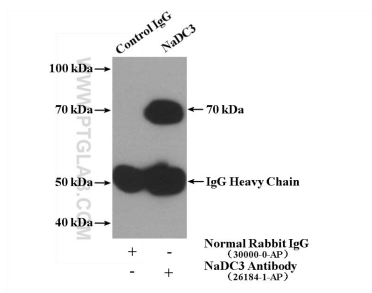
**Stockage:**  
Stocker à -20°C. Stable pendant un an après l'expédition.  
**Tampon de stockage:**  
PBS avec azoture de sodium à 0,02 % et glycérol à 50 % pH 7,3  
L'aliquotage n'est pas nécessaire pour le stockage à -20C

\*\*\* Les 20ul contiennent 0,1% de BSA.

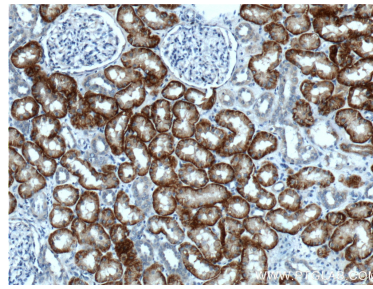
For technical support and original validation data for this product please contact:  
T: 1 (888) 4PTGLAB (1-888-478-4522) (toll free in USA), or 1(312) 455-8498 (outside USA)  
E: proteintech@ptglab.com  
W: ptglab.com

This product is exclusively available under Proteintech Group brand and is not available to purchase from any other manufacturer.

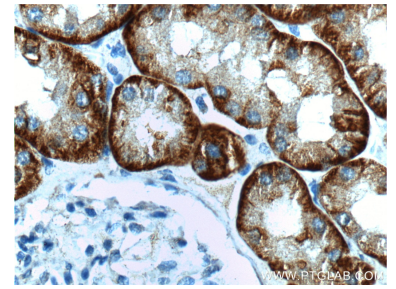
## Données de validation sélectionnées



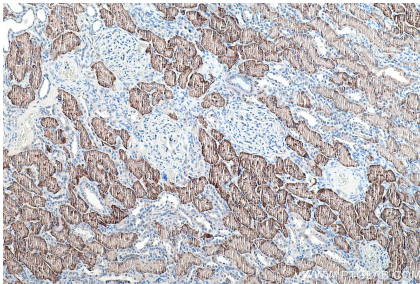
IP Result of anti-NaDC3 (IP:26184-1-AP, 4ug; Detection:26184-1-AP 1:500) with mouse kidney tissue lysate 4000ug.



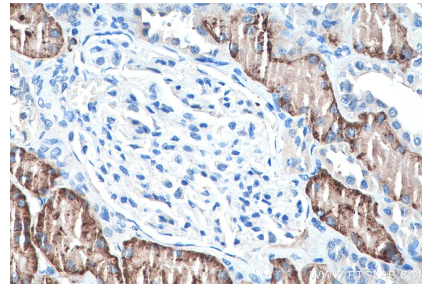
Immunohistochemical analysis of paraffin-embedded human kidney tissue slide using 26184-1-AP (NaDC3 antibody at dilution of 1:200 (under 10x lens).



Immunohistochemical analysis of paraffin-embedded human kidney tissue slide using 26184-1-AP (NaDC3 antibody at dilution of 1:200 (under 40x lens).



Immunohistochemical analysis of paraffin-embedded human kidney tissue slide using 26184-1-AP (SLC13A3 antibody) at dilution of 1:4000 (under 10x lens). Heat mediated antigen retrieval with Tris-EDTA buffer (pH 9.0).



Immunohistochemical analysis of paraffin-embedded human kidney tissue slide using 26184-1-AP (SLC13A3 antibody) at dilution of 1:4000 (under 40x lens). Heat mediated antigen retrieval with Tris-EDTA buffer (pH 9.0).