

À des fins de recherche uniquement

Anticorps Polyclonal de lapin anti-DRP1 (N-terminal)



Numéro de catalogue: 26187-1-AP

4 Publications

Informations de base

Numéro de catalogue:

26187-1-AP

Taille:

150ul, Concentration: 500 µg/ml by Nanodrop and 273 µg/ml by Bradford method using BSA as the standard;

Hôte:

Lapin

Isotype:

IgG

Immunogen Catalog Number:

AG24249

Numéro d'acquisition GenBank:

BC024590

Identification du gène (NCBI):

10059

Nom complet:

dynamin 1-like

MW calculé

710 aa, 79 kDa

MW observés:

70-78 kDa

Méthode de purification:

Purification par affinité contre l'antigène

Dilutions recommandées:

WB 1:5000-1:50000

IP 0.5-4.0 ug for IP and 1:500-1:1000 for WB

Applications

Applications testées:

FC, IP, WB, ELISA

Demandes citées:

WB

Spécificité de l'espèce:

Humain, rat, souris

Espèces citées:

Humain

Contrôles positifs:

WB : tissu cérébral de souris, tissu cérébral de rat

IP : tissu cérébral de souris,

Informations générales

DNM1L (Dynamine-1-like protein), also known as dynamin-related protein 1 (DRP1), belongs to the dynamin family of large GTPases that mediate membrane remodeling during a variety of cellular processes. DNM1L has an important role in the division of growing mitochondria and peroxisomes and also mediates outer mitochondrial membrane fission in mammalian cells. DNM1L is ubiquitously expressed with abundant expression in skeletal muscle, heart, kidney and brain. Variable isoforms of DNM1L have been reported in a tissue-specific manner due to the alternative splicing.

Publications notables

Autrice	Pubmed ID	Journal	Application
Yu-Lin Deng	35142655	Asian J Androl	WB
Chang Lu	33940385	Biochem Biophys Res Commun	WB
Stephanie Pei Tung Yiu	37311461	Mol Cell	

Stockage

Stockage:

Stocker à -20°C. Stable pendant un an après l'expédition.

Tampon de stockage:

PBS avec azoture de sodium à 0,02 % et glycérol à 50 % pH 7,3

L'aliquotage n'est pas nécessaire pour le stockage à -20C

*** Les 20ul contiennent 0,1% de BSA.

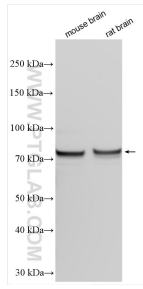
For technical support and original validation data for this product please contact:

T: 1 (888) 4PTGLAB (1-888-478-4522) (toll free in USA), or 1(312) 455-8498 (outside USA)

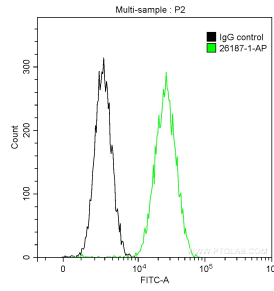
E: proteintech@ptglab.com
W: ptglab.com

This product is exclusively available under Proteintech Group brand and is not available to purchase from any other manufacturer.

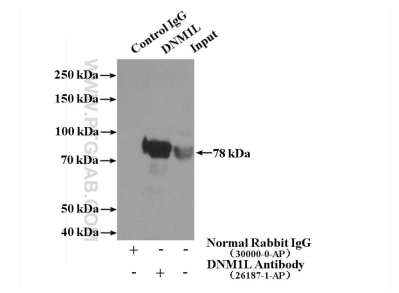
Données de validation sélectionnées



Various lysates were subjected to SDS PAGE followed by western blot with 26187-1-AP (DRP1 (N-terminal) antibody) at dilution of 1:20000 incubated at room temperature for 1.5 hours.



1×10^6 HeLa cells were intracellularly stained with 0.2 ug Anti-Human DRP1 (N-terminal) (26187-1-AP) and CoraLite®488-Conjugated AffiniPure Goat Anti-Rabbit IgG(H+L) at dilution 1:1000 (green), and 0.2 ug Control Antibody. Cells were fixed with 90% MeOH.



IP Result of anti-DNM1L, DLP1 (IP:26187-1-AP, 4ug; Detection:26187-1-AP 1:500) with mouse brain tissue lysate 4000ug.