

À des fins de recherche uniquement

# Anticorps Polyclonal de lapin anti-Gamma Tubulin



Numéro de catalogue: 26195-1-AP

## Informations de base

<b>Numéro de catalogue:</b> 26195-1-AP	<b>Numéro d'acquisition GenBank:</b> BC000619	<b>Méthode de purification:</b> Purification par affinité contre l'antigène
<b>Taille:</b> 150ul , Concentration: 600 µg/ml by Nanodrop and 287 µg/ml by Bradford method using BSA as the standard;	<b>Identification du gène (NCBI):</b> 7283	<b>Dilutions recommandées:</b> WB 1:500-1:1000 IF 1:250-1:1000
<b>Hôte:</b> Lapin	<b>Nom complet:</b> tubulin, gamma 1	
<b>Isotype:</b> IgG	<b>MW calculé:</b> 51 kDa	
<b>Immunogen Catalog Number:</b> AG23575	<b>MW observés:</b> 50-55 kDa	

## Applications

<b>Applications testées:</b> IF, WB, ELISA	<b>Contrôles positifs:</b>
<b>Spécificité de l'espèce:</b> canin, Humain, souris	<b>WB :</b> tissu cérébral de souris, cellules HeLa <b>IF :</b> cellules C2C12, cellules MDCK

## Informations générales

Gamma tubulin is a member of tubulin superfamily and is a key component required for microtubule nucleation and stabilization. It is concentrated at the pericentriolar material of centrosomes in interphase cells, predominantly on spindle poles in mitotic cells, while found in midbodies during cytokinesis. Overexpression of gamma tubulin has been found in various cancers including breast cancer and gliomas. This antibody can well label the centrosome structure.

## Stockage

**Stockage:**  
Stocker à -20°C. Stable pendant un an après l'expédition.  
**Tampon de stockage:**  
PBS avec azoture de sodium à 0,02 % et glycérol à 50 % pH 7,3  
L'aliquotage n'est pas nécessaire pour le stockage à -20C

**\*\*\* Les 20ul contiennent 0,1% de BSA.**

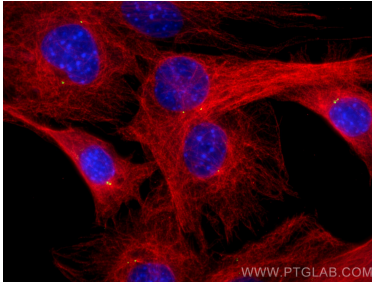
For technical support and original validation data for this product please contact:

T: 1 (888) 4PTGLAB (1-888-478-4522) (toll free in USA), or 1(312) 455-8498 (outside USA)

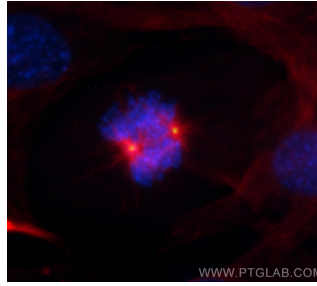
E: [proteintech@ptglab.com](mailto:proteintech@ptglab.com)  
W: [ptglab.com](http://ptglab.com)

**This product is exclusively available under Proteintech Group brand and is not available to purchase from any other manufacturer.**

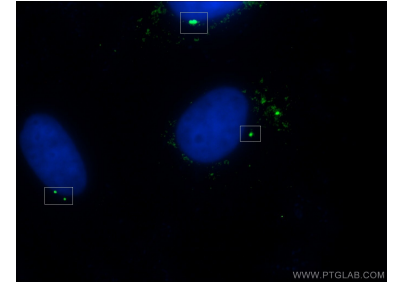
## Données de validation sélectionnées



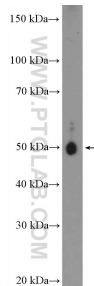
Immunofluorescent analysis of (4% PFA) fixed C2C12 cells using Gamma Tubulin antibody (26195-1-AP) at dilution of 1:500 and CoraLite®488-Conjugated AffiniPure Goat Anti-Rabbit IgG(H+L), Alpha Tubulin antibody (66031-1-Ig, Clone: 1E4C11, red).



Immunofluorescent analysis of (4% PFA) fixed C2C12 cells using Gamma Tubulin antibody (26195-1-AP) at dilution of 1:500 and CoraLite®488-Conjugated AffiniPure Goat Anti-Rabbit IgG(H+L), Alpha Tubulin antibody (66031-1-Ig, Clone: 1E4C11, red).



Immunofluorescent analysis of (-20°C Ethanol) fixed MDCK cells using 26195-1-AP (gamma tubulin antibody) at dilution of 1:50 and Alexa Fluor 488-conjugated AffiniPure Goat Anti-Rabbit IgG(H+L).



mouse brain tissue were subjected to SDS PAGE followed by western blot with 26195-1-AP (gamma tubulin antibody at dilution of 1:600 incubated at room temperature for 1.5 hours.