

À des fins de recherche uniquement

Anticorps Polyclonal de lapin anti-DRC1



Numéro de catalogue: 26219-1-AP

Informations de base

Numéro de catalogue: 26219-1-AP	Numéro d'acquisition GenBank: BC009488	Méthode de purification: Purification par affinité contre l'antigène
Taille: 150ul , Concentration: 600 µg/ml by Nanodrop;	Identification du gène (NCBI): 92749	Dilutions recommandées: WB 1:1000-1:6000 IF 1:50-1:500
Hôte: Lapin	Nom complet: chromosome 2 open reading frame 39	
Isotype: IgG	MW observés: 87 kDa	
Immunogen Catalog Number: AG24113		

Applications

Applications testées: IF, WB, ELISA	Contrôles positifs:
Spécificité de l'espèce: Humain, rat, souris	WB : tissu testiculaire de rat, IF : tissu testiculaire de souris,

Informations générales

DRC1, also known as C2orf39, CCDC164, has 3 coiled-coil motifs in its N-terminal half and an additional coiled-coil motif near its C terminus. DRC1 is a subunit of the nexin-dynein regulatory complex, an axonemal structure critical for the regulation of ciliary dynein motors. DRC1 is predominantly expressed in the lung, brain, and prostate (PMID: 23354437). DRC1 deficiency disrupts the assembly of the nexin-dynein regulatory complex, causing ciliary dyskinesia (PMID: 23354437, 34815526).

Stockage

Stockage:
Stocker à -20°C. Stable pendant un an après l'expédition.
Tampon de stockage:
PBS avec azoture de sodium à 0,02 % et glycérol à 50 % pH 7,3
L'aliquotage n'est pas nécessaire pour le stockage à -20C

***** Les 20ul contiennent 0,1% de BSA.**

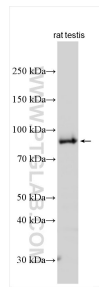
For technical support and original validation data for this product please contact:

T: 1 (888) 4PTGLAB (1-888-478-4522) (toll free in USA), or 1(312) 455-8498 (outside USA)

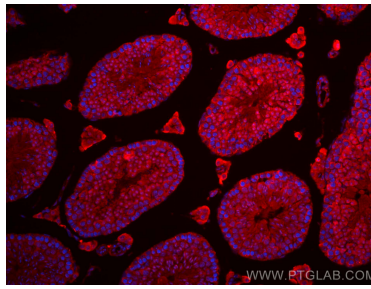
E: proteintech@ptglab.com
W: ptglab.com

This product is exclusively available under Proteintech Group brand and is not available to purchase from any other manufacturer.

Données de validation sélectionnées



rat testis tissue were subjected to SDS PAGE followed by western blot with 26219-1-AP (DRC1 antibody) at dilution of 1:3000 incubated at room temperature for 1.5 hours.



Immunofluorescent analysis of (4% PFA) fixed mouse testis tissue using DRC1 antibody (26219-1-AP) at dilution of 1:200 and CoraLite® 594-Conjugated AffiniPure Goat Anti-Rabbit IgG(H+L).