

À des fins de recherche uniquement

Anticorps Polyclonal de lapin anti-ZC3H15



Numéro de catalogue: 26241-1-AP **Phare**

Informations de base

Numéro de catalogue:
26241-1-AP

Taille:
150ul, Concentration: 350 µg/ml by
Nanodrop and 200 µg/ml by Bradford
method using BSA as the standard;

Hôte:
Lapin

Isotype:
IgG

Immunogen Catalog Number:
AG24091

Numéro d'acquisition GenBank:
BC021102

Identification du gène (NCBI):
55854

Nom complet:
zinc finger CCCH-type containing 15

MW observés:
50-55 kDa

Méthode de purification:
Purification par affinité contre
l'antigène

Dilutions recommandées:
WB 1:500-1:2000
IF 1:200-1:800

Applications

Applications testées:
IF, WB, ELISA

Spécificité de l'espèce:
Humain

Contrôles positifs:

WB : cellules HeLa, cellules HL-60, cellules K-562

IF : cellules U2OS, cellules HeLa

Informations générales

Stockage

Stockage:

Stocker à -20°C. Stable pendant un an après l'expédition.

Tampon de stockage:

PBS avec azoture de sodium à 0,02 % et glycérol à 50 % pH 7,3

L'aliquotage n'est pas nécessaire pour le stockage à -20C

***** Les 20ul contiennent 0,1% de BSA.**

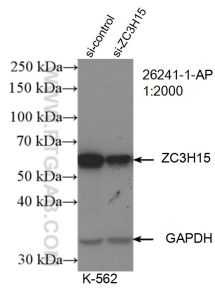
For technical support and original validation data for this product please contact:

T: 1 (888) 4PTGLAB (1-888-478-4522) (toll free
in USA), or 1(312) 455-8498 (outside USA)

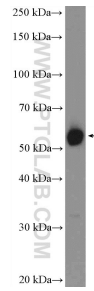
E: proteintech@ptglab.com
W: ptglab.com

This product is exclusively available under Proteintech Group brand and is not available to purchase from any other manufacturer.

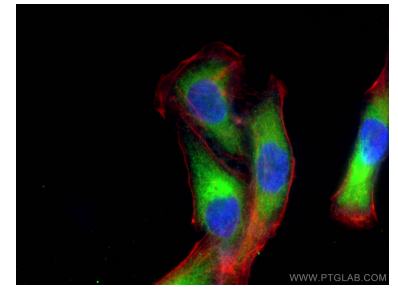
Données de validation sélectionnées



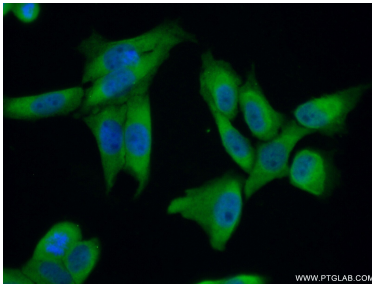
WB result of ZC3H15 antibody (26241-1-AP; 1:2000; incubated at room temperature for 1.5 hours) with sh-Control and sh-ZC3H15 transfected K-562 cells.



HeLa cells were subjected to SDS PAGE followed by western blot with 26241-1-AP (ZC3H15 Antibody) at dilution of 1:1000 incubated at room temperature for 1.5 hours.



Immunofluorescent analysis of (-20°C Ethanol) fixed U2OS cells using ZC3H15 antibody (26241-1-AP) at dilution of 1:400 and CoraLite@488-Conjugated AffiniPure Goat Anti-Rabbit IgG(H+L), CL594-Phalloidin (red).



Immunofluorescent analysis of (10% Formaldehyde) fixed HeLa cells using 26241-1-AP (ZC3H15 antibody) at dilution of 1:50 and Alexa Fluor 488-conjugated AffiniPure Goat Anti-Rabbit IgG(H+L).