

À des fins de recherche uniquement

Anticorps Polyclonal de lapin anti-C1orf187



Numéro de catalogue: 26342-1-AP

1 Publications

Informations de base

Numéro de catalogue:

26342-1-AP

Taille:

150ul, Concentration: 300 µg/ml by Nanodrop and 200 µg/ml by Bradford method using BSA as the standard;

Hôte:

Lapin

Isotype:

IgG

Immunogen Catalog Number:

AG23666

Numéro d'acquisition GenBank:

BC021286

Identification du gène (NCBI):

374946

Nom complet:

chromosome 1 open reading frame

187

MW observés:

32 kDa

Méthode de purification:

Purification par affinité contre l'antigène

Dilutions recommandées:

WB 1:500-1:2000

Applications

Applications testées:

WB, ELISA

Demandes citées:

WB

Spécificité de l'espèce:

Humain, souris

Espèces citées:

Humain

Contrôles positifs:

WB : tissu de cervelet de souris, cellules SH-SY5Y

Informations générales

C1orf187, also named Draxin (Dorsal repulsive axon guidance protein), is a repulsive axon guidance cue. It is widely expressed in the developing hippocampus, glioma, and all histological types of the lung cancer cell. Draxin was shown to bind a 22-amino-acid peptide of the EGF domain of Netrin-1, and through Draxin/Netrin-1 interaction, Draxin may act as a secreted Netrin-1 antagonist. C1orf187 can inhibit or repel neurite outgrowth from dorsal spinal cord. It inhibits the stabilization of cytosolic beta-catenin (CTNNB1) via its interaction with LRP6, thereby acting as an antagonist of Wnt signaling pathway (PMID: 29622850).

Publications notables

Autrice	Pubmed ID	Journal	Application
Jia-hao Bao	36045691	Front Immunol	WB

Stockage

Stockage:

Stocker à -20°C. Stable pendant un an après l'expédition.

Tampon de stockage:

PBS avec azoture de sodium à 0,02 % et glycérol à 50 % pH 7,3

L'aliquotage n'est pas nécessaire pour le stockage à -20C

*** Les 20ul contiennent 0,1% de BSA.

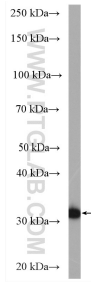
For technical support and original validation data for this product please contact:

T: 1 (888) 4PTGLAB (1-888-478-4522) (toll free in USA), or 1(312) 455-8498 (outside USA)

E: proteintech@ptglab.com
W: ptglab.com

This product is exclusively available under Proteintech Group brand and is not available to purchase from any other manufacturer.

Données de validation sélectionnées



mouse cerebellum tissue were subjected to SDS PAGE followed by western blot with 26342-1-AP (C1orf187 antibody) at dilution of 1:1000 incubated at room temperature for 1.5 hours.