

À des fins de recherche uniquement

# Anticorps Polyclonal de lapin anti-VEGFA



Numéro de catalogue: 26381-1-AP

4 Publications

## Informations de base

<b>Numéro de catalogue:</b> 26381-1-AP	<b>Numéro d'acquisition GenBank:</b> BC065522	<b>Méthode de purification:</b> Purification par affinité contre l'antigène
<b>Taille:</b> 150ul, Concentration: 400 µg/ml by Nanodrop and 233 µg/ml by Bradford method using BSA as the standard;	<b>Identification du gène (NCBI):</b> 7422	<b>Dilutions recommandées:</b> WB 1:500-1:3000 IHC 1:50-1:500
<b>Hôte:</b> Lapin	<b>Nom complet:</b> vascular endothelial growth factor A	
<b>Isotype:</b> IgG	<b>MW calculé:</b> 412 aa, 46 kDa	
<b>Immunogen Catalog Number:</b> AG24740	<b>MW observés:</b> 45 kDa	

## Applications

### Applications testées:

FC, IHC, WB, ELISA

### Demandes citées:

CoIP, IHC, WB

### Spécificité de l'espèce:

Humain

### Espèces citées:

Humain

**Remarque-IHC: il est suggéré de démasquer l'antigène avec un tampon de TE buffer pH 9,0; (\*) A défaut, le démasquage de l'antigène peut être effectué avec un tampon citrate pH 6,0.**

### Contrôles positifs:

WB : cellules HEK-293T, cellules HeLa, cellules Jurkat

IHC : tissu de cancer du foie humain, tissu rénal humain

## Informations générales

VEGFA, also named as VEGF or VPF, belongs to the PDGF/VEGF growth factor family. It is a growth factor active in angiogenesis, vasculogenesis and endothelial cell growth. VEGFA induces endothelial cell proliferation, promotes cell migration, inhibits apoptosis and induces permeabilization of blood vessels. It binds to the FLT1/VEGFR1 and KDR/VEGFR2 receptors, heparan sulfate and heparin. Defects in VEGFA are associated with microvascular complications of diabetes type 1 (MVC1). VEGFA has 17 isoforms with MW from 16 to 45 kDa. Some isoforms have homodimer forms (e.g.; VEGFA189 38 kDa or VEGFA110 34 kDa). VEGF-A exists in at least seven homodimeric isoforms. The monomers consist of 121, 145, 148, 165, 183, 189, or 206 amino acids (PMID:15602010).

## Publications notables

Autrice	Pubmed ID	Journal	Application
Corry D Bondi	36139884	Antioxidants (Basel)	WB
Longyang Jin	34226531	Cell Death Discov	WB
Yu Miao	34434285	Oncol Lett	WB,IHC

## Stockage

### Stockage:

Stocker à -20°C. Stable pendant un an après l'expédition.

### Tampon de stockage:

PBS avec azoture de sodium à 0,02 % et glycérol à 50 % pH 7,3

L'aliquote n'est pas nécessaire pour le stockage à -20C

\*\*\* Les 20ul contiennent 0,1% de BSA.

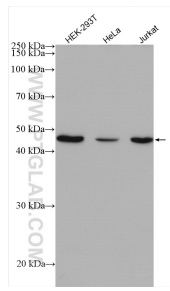
For technical support and original validation data for this product please contact:

T: 1 (888) 4PTGLAB (1-888-478-4522) (toll free in USA), or 1(312) 455-8498 (outside USA)

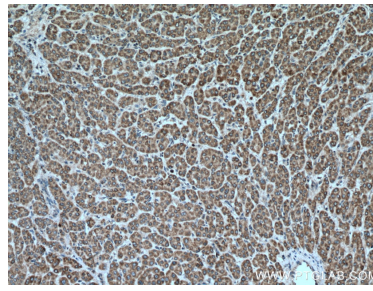
E: proteintech@ptglab.com  
W: ptglab.com

This product is exclusively available under Proteintech Group brand and is not available to purchase from any other manufacturer.

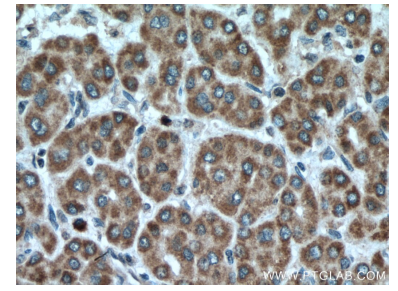
## Données de validation sélectionnées



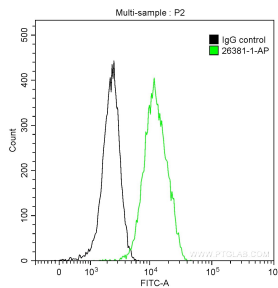
Various lysates were subjected to SDS PAGE followed by western blot with 26381-1-AP (VEGFA antibody) at dilution of 1:1500 incubated at room temperature for 1.5 hours.



Immunohistochemical analysis of paraffin-embedded human liver cancer tissue slide using 26381-1-AP (VEGFA antibody) at dilution of 1:200 (under 10x lens). Heat mediated antigen retrieval with Tris-EDTA buffer (pH 9.0).



Immunohistochemical analysis of paraffin-embedded human liver cancer tissue slide using 26381-1-AP (VEGFA antibody) at dilution of 1:200 (under 40x lens). Heat mediated antigen retrieval with Tris-EDTA buffer (pH 9.0).



1X10<sup>6</sup> NIH/3T3 cells were intracellularly stained with 0.2 ug Anti-Human VEGFA (26381-1-AP) and CoraLite@488-Conjugated AffiniPure Goat Anti-Rabbit IgG(H+L) at dilution 1:1000 (green), and 0.2 ug Control Antibody. Cells were fixed with 90% MeOH.