

À des fins de recherche uniquement

Anticorps Polyclonal de lapin anti-VEGFR2



Numéro de catalogue: 26415-1-AP

Phare

77 Publications

Informations de base

Numéro de catalogue: 26415-1-AP	Numéro d'acquisition GenBank: BC131822	Méthode de purification: Purification par affinité contre l'antigène
Taille: 150ul , Concentration: 650 µg/ml by Nanodrop;	Identification du gène (NCBI): 3791	Dilutions recommandées: WB 1:1000-1:8000
Hôte: Lapin	Nom complet: kinase insert domain receptor (a type III receptor tyrosine kinase)	
Isotype: IgG	MW calculé 1356 aa, 152 kDa	
Immunogen Catalog Number: AG24589	MW observés: 200 kDa	

Applications

Applications testées:

FC, WB, ELISA

Demandes citées:

CoIP, FC, IF, IHC, IP, WB

Spécificité de l'espèce:

Humain, rat, souris

Espèces citées:

Humain, porc, rat, souris

Contrôles positifs:

WB : tissu placentaire humain, tissu cardiaque de souris, tissu placentaire de souris, tissu pulmonaire de rat, tissu pulmonaire de souris

Informations générales

KDR, also named as VEGFR-2, FLK1 and CD309, is a receptor for VEGF or VEGFC. KDR which belongs to the protein kinase superfamily, has a tyrosine-protein kinase activity. The VEGF-kinase ligand/receptor signaling system plays a key role in vascular development and regulation of vascular permeability. In case of HIV-1 infection, the interaction with extracellular viral Tat protein seems to enhance angiogenesis in Kaposi's sarcoma lesions. KDR functions as the main mediator of VEGF-induced endothelial proliferation, survival, migration, tubular morphogenesis and sprouting. Mutations of this gene are implicated in infantile capillary hemangiomas.

Publications notables

Autrice	Pubmed ID	Journal	Application
Xiao-Qin Zhu	33456987	J Gastrointest Oncol	IHC
Qiang Ma	31562866	Eur J Pharmacol	WB
Yongyun Li	34536440	J Mol Cell Cardiol	IF

Stockage

Stockage:

Stocker à -20°C. Stable pendant un an après l'expédition.

Tampon de stockage:

PBS avec azoture de sodium à 0,02 % et glycérol à 50 % pH 7,3

L'aliquotage n'est pas nécessaire pour le stockage à -20C

*** Les 20ul contiennent 0,1% de BSA.

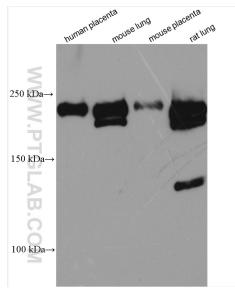
For technical support and original validation data for this product please contact:

T: 1 (888) 4PTGLAB (1-888-478-4522) (toll free in USA), or 1(312) 455-8498 (outside USA)

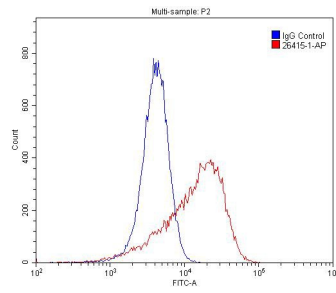
E: proteintech@ptglab.com
W: ptglab.com

This product is exclusively available under Proteintech Group brand and is not available to purchase from any other manufacturer.

Données de validation sélectionnées



Various lysates were subjected to SDS PAGE followed by western blot with 26415-1-AP (VEGFR2 antibody) at dilution of 1:4000 incubated at room temperature for 1.5 hours.



1X10⁶ HUVEC cells were stained with 0.2ug VEGF Receptor 2 antibody (26415-1-AP, red) and control antibody (blue). Fixed with 4% PFA blocked with 3% BSA (30 min). Alexa Fluor 488-conjugated AffiniPure Goat Anti-Rabbit IgG(H+L) with dilution 1:1500.