

À des fins de recherche uniquement

# Anticorps Polyclonal de lapin anti-LHCGR



Numéro de catalogue: 26424-1-AP

Phare

1 Publications

## Informations de base

Numéro de catalogue:

26424-1-AP

Taille:

150ul, Concentration: 600 µg/ml by Nanodrop and 333 µg/ml by Bradford method using BSA as the standard;

Hôte:

Lapin

Isotype:

IgG

Immunogen Catalog Number:

AG19259

Numéro d'acquisition GenBank:

BC157028

Identification du gène (NCBI):

3973

Nom complet:

LHCGR

MW calculé

699 aa, 79 kDa

MW observés:

100 kDa

Méthode de purification:

Purification par affinité contre l'antigène

Dilutions recommandées:

WB 1:500-1:2000

IHC 1:50-1:500

IF 1:50-1:500

## Applications

Applications testées:

FC, IF, IHC, WB, ELISA

Demandes citées:

IF, WB

Spécificité de l'espèce:

Humain, souris

Espèces citées:

souris

**Remarque-IHC: il est suggéré de démasquer l'antigène avec un tampon de TE buffer pH 9,0; (\*) A défaut, le démasquage de l'antigène peut être effectué avec un tampon citrate pH 6,0.**

Contrôles positifs:

WB : tissu ovarien de souris,

IHC : tissu de cancer de la thyroïde humaine, tissu ovarien de souris, tissu ovarien humain

IF : tissu ovarien de souris,

## Informations générales

LHCGR, also known as LHR or LSHR, belongs to the rhodopsin-like family of G protein-coupled receptors (GPCRs) and plays a crucial role in the regulation of gonadal functions by stimulating steroidogenesis in response to luteinizing hormone (LH) or hCG (PMID: 15866423). Mutations in LHCGR gene result in familial male-limited precocious puberty, Leydig cell hypoplasia, and empty follicle syndrome (PMID: 30711030). LHCGR protein consists of 699 amino acids with a calculated molecular weight of 79 kDa. Due to massive glycosylation, the molecular mass of the mature LHCGR is higher (85-100 kDa) than the predicted molecular protein mass of 79 kDa (PMID: 23686864; 15866423; 29075189; 15969756).

## Publications notables

Autrice	Pubmed ID	Journal	Application
Shi-Min Wang	35689841	Biochem Biophys Res Commun	WB,IF

## Stockage

Stockage:

Stocker à -20°C. Stable pendant un an après l'expédition.

Tampon de stockage:

PBS avec azote de sodium à 0,02 % et glycérol à 50 % pH 7,3

L'aliquotage n'est pas nécessaire pour le stockage à -20C

\*\*\* Les 20ul contiennent 0,1% de BSA.

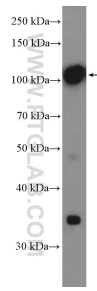
For technical support and original validation data for this product please contact:

T: 1 (888) 4PTGLAB (1-888-478-4522) (toll free in USA), or 1(312) 455-8498 (outside USA)

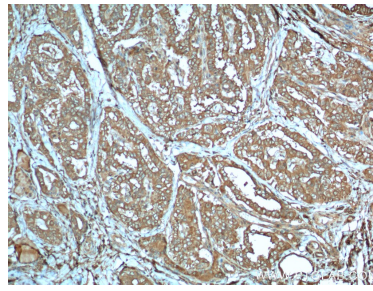
E: proteintech@ptglab.com  
W: ptglab.com

This product is exclusively available under Proteintech Group brand and is not available to purchase from any other manufacturer.

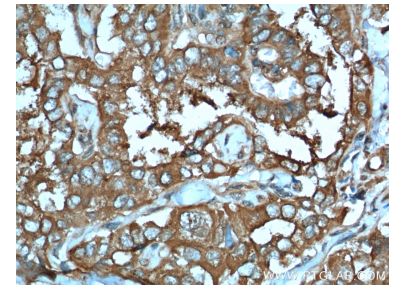
## Données de validation sélectionnées



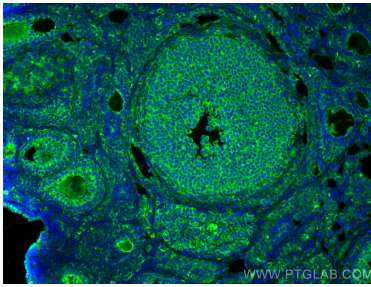
mouse ovary tissue were subjected to SDS PAGE followed by western blot with 26424-1-AP (LHCGR Antibody) at dilution of 1:1000 incubated at room temperature for 1.5 hours.



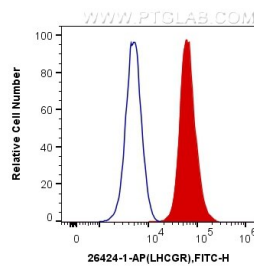
Immunohistochemical analysis of paraffin-embedded human thyroid cancer tissue slide using 26424-1-AP (LHCGR Antibody) at dilution of 1:100 (under 10x lens). Heat mediated antigen retrieval with Tris-EDTA buffer (pH 9.0).



Immunohistochemical analysis of paraffin-embedded human thyroid cancer tissue slide using 26424-1-AP (LHCGR Antibody) at dilution of 1:100 (under 40x lens). Heat mediated antigen retrieval with Tris-EDTA buffer (pH 9.0).



Immunofluorescent analysis of (4% PFA) fixed mouse ovary tissue using LHCGR antibody (26424-1-AP) at dilution of 1:200 and CoraLite®488-Conjugated AffiniPure Goat Anti-Rabbit IgG(H+L).



1x10<sup>6</sup> Jurkat cells were intracellularly stained with 0.4 ug Anti-Human LHCGR (26424-1-AP) and CoraLite®488-Conjugated AffiniPure Goat Anti-Rabbit IgG(H+L) at dilution 1:1000 (red), or 0.4 ug x. Cells were fixed with 4% PFA and permeabilized with Flow Cytometry Perm Buffer (PF00011-C).