

À des fins de recherche uniquement

Anticorps Polyclonal de lapin anti-GMAP-210



Numéro de catalogue: 26456-1-AP

Phare

4 Publications

Informations de base

Numéro de catalogue: 26456-1-AP	Numéro d'acquisition GenBank: BC002656	Méthode de purification: Purification par affinité contre l'antigène
Taille: 150ul, Concentration: 700 µg/ml by Nanodrop and 367 µg/ml by Bradford method using BSA as the standard;	Identification du gène (NCBI): 9321	Dilutions recommandées: WB 1:500-1:1000 IF 1:50-1:500
Hôte: Lapin	Nom complet: thyroid hormone receptor interactor 11	
Isotype: IgG	MW calculé: 1979 aa, 228 kDa	
Immunogen Catalog Number: AG13867	MW observés: 230 kDa	

Applications

Applications testées: IF, WB, ELISA	Contrôles positifs: WB : cellules HeLa, cellules HL-60 IF : cellules HeLa,
Demandes citées: IF, WB	
Spécificité de l'espèce: Humain	
Espèces citées: Humain	

Informations générales

Golgi microtubule-associated protein 210 (GMAP-210), also referred to as CEV14, Trip11 or Trip230, is a peripheral Golgi protein that localizes to the cis-Golgi network. GMAP-210 is a 1,978 amino acid coiled-coil member of the golgin family of proteins. Microtubule ends bind to GMAP-210 which functions to link the cis-Golgi network to the minus ends of centrosome-nucleated microtubules. This interaction may be essential for the proper morphology and structural maintenance of the Golgi apparatus. GMAP-210 also associates with thyroid hormone receptor. Overexpression of GMAP-210 disrupts the micro-tubule network and causes a significant enlargement and fragmentation of the Golgi apparatus; it also blocks anterograde and retrograde transport between the ER and the Golgi apparatus.

Publications notables

Autrice	Pubmed ID	Journal	Application
Jennifer Y Liu	34533192	Biol Open	WB
Priyanka Upadhyai	34057271	Hum Mutat	WB,IF
Antoine Reynaud	35714773	J Biol Chem	IF

Stockage

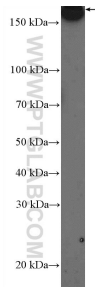
Stockage:
Stocker à -20°C. Stable pendant un an après l'expédition.
Tampon de stockage:
PBS avec azoture de sodium à 0,02 % et glycérol à 50 % pH 7,3
L'aliquotage n'est pas nécessaire pour le stockage à -20C

*** Les 20ul contiennent 0,1% de BSA.

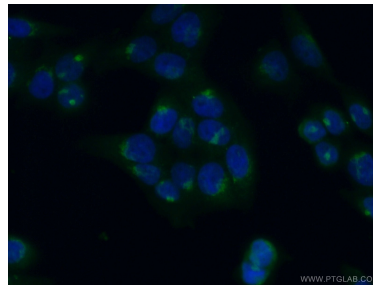
For technical support and original validation data for this product please contact:
T: 1 (888) 4PTGLAB (1-888-478-4522) (toll free in USA), or 1(312) 455-8498 (outside USA)
E: proteintech@ptglab.com
W: ptglab.com

This product is exclusively available under Proteintech Group brand and is not available to purchase from any other manufacturer.

Données de validation sélectionnées



HeLa cells were subjected to SDS PAGE followed by western blot with 26456-1-AP (GMAP-210 Antibody) at dilution of 1:600 incubated at room temperature for 1.5 hours.



Immunofluorescent analysis of (4% PFA) fixed HeLa cells using 26456-1-AP (GMAP-210 antibody) at dilution of 1:50 and Alexa Fluor 488-conjugated AffiniPure Goat Anti-Rabbit IgG(H+L).