

À des fins de recherche uniquement

# Anticorps Polyclonal de lapin anti-Ch-TOG



Numéro de catalogue: 26457-1-AP

1 Publications

## Informations de base

Numéro de catalogue:  
26457-1-AP

Taille:  
150ul, Concentration: 700 µg/ml by Nanodrop and 247 µg/ml by Bradford method using BSA as the standard;

Hôte:  
Lapin

Isotype:  
IgG

Immunogen Catalog Number:  
AG24875

Numéro d'acquisition GenBank:  
BC120869

Identification du gène (NCBI):  
9793

Nom complet:  
cytoskeleton associated protein 5

MW observés:  
220 kDa

Méthode de purification:  
Purification par affinité contre l'antigène

Dilutions recommandées:  
WB 1:1000-1:6000  
IF 1:50-1:500

## Applications

Applications testées:  
IF, WB, ELISA

Spécificité de l'espèce:  
Humain

Contrôles positifs:

WB : cellules HeLa, cellules HepG2, cellules MCF-7, cellules NCCIT

IF : cellules HeLa,

## Informations générales

Ch-TOG (colonic hepatic tumor-overexpressed gene), also known as XMAP215 or CKAP5, is a microtubule polymerase which can promotes cytoplasmic microtubule nucleation and elongation. Through interacting with Aurora-A and TACC3, it plays a major role in organizing spindle poles.

## Publications notables

Autrice	Pubmed ID	Journal	Application
Angela Flavia Serpico	35081344	Cell Rep	

## Stockage

Stockage:

Stocker à -20°C. Stable pendant un an après l'expédition.

Tampon de stockage:

PBS avec azoture de sodium à 0,02 % et glycérol à 50 % pH 7,3

L'aliquotage n'est pas nécessaire pour le stockage à -20C

\*\*\* Les 20ul contiennent 0,1% de BSA.

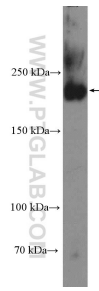
For technical support and original validation data for this product please contact:

T: 1 (888) 4PTGLAB (1-888-478-4522) (toll free in USA), or 1(312) 455-8498 (outside USA)

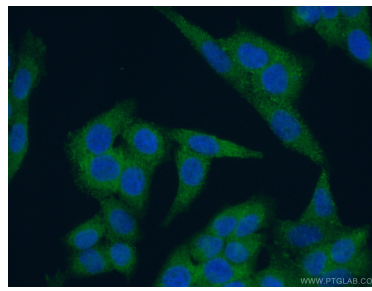
E: proteintech@ptglab.com  
W: ptglab.com

This product is exclusively available under Proteintech Group brand and is not available to purchase from any other manufacturer.

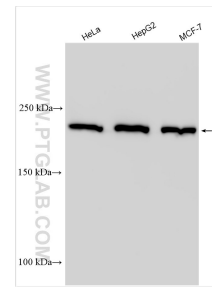
## Données de validation sélectionnées



NCCIT cell were subjected to SDS PAGE followed by western blot with 26457-1-AP (Ch-TOG antibody) at dilution of 1:1000 incubated at room temperature for 1.5 hours.



Immunofluorescent analysis of (4% PFA) fixed HeLa cells using 26457-1-AP (Ch-TOG antibody) at dilution of 1:50 and Alexa Fluor 488-conjugated AffiniPure Goat Anti-Rabbit IgG(H+L).



Various lysates were subjected to SDS PAGE followed by western blot with 26457-1-AP (Ch-TOG antibody) at dilution of 1:3000 incubated at room temperature for 1.5 hours.