

À des fins de recherche uniquement

Anticorps Polyclonal de lapin anti-DEPDC7



Numéro de catalogue: 26517-1-AP

Informations de base

Numéro de catalogue: 26517-1-AP	Numéro d'acquisition GenBank: BC030970	Méthode de purification: Purification par affinité contre l'antigène
Taille: 150ul , Concentration: 700 µg/ml by Nanodrop and 427 µg/ml by Bradford method using BSA as the standard;	Identification du gène (NCBI): 91614	Dilutions recommandées: WB 1:500-1:2000 IF 1:50-1:500
Hôte: Lapin	Nom complet: DEP domain containing 7	
Isotype: IgG	MW observés: 55-60 kDa	
Immunogen Catalog Number: AG24094		

Applications

Applications testées: IF, WB, ELISA	Contrôles positifs: WB : cellules HepG2, cellules HeLa IF : cellules HepG2,
Spécificité de l'espèce: Humain	

Informations générales

DEPDC7 (DEP domain-containing protein 7), also known as protein TR2/D15, is a 511 amino acid protein belonging to the DEPDC7 family. DEPDC7 contains one DEP domain and is highly expressed in liver, with lower levels in kidney. DEPDC7 exists as two isoforms produced by alternative splicing events. The gene encoding DEPDC7 maps to human chromosome 11p13 and mouse chromosome 2 E2. With approximately 135 million base pairs and 1,400 genes, chromosome 11 makes up around 4% of human genomic DNA and is considered a gene and disease association dense chromosome. DEPDC7 involves the regulation of small GTPase mediated signal transduction.

Stockage

Stockage:
Stocker à -20°C. Stable pendant un an après l'expédition.
Tampon de stockage:
PBS avec azoture de sodium à 0,02 % et glycérol à 50 % pH 7,3
L'aliquotage n'est pas nécessaire pour le stockage à -20C

*** Les 20ul contiennent 0,1% de BSA.

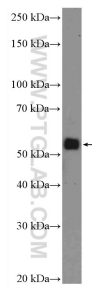
For technical support and original validation data for this product please contact:

T: 1 (888) 4PTGLAB (1-888-478-4522) (toll free in USA), or 1(312) 455-8498 (outside USA)

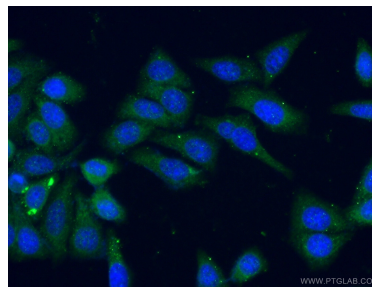
E: proteintech@ptglab.com
W: ptglab.com

This product is exclusively available under Proteintech Group brand and is not available to purchase from any other manufacturer.

Données de validation sélectionnées



HepG2 cells were subjected to SDS PAGE followed by western blot with 26517-1-AP (DEPDC7 Antibody) at dilution of 1:1000 incubated at room temperature for 1.5 hours.



Immunofluorescent analysis of (-20°C Ethanol) fixed HepG2 cells using 26517-1-AP (DEPDC7 antibody) at dilution of 1:50 and Alexa Fluor 488-conjugated AffiniPure Goat Anti-Rabbit IgG(H+L).