

À des fins de recherche uniquement

# Anticorps Polyclonal de lapin anti-Vinculin



Numéro de catalogue: 26520-1-AP

50 Publications

## Informations de base

Numéro de catalogue: 26520-1-AP	Numéro d'acquisition GenBank: BC039174	Méthode de purification: Purification par affinité contre l'antigène
Taille: 150ul, Concentration: 750 µg/ml by Nanodrop;	Identification du gène (NCBI): 7414	Dilutions recommandées: WB 1:5000-1:50000 IHC 1:50-1:500 IF 1:300-1:1200
Hôte: Lapin	Nom complet: vinculin	
Isotype: IgG	MW calculé: 1133 aa, 124 kDa	
Immunogen Catalog Number: AG24942	MW observés: 117 kDa	

## Applications

### Applications testées:

FC, IF, IHC, WB, ELISA

### Demandes citées:

IF, WB

### Spécificité de l'espèce:

canin, Humain, rat, souris

### Espèces citées:

Humain, Lapin, porc, rat, souris

**Remarque-IHC: il est suggéré de démasquer l'antigène avec un tampon de TE buffer pH 9,0; (\*) À défaut, 'le démasquage de l'antigène peut être effectué avec un tampon citrate pH 6,0.**

### Contrôles positifs:

WB : cellules HEK-293T, cellules HeLa, cellules HepG2, cellules MDCK, cellules MG U-87, cellules NIH/3T3, cellules PC-12, tissu cardiaque de rat, tissu cardiaque de souris

IHC : tissu de muscle squelettique humain, tissu de cancer de la prostate humain, tissu de cancer du sein humain

IF : cellules HepG2,

## Informations générales

Vinculin belongs to the vinculin/alpha-catenin family. It is an actin filament (F-actin)-binding protein which involved in cell-matrix adhesion and cell-cell adhesion. Vinculin regulates cell-surface E-cadherin expression and potentiates mechanosensing by the E-cadherin complex. It may also play important roles in cell morphology and locomotion. Vinculin is a 117-kDa, 1,066-amino-acid protein which is ubiquitously expressed. Its splice variant, metavinculin (124 kDa), is muscle-specific.

## Publications notables

Autrice	Pubmed ID	Journal	Application
Lan Zhang	34586738	Clin Transl Med	WB
Zhixiong Chen	30178500	Prostate	WB
Jingxuan Chen	36316321	Cell Death Discov	WB,IF

## Stockage

### Stockage:

Stocker à -20°C. Stable pendant un an après l'expédition.

### Tampon de stockage:

PBS avec azoture de sodium à 0,02 % et glycérol à 50 % pH 7,3

L'aliquotage n'est pas nécessaire pour le stockage à -20C

\*\*\* Les 20ul contiennent 0,1% de BSA.

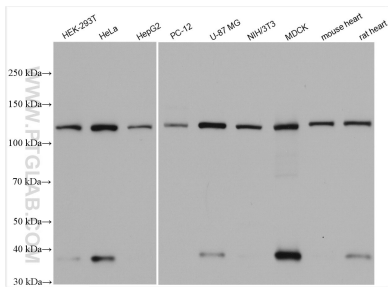
For technical support and original validation data for this product please contact:

T: 1 (888) 4PTGLAB (1-888-478-4522) (toll free in USA), or 1(312) 455-8498 (outside USA)

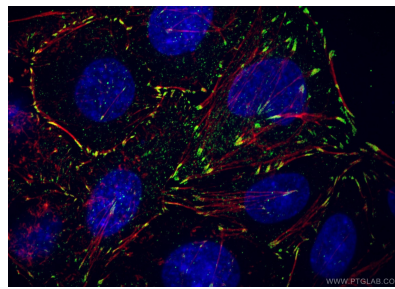
E: [proteintech@ptglab.com](mailto:proteintech@ptglab.com)  
W: [ptglab.com](http://ptglab.com)

This product is exclusively available under Proteintech Group brand and is not available to purchase from any other manufacturer.

## Données de validation sélectionnées



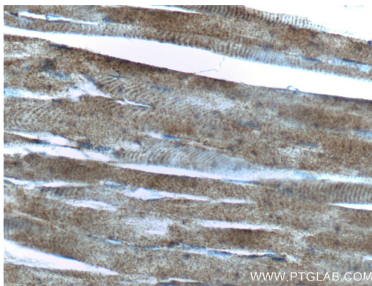
Various lysates were subjected to SDS PAGE followed by western blot with 26520-1-AP (Vinculin antibody) at dilution of 1:30000 incubated at room temperature for 1.5 hours.



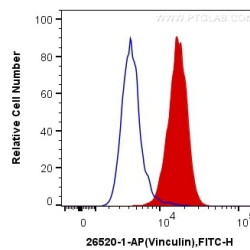
Immunofluorescent analysis of (4% PFA) fixed HepG2 cells using 26520-1-AP (Vinculin antibody) at dilution of 1:600 and CoraLite488-Conjugated AffiniPure Goat Anti-Rabbit IgG(H+L), CL555-phalloidine stains F-actin (red).



Immunohistochemical analysis of paraffin-embedded human skeletal muscle tissue slide using 26520-1-AP (Vinculin Antibody) at dilution of 1:200 (under 10x lens).



Immunohistochemical analysis of paraffin-embedded human skeletal muscle tissue slide using 26520-1-AP (Vinculin Antibody) at dilution of 1:200 (under 40x lens).



1X10<sup>6</sup> HepG2 cells were intracellularly stained with 0.2 ug Anti-Human Vinculin (26520-1-AP) and CoraLite<sup>®</sup>488-Conjugated AffiniPure Goat Anti-Rabbit IgG(H+L) at dilution 1:1000 (red), or 0.2 ug Control Antibody. Cells were fixed with 4% PFA and permeabilized with Flow Cytometry Perm Buffer (PF00011-C).