

À des fins de recherche uniquement

Anticorps Polyclonal de lapin anti-PPM1D



Numéro de catalogue: 26532-1-AP

Informations de base

Numéro de catalogue:

26532-1-AP

Taille:

150ul, Concentration: 350 µg/ml by Nanodrop and 267 µg/ml by Bradford method using BSA as the standard;

Hôte:

Lapin

Isotype:

IgG

Immunogen Catalog Number:

AG24751

Numéro d'acquisition GenBank:

BC060877

Identification du gène (NCBI):

8493

Nom complet:

protein phosphatase 1D magnesium-dependent, delta isoform

MW observés:

67 kDa

Méthode de purification:

Purification par affinité contre l'antigène

Dilutions recommandées:

WB 1:500-1:2000

IF 1:50-1:500

Applications

Applications testées:

IF, WB, ELISA

Spécificité de l'espèce:

Humain, rat, souris

Contrôles positifs:

WB : cellules MCF-7, tissu pulmonaire de souris, tissu testiculaire de rat

IF : cellules MCF-7,

Informations générales

PPM1D (also known as PP2Cd and WIP1) is a member of the PPM family, which is characterized by Mg²⁺/Mn²⁺-dependent activity and relative insensitivity to okadaic acid. The PPM1D gene is aberrantly amplified in a range of common cancers and encodes a protein phosphatase that is a potential therapeutic target (PMID: 17700519). This antibody can be detected two bands of 47 and 67 Kda.

Stockage

Stockage:

Stocker à -20°C. Stable pendant un an après l'expédition.

Tampon de stockage:

PBS avec azoture de sodium à 0,02 % et glycérol à 50 % pH 7,3

L'aliquotage n'est pas nécessaire pour le stockage à -20C

*** Les 20ul contiennent 0,1% de BSA.

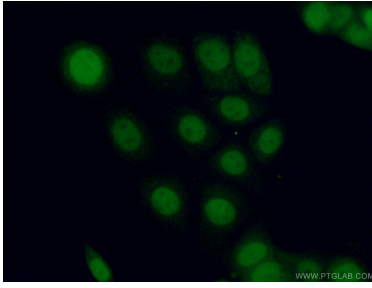
For technical support and original validation data for this product please contact:

T: 1 (888) 4PTGLAB (1-888-478-4522) (toll free in USA), or 1(312) 455-8498 (outside USA)

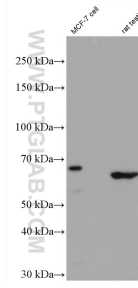
E: proteintech@ptglab.com
W: ptglab.com

This product is exclusively available under Proteintech Group brand and is not available to purchase from any other manufacturer.

Données de validation sélectionnées



Immunofluorescent analysis of (4% PFA) fixed MCF-7 cells using 26532-1-AP (PPM1D antibody) at dilution of 1:50 and Alexa Fluor 488-conjugated AffiniPure Goat Anti-Rabbit IgG(H+L).



MCF-7 cells were subjected to SDS PAGE followed by western blot with 26532-1-AP (PPM1D antibody) at dilution of 1:1500 incubated at room temperature for 1.5 hours.