

À des fins de recherche uniquement

Anticorps Polyclonal de lapin anti-LIG3



Numéro de catalogue: 26583-1-AP

3 Publications

Informations de base

Numéro de catalogue:

26583-1-AP

Taille:

150ul, Concentration: 900 µg/ml by Nanodrop and 500 µg/ml by Bradford method using BSA as the standard;

Hôte:

Lapin

Isotype:

IgG

Immunogen Catalog Number:

AG24998

Numéro d'acquisition GenBank:

BC068005

Identification du gène (NCBI):

3980

Nom complet:

ligase III, DNA, ATP-dependent

MW calculé

100-110 kDa

MW observés:

100 kDa

Méthode de purification:

Purification par affinité contre l'antigène

Dilutions recommandées:

WB 1:1000-1:8000

IP 0.5-4.0 ug for IP and 1:200-1:1000 for WB

IF 1:50-1:500

Applications

Applications testées:

IF, IP, WB, ELISA

Demandes citées:

IF, WB

Spécificité de l'espèce:

Humain, souris

Espèces citées:

Humain, porc

Contrôles positifs:

WB : cellules HEK-293T,

IP : cellules HEK-293T,

IF : cellules HeLa,

Informations générales

DNA ligase 3 is an enzyme that in humans is encoded by the LIG3 gene. The human LIG3 gene encodes ATP-dependent DNA ligases that seal interruptions in the phosphodiester backbone of duplex DNA. There are three families of ATP-dependent DNA ligases in eukaryotes. These enzymes utilize the same three step reaction mechanism; 1 formation of a covalent enzyme-adenylate intermediate; 2 transfer of the adenylate group to the 5' phosphate terminus of a DNA nick; 3 phosphodiester bond formation. Unlike LIG1 and LIG4 family members that are found in almost all eukaryotes, LIG3 family members are less widely distributed. The LIG3 gene encodes several distinct DNA ligase species by alternative translation initiation and alternative splicing mechanisms

Publications notables

| Autrice | Pubmed ID | Journal | Application |
|--------------|-----------|-------------------------|-------------|
| Guoling Li | 32534122 | Int J Biochem Cell Biol | WB |
| Elena Bonora | 33855352 | Brain | IF |
| Fu Yang | 37438532 | Nature | WB |

Stockage

Stockage:

Stocker à -20°C. Stable pendant un an après l'expédition.

Tampon de stockage:

PBS avec azoture de sodium à 0,02 % et glycérol à 50 % pH 7,3

L'aliquotage n'est pas nécessaire pour le stockage à -20C

*** Les 20ul contiennent 0,1% de BSA.

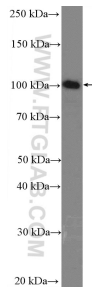
For technical support and original validation data for this product please contact:

T: 1 (888) 4PTGLAB (1-888-478-4522) (toll free in USA), or 1(312) 455-8498 (outside USA)

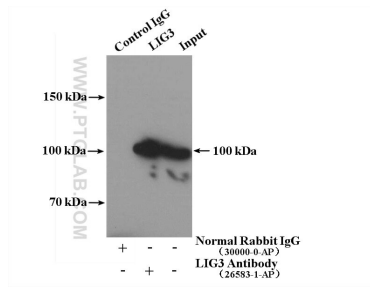
E: proteintech@ptglab.com
W: ptglab.com

This product is exclusively available under Proteintech Group brand and is not available to purchase from any other manufacturer.

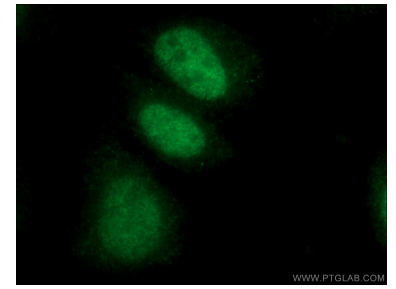
Données de validation sélectionnées



HEK-293T cells were subjected to SDS PAGE followed by western blot with 26583-1-AP (LIG3 Antibody) at dilution of 1:4000 incubated at room temperature for 1.5 hours.



IP Result of anti-LIG3 (IP:26583-1-AP, 4ug; Detection:26583-1-AP 1:300) with HEK-293T cells lysate 4000ug.



Immunofluorescent analysis of (10% Formaldehyde) fixed HeLa cells using 26583-1-AP (LIG3 antibody) at dilution of 1:50 and Alexa Fluor 488-conjugated AffiniPure Goat Anti-Rabbit IgG(H+L).