

À des fins de recherche uniquement

# Anticorps Polyclonal de lapin anti-SP3



Numéro de catalogue: 26584-1-AP

3 Publications

## Informations de base

Numéro de catalogue:

26584-1-AP

Taille:

150ul, Concentration: 750 µg/ml by Nanodrop and 387 µg/ml by Bradford method using BSA as the standard;

Hôte:

Lapin

Isotype:

IgG

Immunogen Catalog Number:

AG25082

Numéro d'acquisition GenBank:

BC126414

Identification du gène (NCBI):

6670

Nom complet:

Sp3 transcription factor

MW calculé

781 aa, 82 kDa

MW observés:

70 kDa, 115 kDa

Méthode de purification:

Purification par affinité contre l'antigène

Dilutions recommandées:

WB 1:500-1:1000

## Applications

Applications testées:

WB, ELISA

Demandes citées:

IHC, WB

Spécificité de l'espèce:

Humain, souris

Espèces citées:

Humain

Contrôles positifs:

WB: cellules PC-3, cellule C2C12, cellules COLO 320

## Informations générales

SP3, also named as transcription factor Sp3, is a 781 amino acid protein, which contains 3 C2H2-type zinc fingers and belongs to the Sp1 C2H2-type zinc-finger protein family. SP3 localizes to the nuclear periphery and in nuclear dots when sumoylated. Some localization in PML nuclear bodies. SP3 is acetylated by histone acetyltransferase p300, deacetylated by HDACs and sumoylated on all isoforms. Sumoylated on 2 sites in longer isoforms with Lys-551 being the major site. Sumoylation at this site promotes nuclear localization to the nuclear periphery, nuclear dots and PML nuclear bodies. Sumoylation on Lys-551 represses the transactivation activity, except for the largest isoform, L-Sp3, which has little effect on transactivation. Alternate sumoylation and acetylation at Lys-551 also control transcriptional activity. There exists two modified isoform and molecular weight of those are 70 kda and 115 kda.

## Publications notables

Autrice	Pubmed ID	Journal	Application
Shouhua Zhang	29260353	Dig Dis Sci	WB
Kexin Sun	36889558	Mol Cell Probes	WB, IHC
Weiyi Zhu	36745972	Biochem Biophys Res Commun	WB

## Stockage

Stockage:

Stocker à -20°C. Stable pendant un an après l'expédition.

Tampon de stockage:

PBS avec azote de sodium à 0,02 % et glycérol à 50 % pH 7,3

L'aliquotage n'est pas nécessaire pour le stockage à -20C

\*\*\* Les 20ul contiennent 0,1% de BSA.

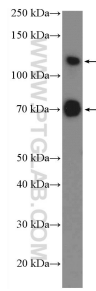
For technical support and original validation data for this product please contact:

T: 1 (888) 4PTGLAB (1-888-478-4522) (toll free in USA), or 1(312) 455-8498 (outside USA)

E: [proteintech@ptglab.com](mailto:proteintech@ptglab.com)  
W: [ptglab.com](http://ptglab.com)

This product is exclusively available under Proteintech Group brand and is not available to purchase from any other manufacturer.

## Données de validation sélectionnées



PC-3 cells were subjected to SDS PAGE followed by western blot with 26584-1-AP (SP3 Antibody) at dilution of 1:600 incubated at room temperature for 1.5 hours.