

À des fins de recherche uniquement

Anticorps Polyclonal de lapin anti-MMP1



Numéro de catalogue: 26585-1-AP

3 Publications

Informations de base

Numéro de catalogue:

26585-1-AP

Taille:

150ul, Concentration: 450 µg/ml by Nanodrop and 367 µg/ml by Bradford method using BSA as the standard;

Hôte:

Lapin

Isotype:

IgG

Immunogen Catalog Number:

AG25073

Numéro d'acquisition GenBank:

BC013875

Identification du gène (NCBI):

4312

Nom complet:

matrix metalloproteinase 1 (interstitial collagenase)

MW calculé

54 kDa

MW observés:

62 kDa

Méthode de purification:

Purification par affinité contre l'antigène

Dilutions recommandées:

WB 1:200-1:1000

IP 0.5-4.0 ug for IP and 1:200-1:1000 for WB

IHC 1:100-1:400

Applications

Applications testées:

IHC, IP, WB, ELISA

Demandes citées:

IHC, IP, WB

Spécificité de l'espèce:

Humain, souris

Espèces citées:

Humain, souris

Remarque-IHC: il est suggéré de démasquer l'antigène avec un tampon de TE buffer pH 9,0; (*) A défaut, 'le démasquage de l'antigène peut être 'effectué avec un tampon citrate pH 6,0.

Contrôles positifs:

WB : cellules A375, cellules NIH/3T3

IP : cellules Raji,

IHC : tissu de cancer du col de l'utérus humain, tissu de cancer du foie humain

Informations générales

MMP1, also named as CLG, belongs to the peptidase M10A family. MMP is the main enzyme that cleaves fibrillar collagen, namely types I, II, III, VII, and XI. It is involved in cell migration and invasion, and is frequently up-regulated in cancer cells. It can be cleavage to two major forms (22 kDa and 27 kDa) by undergoing autolytic, and the minor form (25 kDa) is the glycosylated form of the 22 kDa form. The 27 kDa form has no activity while the 22/25 kDa form can act as activator for collagenase. The sizes of pro-MMP-1 and active MMP-1 from human synovial fibroblasts have been reported as 52 to 56 kDa, depending on glycosylation, and 41 to 45 kDa, respectively. In addition, a band of 62-kDa observed in the current study is pro-MMP-1 (PMID:9418730).

Publications notables

Autrice	Pubmed ID	Journal	Application
Haiquan Zhu	34093648	Front Genet	WB
Li Zeng	28447732	Mol. Med Rep	
Yihui Zhu	35254603	Breast Cancer Res Treat	WB, IHC, IP

Stockage

Stockage:

Stocker à -20°C. Stable pendant un an après l'expédition.

Tampon de stockage:

PBS avec azoture de sodium à 0,02 % et glycérol à 50 % pH 7,3

L'aliquotage n'est pas nécessaire pour le stockage à -20C

*** Les 20ul contiennent 0,1% de BSA.

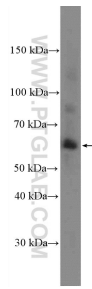
For technical support and original validation data for this product please contact:

T: 1 (888) 4PTGLAB (1-888-478-4522) (toll free in USA), or 1(312) 455-8498 (outside USA)

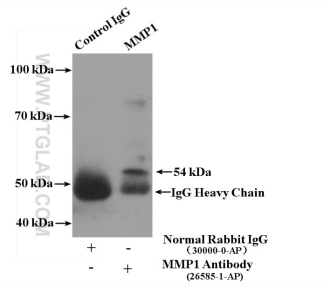
E: proteintech@ptglab.com
W: ptglab.com

This product is exclusively available under Proteintech Group brand and is not available to purchase from any other manufacturer.

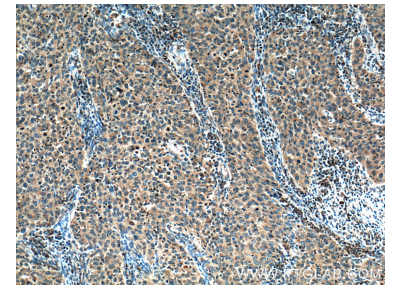
Données de validation sélectionnées



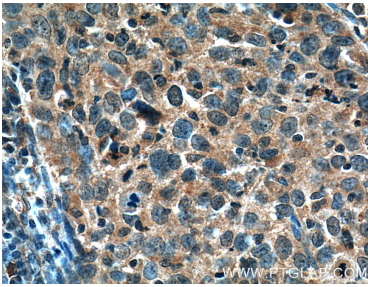
A375 cells were subjected to SDS PAGE followed by western blot with 26585-1-AP (MMP1 Antibody) at dilution of 1:300 incubated at room temperature for 1.5 hours.



IP Result of anti-MMP1 (IP:26585-1-AP, 4 μ g; Detection:26585-1-AP 1:300) with Raji cells lysate 4000 μ g.



Immunohistochemical analysis of paraffin-embedded human cervical cancer tissue slide using 26585-1-AP (MMP1 Antibody) at dilution of 1:200 (under 10x lens). Heat mediated antigen retrieval with Tris-EDTA buffer (pH 9.0).



Immunohistochemical analysis of paraffin-embedded human cervical cancer tissue slide using 26585-1-AP (MMP1 Antibody) at dilution of 1:200 (under 40x lens). Heat mediated antigen retrieval with Tris-EDTA buffer (pH 9.0).