

À des fins de recherche uniquement

Anticorps Polyclonal de lapin anti-p70(S6K)



Numéro de catalogue: 26587-1-AP

1 Publications

Informations de base

Numéro de catalogue:

26587-1-AP

Taille:

150ul, Concentration: 500 µg/ml by Nanodrop and 333 µg/ml by Bradford method using BSA as the standard;

Hôte:

Lapin

Isotype:

IgG

Immunogen Catalog Number:

AG24073

Numéro d'acquisition GenBank:

BC053365

Identification du gène (NCBI):

6198

Nom complet:

ribosomal protein S6 kinase, 70kDa, polypeptide 1

MW calculé

59 kDa

MW observés:

60-75 kDa

Méthode de purification:

Purification par affinité contre l'antigène

Dilutions recommandées:

WB 1:200-1:1000

IP 0.5-4.0 ug for IP and 1:200-1:1000 for WB

IHC 1:50-1:500

IF 1:50-1:500

Applications

Applications testées:

IF, IHC, IP, WB, ELISA

Demandes citées:

WB

Spécificité de l'espèce:

Humain

Espèces citées:

porc

Contrôles positifs:

WB : cellules MCF-7, cellules A549

IP : cellules A549,

IHC : tissu de cancer du poumon humain, tissu de cancer du sein humain

IF : cellules A549,

Remarque-IHC: il est suggéré de démasquer l'antigène avec un tampon de TE buffer pH 9,0; (*) A défaut, 'le démasquage de l'antigène peut être 'effectué avec un tampon citrate pH 6,0.

Informations générales

RPS6KB1(Ribosomal protein S6 kinase beta-1) is also named as STK14A, p70 S6KA and belongs to the S6 kinase subfamily. RPS6KB1 is a major substrate of MTOR and acts as a crucial effector of MTOR signaling pathway. It plays a key role in cell growth and proliferation by regulating INS sensitivity, metabolism, protein synthesis, and cell cycle. RPS6KB1 may play an important role in the progression of HCC and could serve as a potential molecular target for HCC therapy (PMID:22684641). RPS6KB1 is a 70 kDa protein and has 5 isoforms with the calculated molecular mass of 51-59kDa produced by alternative initiation.

Publications notables

Autrice	Pubmed ID	Journal	Application
Jane K Naberhuis	31503514	Am J Physiol Endocrinol Metab	WB

Stockage

Stockage:

Stocker à -20°C. Stable pendant un an après l'expédition.

Tampon de stockage:

PBS avec azoture de sodium à 0,02 % et glycérol à 50 % pH 7,3

L'aliquotage n'est pas nécessaire pour le stockage à -20C

*** Les 20ul contiennent 0,1% de BSA.

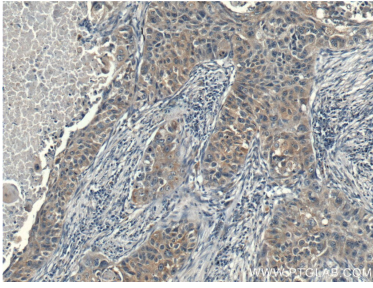
For technical support and original validation data for this product please contact:

T: 1 (888) 4PTGLAB (1-888-478-4522) (toll free in USA), or 1(312) 455-8498 (outside USA)

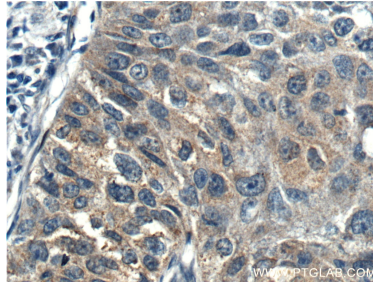
E: proteintech@ptglab.com
W: ptglab.com

This product is exclusively available under Proteintech Group brand and is not available to purchase from any other manufacturer.

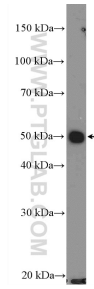
Données de validation sélectionnées



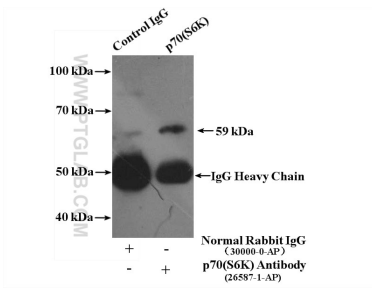
Immunohistochemical analysis of paraffin-embedded human lung cancer tissue slide using 26587-1-AP (p70(S6K) Antibody) at dilution of 1:200 (under 10x lens).



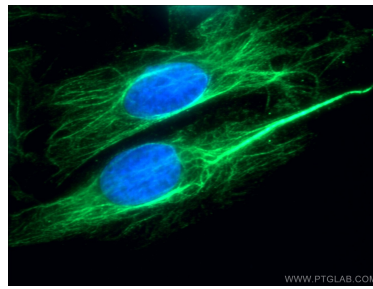
Immunohistochemical analysis of paraffin-embedded human lung cancer tissue slide using 26587-1-AP (p70(S6K) Antibody) at dilution of 1:200 (under 40x lens).



MCF-7 cells were subjected to SDS PAGE followed by western blot with 26587-1-AP (p70(S6K) Antibody) at dilution of 1:300 incubated at room temperature for 1.5 hours.



IP Result of anti-p70(S6K) (IP:26587-1-AP, 4ug; Detection:26587-1-AP 1:300) with A549 cells lysate 1600ug.



Immunofluorescent analysis of (-20°C Ethanol) fixed A549 cells using 26587-1-AP (p70(S6K) antibody) at dilution of 1:50 and Alexa Fluor 488-conjugated AffiniPure Goat Anti-Rabbit IgG(H+L).