

À des fins de recherche uniquement

Anticorps Polyclonal de lapin anti-KCC4/SLC12A7



Numéro de catalogue: 26590-1-AP

Informations de base

Numéro de catalogue: 26590-1-AP	Numéro d'acquisition GenBank: BC098390	Méthode de purification: Purification par affinité contre l'antigène
Taille: 150ul , Concentration: 900 µg/ml by Nanodrop;	Identification du gène (NCBI): 10723	Dilutions recommandées: WB 1:2000-1:10000
Hôte: Lapin	Nom complet: solute carrier family 12 (potassium/chloride transporters), member 7	
Isotype: IgG	MW observés: 119 kDa	
Immunogen Catalog Number: AG24954		

Applications

Applications testées: WB, ELISA	Contrôles positifs: WB : cellules BGC-823, cellules NCI-H1299, cellules Raji, cellules SH-SY5Y
Spécificité de l'espèce: Humain	

Informations générales

KCC4, also named as Solute carrier family 12 member 7 (SLC12A7), is a 1083 amino-acid protein, which belongs to the SLC12A transporter family. As a multi-pass membrane protein, the molecular weight of KCC4 is 119 kDa. KCC4 mediates electroneutral potassium-chloride cotransport when activated by cell swelling. Moreover, KCC4 may mediate K⁺ uptake into Deiters' cells in the cochlea and contribute to K⁺ recycling in the inner ear. KCC4 is important for the survival of cochlear outer and inner hair cells and the maintenance of the organ of Corti (Uniprot, GeneID:10723).

Stockage

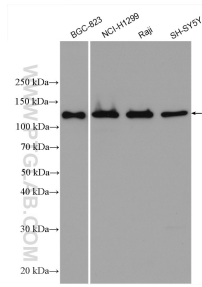
Stockage:
Stocker à -20°C. Stable pendant un an après l'expédition.
Tampon de stockage:
PBS avec azoture de sodium à 0,02 % et glycérol à 50 % pH 7,3
L'aliquotage n'est pas nécessaire pour le stockage à -20C

*** Les 20ul contiennent 0,1% de BSA.

For technical support and original validation data for this product please contact:
T: 1 (888) 4PTGLAB (1-888-478-4522) (toll free in USA), or 1(312) 455-8498 (outside USA) E: proteintech@ptglab.com W: ptglab.com

This product is exclusively available under Proteintech Group brand and is not available to purchase from any other manufacturer.

Données de validation sélectionnées



Various lysates were subjected to SDS PAGE followed by western blot with 26590-1-AP (KCC4/SLC12A7 antibody) at dilution of 1:5000 incubated at room temperature for 1.5 hours.