

À des fins de recherche uniquement

# Anticorps Polyclonal de lapin anti-SLC40A1/FPN1



Numéro de catalogue: 26601-1-AP

41 Publications

## Informations de base

Numéro de catalogue: 26601-1-AP	Numéro d'acquisition GenBank: BC037733	Méthode de purification: Purification par affinité contre l'antigène
Taille: 150ul , Concentration: 700 µg/ml by Nanodrop;	Identification du gène (NCBI): 30061	Dilutions recommandées: WB 1:500-1:2000 IHC 1:50-1:500
Hôte: Lapin	Nom complet: solute carrier family 40 (iron-regulated transporter), member 1	
Isotype: IgG	MW calculé: 62 kDa	
Immunogen Catalog Number: AG24273	MW observés: 62-70 kDa	

## Applications

Applications testées: IHC, WB, ELISA	Contrôles positifs: WB : cellules Caco-2, cellules HEK-293T, cellules HepG2, cellules SW480, rate de rat, tissu hépatique de souris, tissu splénique de souris IHC : tissu hépatique humain, tissu splénique de souris
Demandes citées: IHC, WB	
Spécificité de l'espèce: Humain, rat, souris	
Espèces citées: Humain, porc, poulet, rat, souris	
<b>Remarque-IHC: il est suggéré de démasquer l'antigène avec un tampon de TE buffer pH 9,0; (*) À défaut, 'le démasquage de l'antigène peut être effectué avec un tampon citrate pH 6,0.</b>	

## Informations générales

SLC40A1, also named as Ferroportin 1 (FPN1), is an iron transporter which is involved in iron export from duodenal epithelial cell and also in transfer of iron between maternal and fetal circulation. It has been reported that SLC40A1 mutations may lead to macrophage iron overload, hyperferritinemia, and normal transferrin saturation among ferroportin iron overload patients. This antibody detects 62-70 kDa protein as well as the fragments of 56 kDa and 35 kDa protein similar to papers in SDS-PAGE. (PMID: 21396368,16054062, 18974313)

## Publications notables

Autrice	Pubmed ID	Journal	Application
Ping Han	36309297	Free Radic Biol Med	WB
Ling Zeng	34610361	Free Radic Biol Med	WB
Dian Jiao	36437694	Anat Rec (Hoboken)	WB

## Stockage

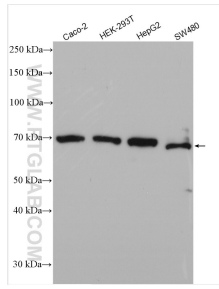
Stockage:  
Stocker à -20°C. Stable pendant un an après l'expédition.  
Tampon de stockage:  
PBS avec azoture de sodium à 0,02 % et glycérol à 50 % pH 7,3  
L'aliquotage n'est pas nécessaire pour le stockage à -20C

\*\*\* Les 20ul contiennent 0,1% de BSA.

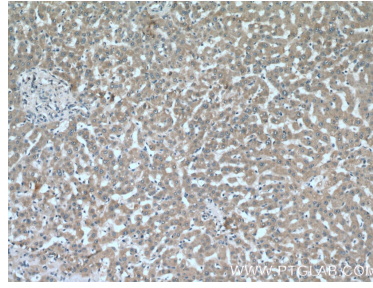
For technical support and original validation data for this product please contact:  
T: 1 (888) 4PTGLAB (1-888-478-4522) (toll free in USA), or 1(312) 455-8498 (outside USA)  
E: proteintech@ptglab.com  
W: ptglab.com

This product is exclusively available under Proteintech Group brand and is not available to purchase from any other manufacturer.

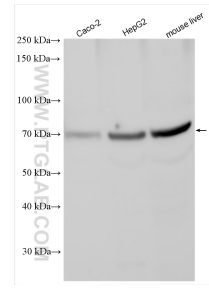
## Données de validation sélectionnées



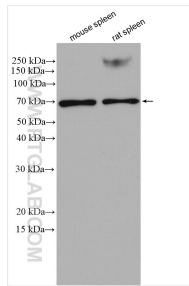
Various lysates were subjected to SDS PAGE followed by western blot with 26601-1-AP (SLC40A1/FPN1 antibody) at dilution of 1:1000 incubated at room temperature for 1.5 hours.



Immunohistochemical analysis of paraffin-embedded human liver tissue slide using 26601-1-AP (SLC40A1 Antibody) at dilution of 1:200 (under 10x lens).



Various lysates were subjected to SDS PAGE followed by western blot with 26601-1-AP (SLC40A1/FPN1 antibody) at dilution of 1:2000 incubated at room temperature for 1.5 hours.



Various lysates were subjected to SDS PAGE followed by western blot with 26601-1-AP (SLC40A1 antibody) at dilution of 1:800 incubated at room temperature for 1.5 hours.