

À des fins de recherche uniquement

Anticorps Polyclonal de lapin anti-SMARCA2-Specific



Numéro de catalogue: 26613-1-AP

Phare

4 Publications

Informations de base

Numéro de catalogue: 26613-1-AP	Numéro d'acquisition GenBank: NM_003070	Méthode de purification: Purification par affinité contre l'antigène
Taille: 150ul, Concentration: 700 µg/ml by Nanodrop and 393 µg/ml by Bradford method using BSA as the standard;	Identification du gène (NCBI): 6595	Dilutions recommandées: WB 1:500-1:1000 IHC 1:50-1:500 IF 1:50-1:500
Hôte: Lapin	Nom complet: SWI/SNF related, matrix associated, actin dependent regulator of chromatin, subfamily a, member 2	
Isotype: IgG	MW calculé: 181 kDa	
Immunogen Catalog Number: AG25157	MW observés: 180-190 kDa	

Applications

Applications testées:

IF, IHC, WB, ELISA

Demandes citées:

WB

Spécificité de l'espèce:

Humain, souris

Espèces citées:

Humain, rat, souris

Remarque-IHC: il est suggéré de démasquer l'antigène avec un tampon de TE buffer pH 9,0; (*) A défaut, 'le démasquage de l'antigène peut être effectué avec un tampon citrate pH 6,0.

Contrôles positifs:

WB : cellules HeLa, cellules MDA-MB-453s, cellules NIH/3T3

IHC : tissu de tumeur ovarienne humain,

IF : cellules HepG2,

Informations générales

SMARCA2 is a transcriptional coactivator cooperating with nuclear hormone receptors to potentiate transcriptional activation. SMARCA2 is involved in vitamin D-coupled transcription regulation via its association with the WINAC complex, a chromatin-remodeling complex recruited by vitamin D receptor (VDR), which is required for the ligand-bound VDR-mediated transrepression of the CYP27B1 gene.

Publications notables

Autrice	Pubmed ID	Journal	Application
Debolina Ganguly	30171737	Stem Cells	WB
Zhixiong Liu	30876848	Neuron	WB
Xiaoli Xu	30127991	Oncol Lett	WB

Stockage

Stockage:

Stocker à -20°C. Stable pendant un an après l'expédition.

Tampon de stockage:

PBS avec azoture de sodium à 0,02 % et glycérol à 50 % pH 7,3

L'aliquotage n'est pas nécessaire pour le stockage à -20C

*** Les 20ul contiennent 0,1% de BSA.

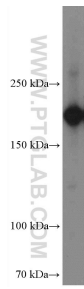
For technical support and original validation data for this product please contact:

T: 1 (888) 4PTGLAB (1-888-478-4522) (toll free in USA), or 1(312) 455-8498 (outside USA)

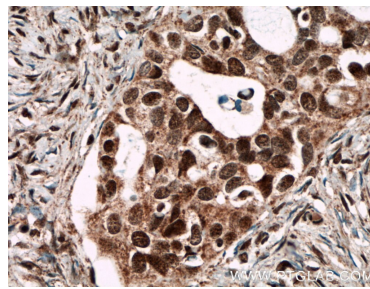
E: proteintech@ptglab.com
W: ptglab.com

This product is exclusively available under Proteintech Group brand and is not available to purchase from any other manufacturer.

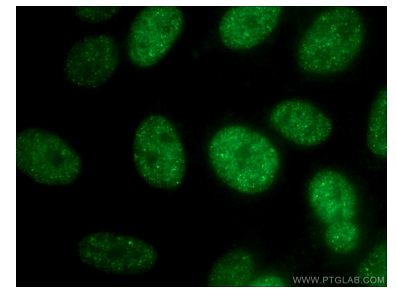
Données de validation sélectionnées



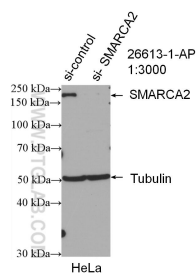
HeLa cells were subjected to SDS PAGE followed by western blot with 26613-1-AP (SMARCA2-Specific antibody) at dilution of 1:600 incubated at room temperature for 1.5 hours.



Immunohistochemical analysis of paraffin-embedded human ovary tumor tissue slide using 26613-1-AP (SMARCA2-Specific antibody) at dilution of 1:200 (under 40x lens. Heat mediated antigen retrieval with Tris-EDTA buffer (pH 9.0).



Immunofluorescent analysis of (-20°C Ethanol) fixed HepG2 cells using 26613-1-AP (SMARCA2-Specific antibody) at dilution of 1:50 and Alexa Fluor 488-conjugated AffiniPure Goat Anti-Rabbit IgG(H+L).



WB result of SMARCA2-Specific antibody (26613-1-AP; 1:3000; incubated at room temperature for 1.5 hours) with sh-Control and sh-SMARCA2-Specific transfected HeLa cells.