

À des fins de recherche uniquement

# Anticorps Polyclonal de lapin anti-CLCC1



Numéro de catalogue: 26680-1-AP

## Informations de base

<b>Numéro de catalogue:</b> 26680-1-AP	<b>Numéro d'acquisition GenBank:</b> BC002939	<b>Méthode de purification:</b> Purification par affinité contre l'antigène
<b>Taille:</b> 150ul, Concentration: 900 µg/ml by Nanodrop and 467 µg/ml by Bradford method using BSA as the standard;	<b>Identification du gène (NCBI):</b> 23155	<b>Dilutions recommandées:</b> WB 1:1000-1:6000
<b>Hôte:</b> Lapin	<b>Nom complet:</b> chloride channel CLIC-like 1	
<b>Isotype:</b> IgG	<b>MW calculé:</b> 551 aa, 62 kDa	
<b>Immunogen Catalog Number:</b> AG24682	<b>MW observés:</b> 50-60 kDa	

## Applications

<b>Applications testées:</b> WB, ELISA	<b>Contrôles positifs:</b> WB : cellules COLO 320,
<b>Spécificité de l'espèce:</b> Humain	

## Informations générales

CLCC1, also known as MCLC, is a transmembrane protein that localizes to intracellular compartments, including endoplasmic reticulum (ER), and it functions as a chloride channel (PMID: 11279057). It has been shown that loss of CLCC1 results in ER Stress, misfolded protein accumulation, and neurodegeneration (PMID: 25698737). CLCC1 forms homomultimer in the ER membrane and is a pore-forming component of an anion channel. Studies found that disruption of ER ion homeostasis maintained by CLCC1 is one of the causes of neurodegenerative diseases, such as ALS (amyotrophic lateral sclerosis) (PMID: 37142673).

## Stockage

**Stockage:**  
Stocker à -20°C. Stable pendant un an après l'expédition.  
**Tampon de stockage:**  
PBS avec azoture de sodium à 0,02 % et glycérol à 50 % pH 7,3  
L'aliquotage n'est pas nécessaire pour le stockage à -20C

\*\*\* Les 20ul contiennent 0,1% de BSA.

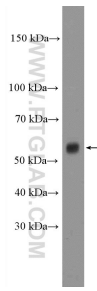
For technical support and original validation data for this product please contact:

T: 1 (888) 4PTGLAB (1-888-478-4522) (toll free in USA), or 1(312) 455-8498 (outside USA)

E: [proteintech@ptglab.com](mailto:proteintech@ptglab.com)  
W: [ptglab.com](http://ptglab.com)

This product is exclusively available under Proteintech Group brand and is not available to purchase from any other manufacturer.

## Données de validation sélectionnées



COLO 320 cells were subjected to SDS PAGE followed by western blot with 26680-1-AP (CLCC1 Antibody) at dilution of 1:3000 incubated at room temperature for 1.5 hours.