

À des fins de recherche uniquement

# Anticorps Polyclonal de lapin anti-CYR61/CCN1



Numéro de catalogue: 26689-1-AP

Phare

25 Publications

## Informations de base

Numéro de catalogue:  
26689-1-AP

Taille:  
150ul, Concentration: 750 µg/ml by Nanodrop and 333 µg/ml by Bradford method using BSA as the standard;

Hôte:  
Lapin

Isotype:  
IgG

Immunogen Catalog Number:  
AG25129

Numéro d'acquisition GenBank:  
BC001271

Identification du gène (NCBI):  
3491

Nom complet:  
cysteine-rich, angiogenic inducer, 61

MW calculé  
42 kDa

MW observés:  
42 kDa

Méthode de purification:  
Purification par affinité contre l'antigène

Dilutions recommandées:  
WB 1:1000-1:4000  
IHC 1:50-1:500  
IF 1:50-1:500

## Applications

Applications testées:  
IF, IHC, WB, ELISA

Demandes citées:  
IF, IHC, WB

Spécificité de l'espèce:  
Humain

Espèces citées:  
Humain, souris

**Remarque-IHC: il est suggéré de démasquer l'antigène avec un tampon de TE buffer pH 9,0; (\*) À défaut, 'le démasquage de l'antigène peut être 'effectué avec un tampon citrate pH 6,0.**

Contrôles positifs:

WB : cellules A431, cellules HeLa, cellules MDA-MB-453s

IHC : tissu de cancer du côlon humain, tissu de tumeur ovarienne humain

IF : cellules A431,

## Informations générales

CYR61 is a member of the CYR61/CTGF/NOV (CCN) protein family. CYR61 participated in cell mitogenesis, cellular adhesion, migration, differentiation, angiogenesis, and survival. Cyr61 is especially associated with diseases related to chronic inflammation, including RA, Crohn's disease and ulcerative colitis. CYR61 may serve essential roles as either an oncogene or a tumor suppressor, depending on the cancer cell type. CYR61 also induces angiogenesis, which supplies oxygen and nutrients to tumors during growth. CYR61 can also play a role in the proliferation, invasion, survival, and metastasis of cancer cells.

## Publications notables

Autrice	Pubmed ID	Journal	Application
Xiaobing Miao	32976820	Exp Mol Pathol	WB,IHC
Gang Xu	34480788	Environ Toxicol	WB
Nathan C Balukoff	33188200	Nat Commun	WB,IF

## Stockage

Stockage:

Stocker à -20°C. Stable pendant un an après l'expédition.

Tampon de stockage:

PBS avec azoture de sodium à 0,02 % et glycérol à 50 % pH 7,3

L'aliquotage n'est pas nécessaire pour le stockage à -20C

\*\*\* Les 20ul contiennent 0,1% de BSA.

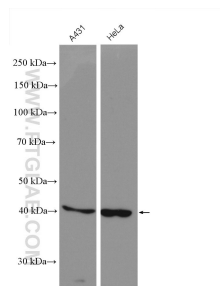
For technical support and original validation data for this product please contact:

T: 1 (888) 4PTGLAB (1-888-478-4522) (toll free in USA), or 1(312) 455-8498 (outside USA)

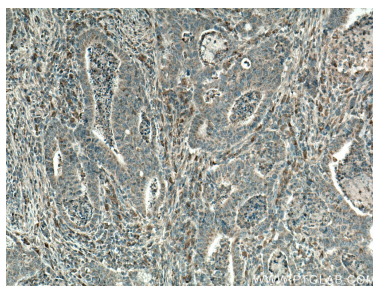
E: proteintech@ptglab.com  
W: ptglab.com

This product is exclusively available under Proteintech Group brand and is not available to purchase from any other manufacturer.

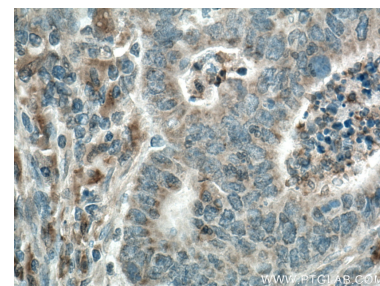
## Données de validation sélectionnées



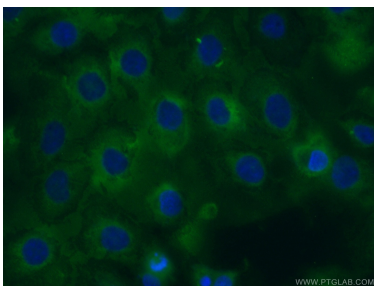
Various lysates were subjected to SDS PAGE followed by western blot with 26689-1-AP (CYR61/CCN1 antibody) at dilution of 1:2000 incubated at room temperature for 1.5 hours.



Immunohistochemical analysis of paraffin-embedded human colon cancer tissue slide using 26689-1-AP (CYR61/CCN1 antibody) at dilution of 1:200 (under 10x lens. Heat mediated antigen retrieval with Tris-EDTA buffer (pH 9.0).



Immunohistochemical analysis of paraffin-embedded human colon cancer tissue slide using 26689-1-AP (CYR61/CCN1 antibody) at dilution of 1:200 (under 40x lens. Heat mediated antigen retrieval with Tris-EDTA buffer (pH 9.0).



Immunofluorescent analysis of (-20°C Ethanol) fixed A431 cells using 26689-1-AP (CYR61/CCN1 antibody) at dilution of 1:50 and Alexa Fluor 488-conjugated AffiniPure Goat Anti-Rabbit IgG(H+L).