

À des fins de recherche uniquement

Anticorps Polyclonal de lapin anti-SLC17A9



Numéro de catalogue: 26731-1-AP

Phare

3 Publications

Informations de base

Numéro de catalogue:

26731-1-AP

Taille:

150ul, Concentration: 700 µg/ml by Nanodrop;

Hôte:

Lapin

Isotype:

IgG

Immunogen Catalog Number:

AG24970

Numéro d'acquisition GenBank:

BC025312

Identification du gène (NCBI):

63910

Nom complet:

solute carrier family 17, member 9

MW calculé

436 aa, 47 kDa

MW observés:

68-70 kDa

Méthode de purification:

Purification par affinité contre l'antigène

Dilutions recommandées:

WB 1:500-1:2000

IP 0.5-4.0 ug for IP and 1:500-1:2000 for WB

IHC 1:50-1:500

IF 1:50-1:500

Applications

Applications testées:

IF, IHC, IP, WB, ELISA

Demandes citées:

IF, IHC, WB

Spécificité de l'espèce:

Humain, souris

Espèces citées:

Humain, souris

Contrôles positifs:

WB : tissu cérébral humain foetal, cellules C2C12, tissu cérébral de rat, tissu cérébral de souris

IP : tissu cérébral de souris,

IHC : tissu cutané humain,

IF : tissu pancréatique humain,

Remarque-IHC: il est suggéré de démasquer l'antigène avec un tampon de TE buffer pH 9,0; (*) À défaut, le démasquage de l'antigène peut être effectué avec un tampon citrate pH 6,0.

Informations générales

Publications notables

Autrice	Pubmed ID	Journal	Application
Weiquan Li	36590170	iScience	IHC,WB
Junqing Li	37559587	Oncol Lett	WB
Jared Senfeld	37378329	iScience	IHC,IF

Stockage

Stockage:

Stocker à -20°C. Stable pendant un an après l'expédition.

Tampon de stockage:

PBS avec azoture de sodium à 0,02 % et glycérol à 50 % pH 7,3

L'aliquotage n'est pas nécessaire pour le stockage à -20C

*** Les 20ul contiennent 0,1% de BSA.

For technical support and original validation data for this product please contact:

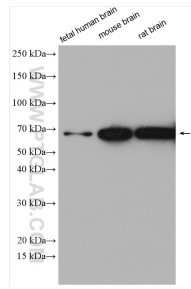
T: 1 (888) 4PTGLAB (1-888-478-4522) (toll free in USA), or 1(312) 455-8498 (outside USA)

E: proteintech@ptglab.com

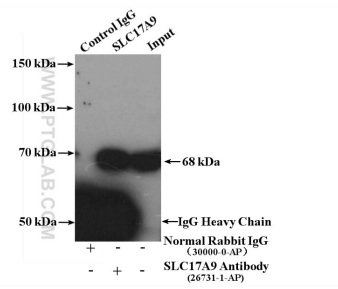
W: ptglab.com

This product is exclusively available under Proteintech Group brand and is not available to purchase from any other manufacturer.

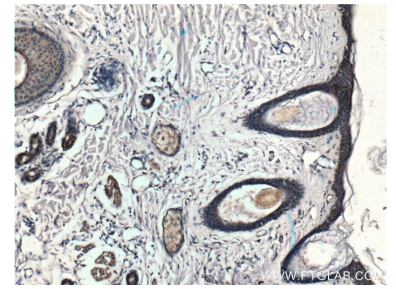
Données de validation sélectionnées



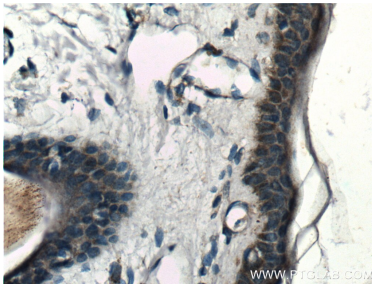
Various lysates were subjected to SDS PAGE followed by western blot with 26731-1-AP (SLC17A9 antibody) at dilution of 1:1000 incubated at room temperature for 1.5 hours.



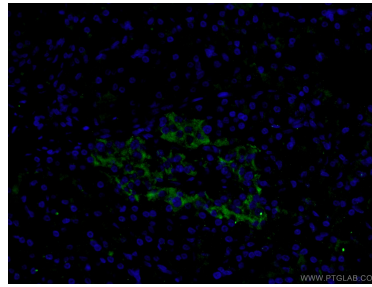
IP Result of anti-SLC17A9 (IP:26731-1-AP, 4ug; Detection:26731-1-AP 1:1000) with mouse brain tissue lysate 4400ug.



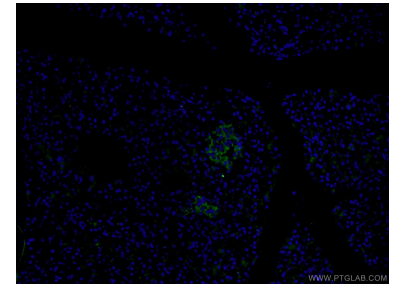
Immunohistochemical analysis of paraffin-embedded human skin tissue slide using 26731-1-AP (SLC17A9 Antibody) at dilution of 1:200 (under 10x lens).



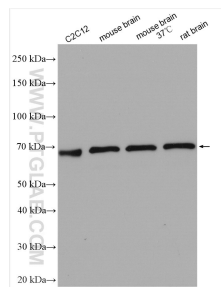
Immunohistochemical analysis of paraffin-embedded human skin tissue slide using 26731-1-AP (SLC17A9 Antibody) at dilution of 1:200 (under 40x lens).



Immunofluorescent analysis of (4% PFA) fixed human pancreas tissue using 26731-1-AP (SLC17A9 antibody) at dilution of 1:100 and Alexa Fluor 488-Conjugated AffiniPure Goat Anti-Rabbit IgG(H+L).



Immunofluorescent analysis of (4% PFA) fixed human pancreas tissue using 26731-1-AP (SLC17A9 antibody) at dilution of 1:100 and Alexa Fluor 488-Conjugated AffiniPure Goat Anti-Rabbit IgG(H+L).



Various lysates were subjected to SDS PAGE followed by western blot with 26731-1-AP (SLC17A9 antibody) at dilution of 1:1500 incubated at room temperature for 1.5 hours.