

À des fins de recherche uniquement

Anticorps Polyclonal de lapin anti-Cyclin D3



Numéro de catalogue: 26755-1-AP

Phare

26 Publications

Informations de base

Numéro de catalogue:
26755-1-AP

Taille:
150ul, Concentration: 1000 µg/ml by Nanodrop and 500 µg/ml by Bradford method using BSA as the standard;

Hôte:
Lapin

Isotype:
IgG

Immunogen Catalog Number:
AG25151

Numéro d'acquisition GenBank:
BC011616

Identification du gène (NCBI):

Nom complet:
cyclin D3

MW calculé
33 kDa

MW observés:
33 kDa

Méthode de purification:

Purification par affinité contre l'antigène

Dilutions recommandées:

WB 1:500-1:2000
IP 0.5-4.0 ug for IP and 1:500-1:2000 for WB
IHC 1:50-1:500
IF 1:50-1:500

Applications

Applications testées:

IF, IHC, IP, WB, ELISA

Demandes citées:

IHC, IP, WB

Spécificité de l'espèce:

Humain, rat

Espèces citées:

Humain, rat, souris

Remarque-IHC: il est suggéré de démasquer l'antigène avec un tampon de TE buffer pH 9,0; (*) A défaut, le démasquage de l'antigène peut être effectué avec un tampon citrate pH 6,0.

Contrôles positifs:

WB : cellules C6, cellules HeLa, cellules Jurkat, cellules K-562

IP : cellules K-562,

IHC : tissu pancréatique humain, tissu rénal de rat

IF : cellules HeLa,

Informations générales

Cyclin D3 belongs to the highly conserved cyclin family, whose members are characterized by a dramatic periodicity in protein abundance through the cell cycle. Cyclins function as regulators of CDK kinases. Different cyclins exhibit distinct expression and degradation patterns which contribute to the temporal coordination of each mitotic event. This cyclin forms a complex with and functions as a regulatory subunit of CDK4 or CDK6, whose activity is required for cell cycle G1/S transition. This protein has been shown to interact with and be involved in the phosphorylation of tumor suppressor protein Rb. The CDK4 activity associated with this cyclin was reported to be necessary for cell cycle progression through G2 phase into mitosis after UV radiation.

Publications notables

Autrice	Pubmed ID	Journal	Application
Alireza Delfarah	34637314	J Proteome Res	WB
Li Ma	33045308	Mol Cell Endocrinol	WB
Weijing He	33209975	Mol Ther Oncolytics	WB

Stockage

Stockage:

Stocker à -20°C. Stable pendant un an après l'expédition.

Tampon de stockage:

PBS avec azoture de sodium à 0,02 % et glycérol à 50 % pH 7,3

L'aliquotage n'est pas nécessaire pour le stockage à -20C

*** Les 20ul contiennent 0,1% de BSA.

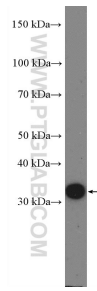
For technical support and original validation data for this product please contact:

T: 1 (888) 4PTGLAB (1-888-478-4522) (toll free in USA), or 1(312) 455-8498 (outside USA)

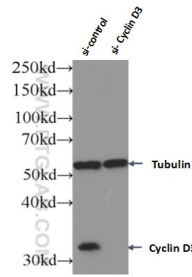
E: proteintech@ptglab.com
W: ptglab.com

This product is exclusively available under Proteintech Group brand and is not available to purchase from any other manufacturer.

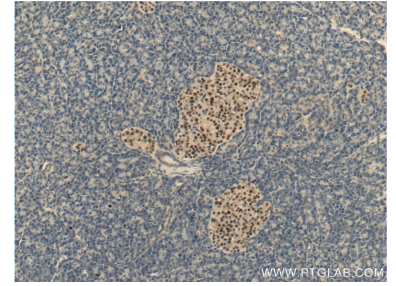
Données de validation sélectionnées



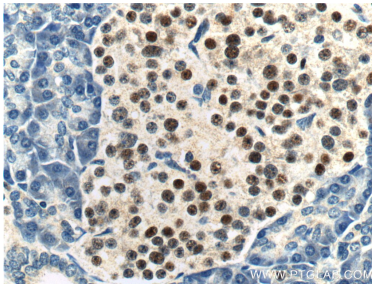
C6 cells were subjected to SDS PAGE followed by western blot with 26755-1-AP (Cyclin D3 Antibody) at dilution of 1:1000 incubated at room temperature for 1.5 hours.



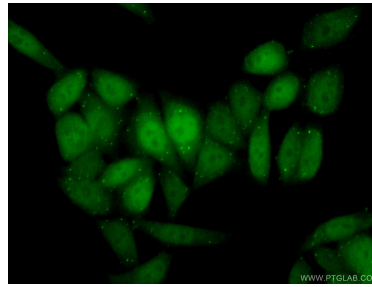
WB result of Cyclin D3 antibody (26755-1-AP; 1:10000; incubated at room temperature for 1.5 hours) with sh-Control and sh-Cyclin D3 transfected Jurkat cells.



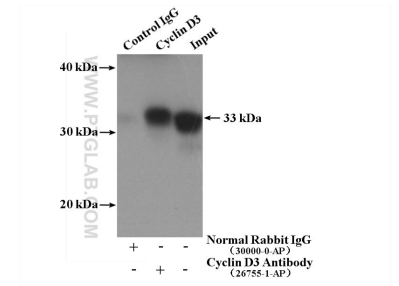
Immunohistochemical analysis of paraffin-embedded human pancreas tissue slide using 26755-1-AP (Cyclin D3 Antibody) at dilution of 1:200 (under 10x lens).



Immunohistochemical analysis of paraffin-embedded human pancreas tissue slide using 26755-1-AP (Cyclin D3 Antibody) at dilution of 1:200 (under 40x lens).



Immunofluorescent analysis of (10% Formaldehyde) fixed HeLa cells using 26755-1-AP (Cyclin D3 antibody) at dilution of 1:50 and Alexa Fluor 488-conjugated AffiniPure Goat Anti-Rabbit IgG(H+L).



IP Result of anti-Cyclin D3 (IP:26755-1-AP, 4ug; Detection:26755-1-AP 1:1000) with K-562 cells lysate 2800ug.