

À des fins de recherche uniquement

# Anticorps Polyclonal de lapin anti-LIF



Numéro de catalogue: 26757-1-AP

10 Publications

## Informations de base

<b>Numéro de catalogue:</b> 26757-1-AP	<b>Numéro d'acquisition GenBank:</b> BC093733	<b>Méthode de purification:</b> Purification par affinité contre l'antigène
<b>Taille:</b> 150ul , Concentration: 450 µg/ml by Nanodrop and 333 µg/ml by Bradford method using BSA as the standard;	<b>Identification du gène (NCBI):</b> 3976	<b>Dilutions recommandées:</b> WB 1:200-1:1000 IHC 1:50-1:500 IF 1:50-1:500
<b>Hôte:</b> Lapin	<b>Nom complet:</b> leukemia inhibitory factor (cholinergic differentiation factor)	
<b>Isotype:</b> IgG	<b>MW calculé:</b> 202 aa, 22 kDa	
<b>Immunogen Catalog Number:</b> AG25076	<b>MW observés:</b> 22 kDa	

## Applications

### Applications testées:

IF, IHC, WB, ELISA

### Demandes citées:

IHC, WB

### Spécificité de l'espèce:

Humain, souris

### Espèces citées:

Humain, souris

**Remarque-IHC: il est suggéré de démasquer l'antigène avec un tampon de TE buffer pH 9,0; (\*) A défaut, 'le démasquage de l'antigène peut être 'effectué avec un tampon citrate pH 6,0.**

### Contrôles positifs:

WB : cellules Jurkat, cellules MCF-7

IHC : tissu de cancer du poumon humain, tissu embryonnaire de souris

IF : tissu embryonnaire de souris,

## Informations générales

LIF is a pleiotropic cytokine with roles in several different systems. It is involved in the induction of hematopoietic differentiation in normal and myeloid leukemia cells, induction of neuronal cell differentiation, regulator of mesenchymal to epithelial conversion during kidney development, and may also have a role in immune tolerance at the maternal-fetal interface.

## Publications notables

Autrice	Pubmed ID	Journal	Application
Xiaofang Tan	32950746	J Gynecol Obstet Hum Reprod	IHC
Wenna Jiang	32914874	Int J Cancer	IHC
Yuhao Zhao	34496883	Reprod Biol Endocrinol	WB

## Stockage

### Stockage:

Stocker à -20°C. Stable pendant un an après l'expédition.

### Tampon de stockage:

PBS avec azoture de sodium à 0,02 % et glycérol à 50 % pH 7,3

L'aliquotage n'est pas nécessaire pour le stockage à -20C

\*\*\* Les 20ul contiennent 0,1% de BSA.

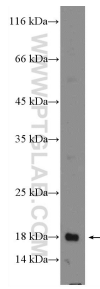
For technical support and original validation data for this product please contact:

T: 1 (888) 4PTGLAB (1-888-478-4522) (toll free in USA), or 1(312) 455-8498 (outside USA)

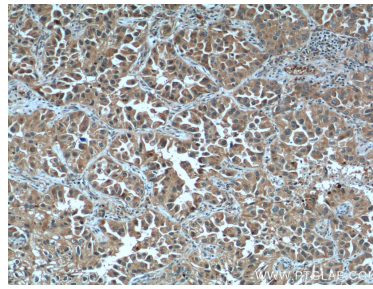
E: [proteintech@ptglab.com](mailto:proteintech@ptglab.com)  
W: [ptglab.com](http://ptglab.com)

This product is exclusively available under Proteintech Group brand and is not available to purchase from any other manufacturer.

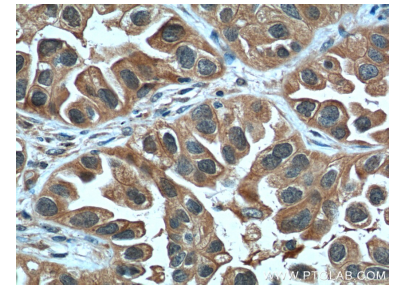
## Données de validation sélectionnées



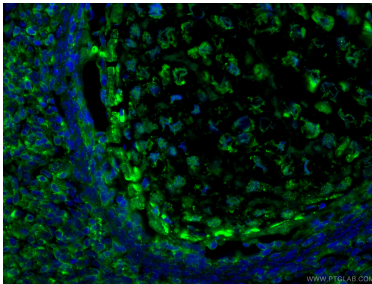
Jurkat cells were subjected to SDS PAGE followed by western blot with 26757-1-AP (LIF Antibody) at dilution of 1:300 incubated at room temperature for 1.5 hours.



Immunohistochemical analysis of paraffin-embedded human lung cancer tissue slide using 26757-1-AP (LIF Antibody) at dilution of 1:200 (under 10x lens). Heat mediated antigen retrieval with Tris-EDTA buffer (pH 9.0).



Immunohistochemical analysis of paraffin-embedded human lung cancer tissue slide using 26757-1-AP (LIF Antibody) at dilution of 1:200 (under 40x lens). Heat mediated antigen retrieval with Tris-EDTA buffer (pH 9.0).



Immunofluorescent analysis of (4% PFA) fixed mouse embryo tissue using LIF antibody (26757-1-AP) at dilution of 1:200 and CoraLite®488-Conjugated AffiniPure Goat Anti-Rabbit IgG(H+L).