

À des fins de recherche uniquement

# Anticorps Polyclonal de lapin anti-SUFU



Numéro de catalogue: 26759-1-AP

Phare

9 Publications

## Informations de base

Numéro de catalogue:  
26759-1-AP

Taille:  
150ul, Concentration: 600 µg/ml by Nanodrop and 433 µg/ml by Bradford method using BSA as the standard;

Hôte:  
Lapin

Isotype:  
IgG

Immunogen Catalog Number:  
AG25200

Numéro d'acquisition GenBank:  
BC013291

Identification du gène (NCBI):  
51684

Nom complet:  
suppressor of fused homolog (Drosophila)

MW calculé

54 kDa

MW observés:

50 kDa

Méthode de purification:  
Purification par affinité contre l'antigène

Dilutions recommandées:  
WB 1:1000-1:4000  
IP 0.5-4.0 ug for IP and 1:500-1:2000 for WB  
IHC 1:50-1:500

## Applications

Applications testées:  
IHC, IP, WB, ELISA

Demandes citées:  
IF, IHC, WB

Spécificité de l'espèce:  
Humain, rat, souris

Espèces citées:  
Humain, rat, souris

**Remarque-IHC: il est suggéré de démasquer l'antigène avec un tampon de TE buffer pH 9,0; (\*) A défaut, le démasquage de l'antigène peut être effectué avec un tampon citrate pH 6,0.**

Contrôles positifs:

WB : cellules HeLa, cellules C6, cellules HEK-293, cellules NIH/3T3

IP : cellules NIH/3T3,

IHC : tissu rénal humain,

## Informations générales

Sufu (Suppressor of fused) is a central regulator of Hh (Hedgehog) signaling and acts as a tumor suppressor by maintaining the Gli (Glioma-associated oncogene homolog) transcription factors inactive. Loss of Sufu function promotes tumorigenesis.

## Publications notables

Autrice	Pubmed ID	Journal	Application
Xiao Ding	31519191	J Exp Clin Cancer Res	WB,IHC
Leah Schembs	35584663	Cell Rep	IF
Liwei Zhang	32550895	Theranostics	WB

## Stockage

Stockage:

Stocker à -20°C. Stable pendant un an après l'expédition.

Tampon de stockage:

PBS avec azoture de sodium à 0,02 % et glycérol à 50 % pH 7,3

L'aliquotage n'est pas nécessaire pour le stockage à -20C

\*\*\* Les 20ul contiennent 0,1% de BSA.

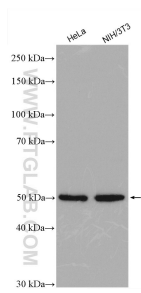
For technical support and original validation data for this product please contact:

T: 1 (888) 4PTGLAB (1-888-478-4522) (toll free in USA), or 1(312) 455-8498 (outside USA)

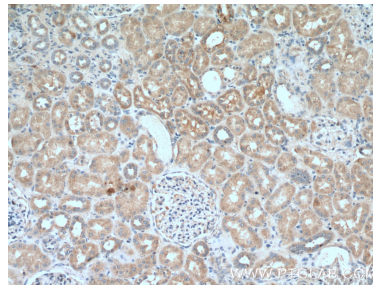
E: proteintech@ptglab.com  
W: ptglab.com

This product is exclusively available under Proteintech Group brand and is not available to purchase from any other manufacturer.

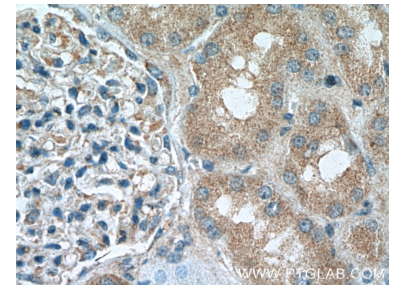
## Données de validation sélectionnées



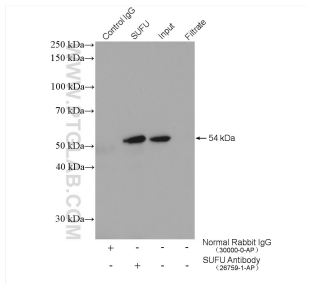
Various lysates were subjected to SDS PAGE followed by western blot with 26759-1-AP (SUFU antibody) at dilution of 1:2000 incubated at room temperature for 1.5 hours.



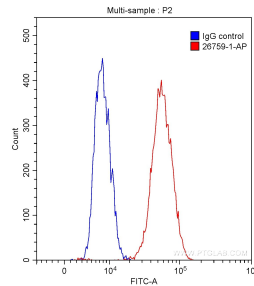
Immunohistochemical analysis of paraffin-embedded human kidney tissue slide using 26759-1-AP (SUFU Antibody) at dilution of 1:200 (under 10x lens).



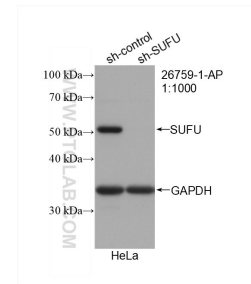
Immunohistochemical analysis of paraffin-embedded human kidney tissue slide using 26759-1-AP (SUFU Antibody) at dilution of 1:200 (under 40x lens).



IP result of anti-SUFU (IP:26759-1-AP, 4ug; Detection:26759-1-AP 1:1000) with NIH/3T3 cells lysate 1600 ug.



$1 \times 10^6$  HEK-293 cells were intracellularly stained with 0.20 ug/test Anti-Human SUFU (26759-1-AP) (red) or 0.20 ug control antibody (blue) and CoraLite® 488-Conjugated AffiniPure Goat Anti-Rabbit IgG(H+L) with dilution 1:1000. Fixed with 90% MeOH.



WB result of SUFU antibody (26759-1-AP; 1:1000; incubated at room temperature for 1.5 hours) with sh-Control and sh-SUFU transfected HeLa cells.