

À des fins de recherche uniquement

Anticorps Polyclonal de lapin anti-YTHDF2



Numéro de catalogue: 26771-1-AP

1 Publications

Informations de base

Numéro de catalogue:

26771-1-AP

Taille:

150ul, Concentration: 500 µg/ml by Nanodrop and 200 µg/ml by Bradford method using BSA as the standard;

Hôte:

Lapin

Isotype:

IgG

Immunogen Catalog Number:

AG25348

Numéro d'acquisition GenBank:

BC002559

Identification du gène (NCBI):

51441

Nom complet:

YTH domain family, member 2

MW calculé

62 kDa

MW observés:

65-70 kDa

Méthode de purification:

Purification par affinité contre l'antigène

Dilutions recommandées:

WB 1:500-1:2000

IHC 1:50-1:500

IF 1:50-1:500

Applications

Applications testées:

IF, IHC, WB, ELISA

Demandes citées:

WB

Spécificité de l'espèce:

Humain, souris

Espèces citées:

souris

Remarque-IHC: il est suggéré de démasquer l'antigène avec un tampon de TE buffer pH 9,0; (*) A défaut, le démasquage de l'antigène peut être effectué avec un tampon citrate pH 6,0.

Contrôles positifs:

WB : cellules Raji, tissu cérébral de souris

IHC : tissu testiculaire humain,

IF : cellules HepG2,

Informations générales

YTHDF2, also named as YTH domain-containing family protein 2, is a 579 amino acid protein, which contains 1 YTH domain. YTHDF2 specifically recognizes and binds N6-methyladenosine (m6A)-containing RNAs, and regulates mRNA stability. M6A is a modification present at internal sites of mRNAs and some non-coding RNAs and plays a role in the efficiency of mRNA splicing, processing and stability. YTHDF2 acts as a regulator of mRNA stability: binding to m6A-containing mRNAs results in the localization to mRNA decay sites, such as processing bodies (P-bodies), leading to mRNA degradation. YTHDF2 also acts as a promoter of cap-independent mRNA translation following heat shock stress: upon stress, relocalizes to the nucleus and specifically binds mRNAs with some m6A methylation mark at their 5'-UTR, protecting demethylation of mRNAs by FTO, thereby promoting cap-independent mRNA translation. The calculated molecular weight of YTHDF2 is 62 kDa, but the phosphorylated YTHDF2 is about 65-70 kDa.

Publications notables

Autrice	Pubmed ID	Journal	Application
Honghu He	37309980	J Neurochem	WB

Stockage

Stockage:

Stocker à -20°C. Stable pendant un an après l'expédition.

Tampon de stockage:

PBS avec azoture de sodium à 0,02 % et glycérol à 50 % pH 7,3

L'aliquotage n'est pas nécessaire pour le stockage à -20C

*** Les 20ul contiennent 0,1% de BSA.

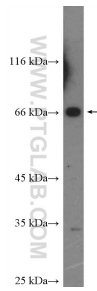
For technical support and original validation data for this product please contact:

T: 1 (888) 4PTGLAB (1-888-478-4522) (toll free in USA), or 1(312) 455-8498 (outside USA)

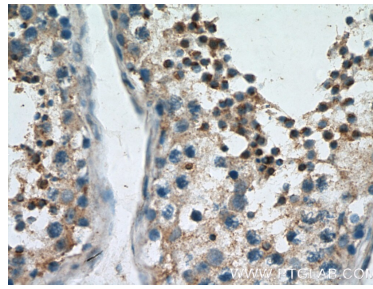
E: proteintech@ptglab.com
W: ptglab.com

This product is exclusively available under Proteintech Group brand and is not available to purchase from any other manufacturer.

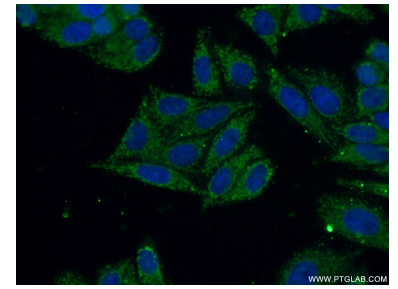
Données de validation sélectionnées



Raji cells were subjected to SDS PAGE followed by western blot with 26771-1-AP (YTHDF2 Antibody) at dilution of 1:1000 incubated at room temperature for 1.5 hours.



Immunohistochemical analysis of paraffin-embedded human testis tissue slide using 26771-1-AP (YTHDF2 Antibody) at dilution of 1:200 (under 40x lens).



Immunofluorescent analysis of (4% PFA) fixed HepG2 cells using 26771-1-AP (YTHDF2 antibody) at dilution of 1:50 and Alexa Fluor 488-conjugated AffiniPure Goat Anti-Rabbit IgG(H+L).