

À des fins de recherche uniquement

# Anticorps Polyclonal de lapin anti-YTHDF1



Numéro de catalogue: 26787-1-AP

1 Publications

## Informations de base

Numéro de catalogue:

26787-1-AP

Taille:

150ul, Concentration: 300 µg/ml by Bradford method using BSA as the standard;

Hôte:

Lapin

Isotype:

IgG

Immunogen Catalog Number:

AG25347

Numéro d'acquisition GenBank:

BC050284

Identification du gène (NCBI):

54915

Nom complet:

YTH domain family, member 1

MW calculé

559 aa, 61 kDa

MW observés:

60 kDa

Méthode de purification:

Purification par affinité contre l'antigène

Dilutions recommandées:

WB 1:500-1:1000

IP 0.5-4.0 ug for IP and 1:200-1:1000 for WB

## Applications

Applications testées:

IP, WB, ELISA

Demandes citées:

IHC, WB

Spécificité de l'espèce:

Humain

Espèces citées:

souris

Contrôles positifs:

WB : cellules HepG2,

IP : cellules HepG2,

## Informations générales

YTHDF1, also named YTH domain-containing family protein 1 or C20orf21, is a 559 amino acid protein, which localizes in the cytoplasm. YTHDF1 specifically recognizes and binds N6-methyladenosine (m6A)-containing mRNAs, and promotes mRNA translation efficiency. M6A is a modification present at the internal sites of mRNAs and some non-coding RNAs and plays a role in the efficiency of mRNA splicing, processing, and stability. YTHDF1 acts as a regulator of mRNA translation efficiency: promotes ribosome loading to m6A-containing mRNAs and interacts with translation initiation factors eIF3 (EIF3A or EIF3B) to facilitate translation initiation. YTHDF1 exists two isoforms and the calculated molecular weight of isoforms are 61 kDa and 21 kDa.

## Publications notables

Autrice	Pubmed ID	Journal	Application
Xiaohui Bai	35939138	Cell Mol Neurobiol	WB,IHC

## Stockage

Stockage:

Stocker à -20°C. Stable pendant un an après l'expédition.

Tampon de stockage:

PBS avec azoture de sodium à 0,02 % et glycérol à 50 % pH 7,3

L'aliquotage n'est pas nécessaire pour le stockage à -20C

\*\*\* Les 20ul contiennent 0,1% de BSA.

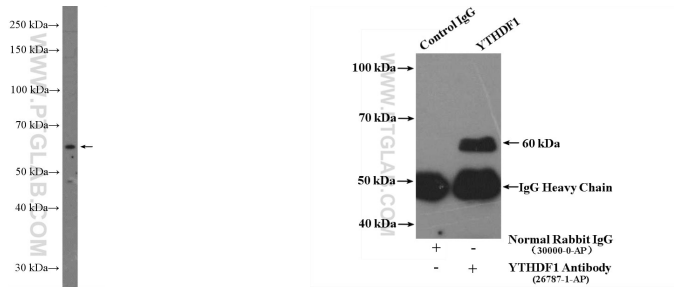
For technical support and original validation data for this product please contact:

T: 1 (888) 4PTGLAB (1-888-478-4522) (toll free in USA), or 1(312) 455-8498 (outside USA)

E: proteintech@ptglab.com  
W: ptglab.com

This product is exclusively available under Proteintech Group brand and is not available to purchase from any other manufacturer.

## Données de validation sélectionnées



HepG2 cells were subjected to SDS PAGE followed by western blot with 26787-1-AP (YTHDF1 Antibody) at dilution of 1:600 incubated at room temperature for 1.5 hours.

IP Result of anti-YTHDF1 (IP:26787-1-AP, 4ug; Detection:26787-1-AP 1:300) with HepG2 cells lysate 3200ug.