

À des fins de recherche uniquement

Anticorps Polyclonal de lapin anti-CXCL2



Numéro de catalogue: 26791-1-AP

4 Publications

Informations de base

Numéro de catalogue: 26791-1-AP	Numéro d'acquisition GenBank: BC015753	Méthode de purification: Purification par affinité contre l'antigène
Taille: 150ul , Concentration: 600 µg/ml by Nanodrop;	Identification du gène (NCBI): 2920	Dilutions recommandées: WB 1:500-1:1000
Hôte: Lapin	Nom complet: chemokine (C-X-C motif) ligand 2	
Isotype: IgG	MW calculé: 107 aa, 11 kDa	
Immunogen Catalog Number: AG25376	MW observés: 11 kDa	

Applications

Applications testées: WB, ELISA	Contrôles positifs: WB : cellules HepG2, tissu pulmonaire de rat
Demandes citées: IF, WB	
Spécificité de l'espèce: Humain, rat, souris	
Espèces citées: souris	

Informations générales

CXCL2, also known as macrophage inflammatory protein 2-alpha (MIP2-alpha), is a member of CXC chemokine family that binds to CXC chemokine receptor 2 (CXCR2). CXCL2 is mainly produced by macrophages, endothelial cells, epithelial cells and tumor cells. CXCL2 plays important roles in various biological progresses such as angiogenesis, inflammation, immune response and cancer biological behaviors. Under inflammatory conditions in CNS, microglia and astrocytes may secrete CXCL2 as well as other chemokines, which induces chemotaxis and infiltration of circulatory neutrophils. Indeed, previous studies suggest that CXCL2 is involved in Alzheimer disease, multiple sclerosis and brain ischemia.

Publications notables

Autrice	Pubmed ID	Journal	Application
Lu Wang	34555641	Int Immunopharmacol	WB
Guozhen Wang	34507947	J Immunol	WB
Shuang Ge	34830293	Int J Mol Sci	IF

Stockage

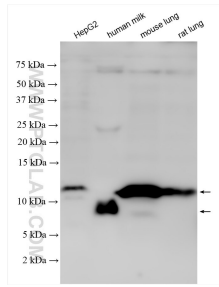
Stockage:
Stocker à -20°C. Stable pendant un an après l'expédition.
Tampon de stockage:
PBS avec azoture de sodium à 0,02 % et glycérol à 50 % pH 7,3
L'aliquotage n'est pas nécessaire pour le stockage à -20C

*** Les 20ul contiennent 0,1% de BSA.

For technical support and original validation data for this product please contact:
T: 1 (888) 4PTGLAB (1-888-478-4522) (toll free in USA), or 1(312) 455-8498 (outside USA)
E: proteintech@ptglab.com
W: ptglab.com

This product is exclusively available under Proteintech Group brand and is not available to purchase from any other manufacturer.

Données de validation sélectionnées



Various lysates were subjected to SDS PAGE followed by western blot with 26791-1-AP (CXCL2 antibody) at dilution of 1:500 incubated at room temperature for 1.5 hours.