

À des fins de recherche uniquement

Anticorps Polyclonal de lapin anti-SLC25A12



Numéro de catalogue: 26804-1-AP

Informations de base

| | | |
|--|--|---|
| Numéro de catalogue: 26804-1-AP | Numéro d'acquisition GenBank: BC016932 | Méthode de purification: Purification par affinité contre l'antigène |
| Taille: 150ul , Concentration: 260 µg/ml by Nanodrop and 200 µg/ml by Bradford method using BSA as the standard; | Identification du gène (NCBI): 8604 | Dilutions recommandées: WB 1:1000-1:4000 IHC 1:50-1:500 IF 1:50-1:500 |
| Hôte: Lapin | Nom complet: solute carrier family 25 (mitochondrial carrier, Aralar), member 12 | |
| Isotype: IgG | MW calculé 75 kDa, 63 kDa | |
| Immunogen Catalog Number: AG25150 | MW observés: 63 kDa | |

Applications

Applications testées:
IF, IHC, WB, ELISA

Spécificité de l'espèce:
Humain, souris

Remarque-IHC: il est suggéré de démasquer l'antigène avec un tampon de TE buffer pH 9.0; (*) À défaut, le démasquage de l'antigène peut être effectué avec un tampon citrate pH 6,0.

Contrôles positifs:

WB : tissu cardiaque de souris, tissu cardiaque de rat, tissu de muscle squelettique de souris, tissu rénal de souris

IHC : tissu de cancer du sein humain, tissu de cancer de l'estomac humain, tissu de cancer du pancréas humain, tissu rénal de souris

IF : tissu cardiaque de souris,

Informations générales

Stockage

Stockage:
Stocker à -20°C. Stable pendant un an après l'expédition.
Tampon de stockage:
PBS avec azoture de sodium à 0,02 % et glycérol à 50 % pH 7,3
L'aliquotage n'est pas nécessaire pour le stockage à -20C

***** Les 20ul contiennent 0,1% de BSA.**

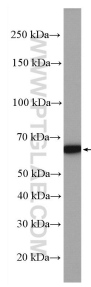
For technical support and original validation data for this product please contact:

T: 1 (888) 4PTGLAB (1-888-478-4522) (toll free in USA), or 1(312) 455-8498 (outside USA)

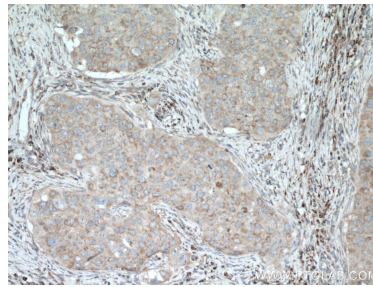
E: proteintech@ptglab.com
W: ptglab.com

This product is exclusively available under Proteintech Group brand and is not available to purchase from any other manufacturer.

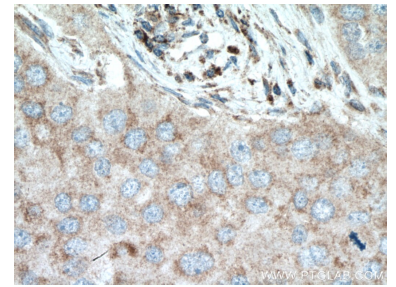
Données de validation sélectionnées



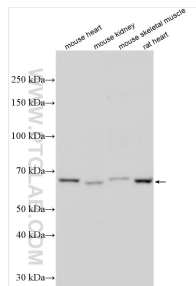
mouse skeletal muscle tissue were subjected to SDS PAGE followed by western blot with 26804-1-AP (SLC25A12 antibody) at dilution of 1:1000 incubated at room temperature for 1.5 hours.



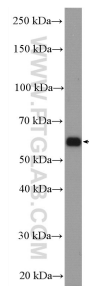
Immunohistochemical analysis of paraffin-embedded human breast cancer tissue slide using 26804-1-AP (SLC25A12 antibody) at dilution of 1:200 (under 10x lens. Heat mediated antigen retrieval with Tris-EDTA buffer (pH 9.0).



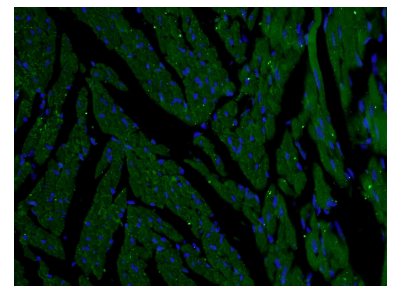
Immunohistochemical analysis of paraffin-embedded human breast cancer tissue slide using 26804-1-AP (SLC25A12 antibody) at dilution of 1:200 (under 40x lens. Heat mediated antigen retrieval with Tris-EDTA buffer (pH 9.0).



Various lysates were subjected to SDS PAGE followed by western blot with 26804-1-AP (SLC25A12 antibody) at dilution of 1:2000 incubated at room temperature for 1.5 hours.



mouse kidney tissue were subjected to SDS PAGE followed by western blot with 26804-1-AP (SLC25A12 antibody) at dilution of 1:1000 incubated at room temperature for 1.5 hours.



Immunofluorescent analysis of (4% PFA) fixed tissue using 26804-1-AP (SLC25A12 antibody) at dilution of 1:50 and Alexa Fluor 488-conjugated AffiniPure Goat Anti-Rabbit IgG(H+L).