

À des fins de recherche uniquement

# Anticorps Polyclonal de lapin anti-BCLAF1



Numéro de catalogue: 26809-1-AP

5 Publications

## Informations de base

<b>Numéro de catalogue:</b> 26809-1-AP	<b>Numéro d'acquisition GenBank:</b> BC132780	<b>Méthode de purification:</b> Purification par affinité contre l'antigène
<b>Taille:</b> 150ul, Concentration: 400 µg/ml by Nanodrop and 267 µg/ml by Bradford method using BSA as the standard;	<b>Identification du gène (NCBI):</b> 9774	<b>Dilutions recommandées:</b> WB 1:1000-1:4000
<b>Hôte:</b> Lapin	<b>Nom complet:</b> BCL2-associated transcription factor 1	
<b>Isotype:</b> IgG	<b>MW calculé:</b> 920 aa, 106 kDa	
<b>Immunogen Catalog Number:</b> AG25210	<b>MW observés:</b> 145 kDa	

## Applications

<b>Applications testées:</b> WB, ELISA	<b>Contrôles positifs:</b> WB: cellules Jurkat, cellules MCF-7
<b>Demandes citées:</b> IF, IHC, WB	
<b>Spécificité de l'espèce:</b> Humain	
<b>Espèces citées:</b> Humain, porc, souris	

## Informations générales

BCLF1, also named as Bcl-2-associated transcription factor 1, is a 920 amino acid protein, which Interacts with Bcl-2 related proteins, EMD, with the adenovirus E1B 19 kDa protein and with DNA. BCLF1 as a death-promoting transcriptional repressor may be involved in cyclin-D1/CCND1 mRNA stability through the SNARP complex which associates with both the 3' end of the CCND1 gene and its mRNA. The calculated molecular weight of BCLF1 is a 110 kDa, but the modified BCLF1 protein is about 140-150 kDa.

## Publications notables

Autrice	Pubmed ID	Journal	Application
Wenchong Tan	36137350	Transl Oncol	WB, IHC, IF
Mingwei Chen	33188158	Aging (Albany NY)	WB
Wenbo Liu	36355419	eLife	WB

## Stockage

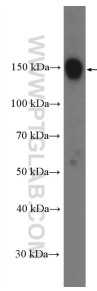
**Stockage:**  
Stocker à -20°C. Stable pendant un an après l'expédition.  
**Tampon de stockage:**  
PBS avec azoture de sodium à 0,02 % et glycérol à 50 % pH 7,3  
L'aliquotage n'est pas nécessaire pour le stockage à -20C

\*\*\* Les 20ul contiennent 0,1% de BSA.

For technical support and original validation data for this product please contact:  
T: 1 (888) 4PTGLAB (1-888-478-4522) (toll free in USA), or 1(312) 455-8498 (outside USA)  
E: proteintech@ptglab.com  
W: ptglab.com

This product is exclusively available under Proteintech Group brand and is not available to purchase from any other manufacturer.

## Données de validation sélectionnées



Jurkat cells were subjected to SDS PAGE followed by western blot with 26809-1-AP (BCLAF1 Antibody) at dilution of 1:2000 incubated at room temperature for 1.5 hours.