

À des fins de recherche uniquement

Anticorps Polyclonal de lapin anti-CDK12/CRKRS



Numéro de catalogue: 26816-1-AP

Phare

4 Publications

Informations de base

Numéro de catalogue: 26816-1-AP	Numéro d'acquisition GenBank: BC150265	Méthode de purification: Purification par affinité contre l'antigène
Taille: 150ul, Concentration: 1200 µg/ml by Nanodrop;	Identification du gène (NCBI): 51755	Dilutions recommandées: WB 1:2000-1:16000 IF 1:50-1:500
Hôte: Lapin	Nom complet: Cdc2-related kinase, arginine/serine-rich	
Isotype: IgG	MW calculé: 1490 aa, 164 kDa	
Immunogen Catalog Number: AG25323	MW observés: 180-200 kDa	

Applications

Applications testées: IF, WB, ELISA	Contrôles positifs: WB : cellules HeLa, cellules Jurkat, cellules K-562 IF : cellules HeLa,
Demandes citées: WB	
Spécificité de l'espèce: Humain	
Espèces citées: Humain	

Informations générales

CRKRS (Cdc2-related kinase, Arg/Ser), also named as cyclin-dependent kinase 12 (CKD12), belongs to CDC2/CDKX subfamily. CDK12 can form a heterodimeric complex with its activating partner, cyclin K, to regulate important cellular physiological processes that include transcriptional regulation, regulation of DNA damage repair genes such as BRCA1 and ATM, suppression of intronic polyadenylation, and susceptibility to PARP inhibitors (PMID: 30487607, 24240700, 31694772). CDK12 has 3 isoforms with the calculated molecular mass of 164/163/141 kDa, and the apparent molecular mass of 180-200 kDa due to some modifications (PMID 11683387, 22988298).

Publications notables

Autrice	Pubmed ID	Journal	Application
Yan Liang	34686673	Cell Death Discov	WB
Hui Li	33429148	Eur J Cancer	WB
Mareike Polenkowski	36590164	iScience	WB

Stockage

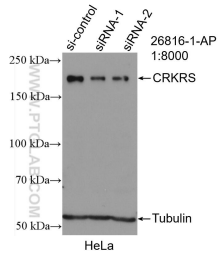
Stockage:
Stocker à -20°C. Stable pendant un an après l'expédition.
Tampon de stockage:
PBS avec azoture de sodium à 0,02 % et glycérol à 50 % pH 7,3
L'aliquotage n'est pas nécessaire pour le stockage à -20C

*** Les 20ul contiennent 0,1% de BSA.

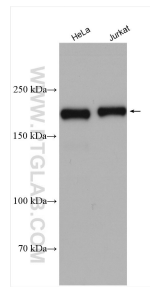
For technical support and original validation data for this product please contact:
T: 1 (888) 4PTGLAB (1-888-478-4522) (toll free in USA), or 1(312) 455-8498 (outside USA)
E: proteintech@ptglab.com
W: ptglab.com

This product is exclusively available under Proteintech Group brand and is not available to purchase from any other manufacturer.

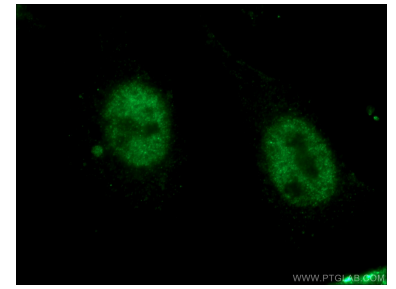
Données de validation sélectionnées



WB result of CDK12/CRKRS antibody (26816-1-AP; 1:8000; incubated at room temperature for 1.5 hours) with sh-Control and sh-CDK12/CRKRS transfected HeLa cells.



Various lysates were subjected to SDS PAGE followed by western blot with 26816-1-AP (CDK12/CRKRS antibody) at dilution of 1:8000 incubated at room temperature for 1.5 hours.



Immunofluorescent analysis of (10% Formaldehyde) fixed HeLa cells using 26816-1-AP (CRKRS antibody) at dilution of 1:50 and Alexa Fluor 488-conjugated AffiniPure Goat Anti-Rabbit IgG(H+L).