

À des fins de recherche uniquement

Anticorps Polyclonal de lapin anti-SLC7A11/xCT



Numéro de catalogue: 26864-1-AP

Phare

196 Publications

Informations de base

Numéro de catalogue:

26864-1-AP

Taille:

150ul, Concentration: 500 µg/ml by Nanodrop;

Hôte:

Lapin

Isotype:

IgG

Immunogen Catalog Number:

AG25431

Numéro d'acquisition GenBank:

BC012087

Identification du gène (NCBI):

23657

Nom complet:

solute carrier family 7, (cationic amino acid transporter, y+ system) member 11

MW calculé

55 kDa

MW observés:

55 kDa, 35-40 kDa

Méthode de purification:

Purification par affinité contre l'antigène

Dilutions recommandées:

WB 1:500-1:2000

IP 0.5-4.0 µg for IP and 1:500-1:1000 for WB

IHC 1:50-1:500

Applications

Applications testées:

IHC, IP, WB, ELISA

Demandes citées:

CoIP, IF, IHC, RIP, WB

Spécificité de l'espèce:

Humain

Espèces citées:

Chèvre, Humain, souris

Remarque-IHC: il est suggéré de démasquer l'antigène avec un tampon de TE buffer pH 9.0; (*) À défaut, le démasquage de l'antigène peut être effectué avec un tampon citrate pH 6,0.

Contrôles positifs:

WB : cellules A549, cellules BxPC-3, cellules HepG2, cellules U2OS

IP : cellules A549, cellules HepG2

IHC : tissu de carcinome à cellules rénales humain, tissu cérébral de souris

Informations générales

SLC7A11 (also known as xCT) is a membrane transporter involved in the uptake of cystine. It promotes glutathione synthesis through the uptake of cystine and the concomitant release of glutamate. This, in turn, protects cells from oxidative stress, maintains cellular redox balance, and prevents cell death induced by lipid peroxidation. SLC7A11 has been identified as a potential target for cancer therapeutics. It is overexpressed in multiple malignant tumors and is closely associated with the growth, prognosis, metastasis, and treatment response of various cancers including lung cancer. 26864-1-AP recognizes the 55 kDa and 35 kDa protein similar to the paper published. (PMID: 32188872)

Publications notables

Autrice	Pubmed ID	Journal	Application
Yanan Zhao	36166594	J Agric Food Chem	WB
Ben Li	36290297	Biology (Basel)	WB
Yini Dang	36297287	Pharmaceuticals (Basel)	WB

Stockage

Stockage:

Stocker à -20°C. Stable pendant un an après l'expédition.

Tampon de stockage:

PBS avec azoture de sodium à 0,02 % et glycérol à 50 % pH 7,3

L'aliquotage n'est pas nécessaire pour le stockage à -20C

*** Les 20ul contiennent 0,1% de BSA.

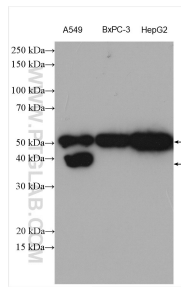
For technical support and original validation data for this product please contact:

T: 1 (888) 4PTGLAB (1-888-478-4522) (toll free in USA), or 1(312) 455-8498 (outside USA)

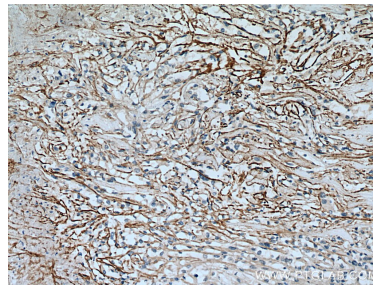
E: proteintech@ptglab.com
W: ptglab.com

This product is exclusively available under Proteintech Group brand and is not available to purchase from any other manufacturer.

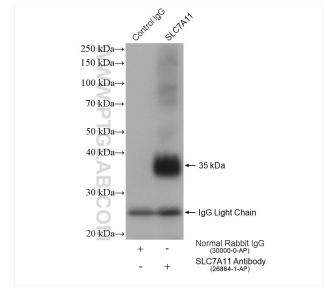
Données de validation sélectionnées



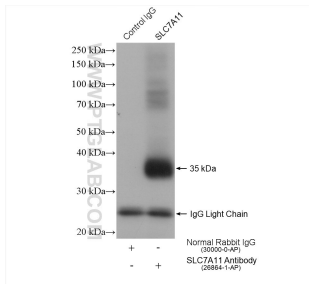
Various lysates were subjected to SDS PAGE followed by western blot with 26864-1-AP (SLC7A11/xCT antibody) at dilution of 1:1000 incubated at room temperature for 1.5 hours.



Immunohistochemical analysis of paraffin-embedded human renal cell carcinoma tissue slide using 26864-1-AP (SLC7A11/xCT antibody) at dilution of 1:200 (under 10x lens). Heat mediated antigen retrieval with Tris-EDTA buffer (pH 9.0).



IP result of anti-SLC7A11/xCT(IP:26864-1-AP, 4ug; Detection:26864-1-AP 1:800) with A549 cells lysate 960 ug.



IP result of anti-SLC7A11/xCT(IP:26864-1-AP, 4ug; Detection:26864-1-AP 1:800) with HepG2 cells lysate 1720 ug.