

À des fins de recherche uniquement

Anticorps Polyclonal de lapin anti-ADAM12



Numéro de catalogue: 26928-1-AP

Informations de base

Numéro de catalogue: 26928-1-AP	Numéro d'acquisition GenBank: BC060804	Méthode de purification: Purification par affinité contre l'antigène
Taille: 150ul , Concentration: 300 µg/ml by Nanodrop and 267 µg/ml by Bradford method using BSA as the standard;	Identification du gène (NCBI): 8038	Dilutions recommandées: WB 1:500-1:1000 IHC 1:50-1:500
Hôte: Lapin	Nom complet: ADAM metallopeptidase domain 12	
Isotype: IgG	MW calculé: 909 aa, 100 kDa	
Immunogen Catalog Number: AG17474	MW observés: 68 kDa	

Applications

Applications testées:

IHC, WB, ELISA

Spécificité de l'espèce:

Humain, rat, souris

Remarque-IHC: il est suggéré de démasquer l'antigène avec un tampon de TE buffer pH 9,0; (*) À défaut, le démasquage de l'antigène peut être effectué avec un tampon citrate pH 6,0.

Contrôles positifs:

WB : tissu cérébral de souris, cellules A431, cellules A549, tissu cérébral de rat

IHC : tissu de cancer de l'endomètre humain,

Informations générales

ADAM12, also named as MLTN and Meltrin-alpha, is involved in skeletal muscle regeneration, specifically at the onset of cell fusion. It is also involved in macrophage-derived giant cells (MGC) and osteoclast formation from mononuclear precursors. ADAM12 is expressed in human malignant tumors. It is involved in the regulation of growth factor activities and integrin functions, leading to promotion of cell growth and invasion, although the precise mechanisms of these are not clear at the present time. (PMID:17355265) ADAM12's ability to degrade extracellular matrix components likely allows it to detach cancer cells from the basement membrane and assist them on their route to metastasis. But the protein's role not just as a biomarker of breast cancer but as a gateway to cancer cell migration is only now being understood. ADAM12 has 2 isoforms with the calculated molecular mass of 100 and 80 kDa, and this antibody can recognize all isoforms of ADAM12. ADAM12 has 4 forms: 120kd full-length form, 90 kDa mature (processed form that lack the prodomain), 50-68 kDa degradation product and 27 kDa prodomain.

Stockage

Stockage:

Stocker à -20°C. Stable pendant un an après l'expédition.

Tampon de stockage:

PBS avec azoture de sodium à 0,02 % et glycérol à 50 % pH 7,3

L'aliquotage n'est pas nécessaire pour le stockage à -20C

*** Les 20ul contiennent 0,1% de BSA.

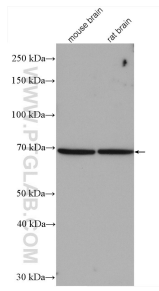
For technical support and original validation data for this product please contact:

T: 1 (888) 4PTGLAB (1-888-478-4522) (toll free in USA), or 1(312) 455-8498 (outside USA)

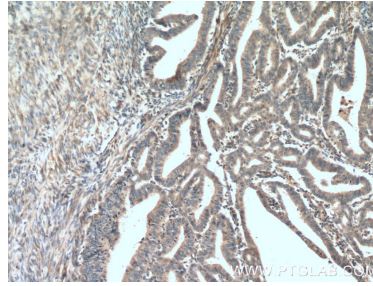
E: proteintech@ptglab.com
W: ptglab.com

This product is exclusively available under Proteintech Group brand and is not available to purchase from any other manufacturer.

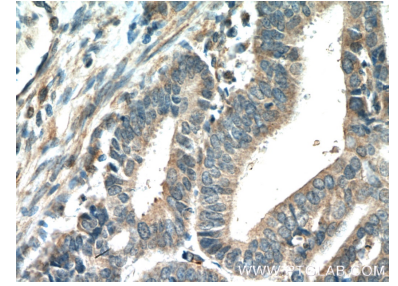
Données de validation sélectionnées



Various lysates were subjected to SDS PAGE followed by western blot with 26928-1-AP (ADAM12 antibody) at dilution of 1:600 incubated at room temperature for 1.5 hours.



Immunohistochemical analysis of paraffin-embedded human endometrial cancer tissue slide using 26928-1-AP (ADAM12 Antibody) at dilution of 1:200 (under 10x lens). Heat mediated antigen retrieval with Tris-EDTA buffer (pH 9.0).



Immunohistochemical analysis of paraffin-embedded human endometrial cancer tissue slide using 26928-1-AP (ADAM12 Antibody) at dilution of 1:200 (under 40x lens). Heat mediated antigen retrieval with Tris-EDTA buffer (pH 9.0).