

À des fins de recherche uniquement

Anticorps Polyclonal de lapin anti-Fibrillin 1



Numéro de catalogue: 26935-1-AP

1 Publications

Informations de base

Numéro de catalogue:

26935-1-AP

Numéro d'acquisition GenBank:

BC146854

Méthode de purification:

Purification par affinité contre l'antigène

Taille:

150ul, Concentration: 800 µg/ml by Nanodrop and 400 µg/ml by Bradford method using BSA as the standard;

Identification du gène (NCBI):

2200

Dilutions recommandées:

IHC 1:400-1:1600
IF 1:50-1:500

Nom complet:

fibrillin 1

Hôte:

Lapin

Isotype:

IgG

Immunogen Catalog Number:

AG25342

Applications

Applications testées:

FC, IF, IHC, ELISA

Contrôles positifs:

IHC : tissu de cancer du sein humain,

Demandes citées:

IHC

IF : cellules SH-SY5Y,

Spécificité de l'espèce:

Humain

Espèces citées:

Humain

Remarque-IHC: il est suggéré de démasquer l'antigène avec un tampon de TE buffer pH 9,0; (*) A défaut, le démasquage de l'antigène peut être effectué avec un tampon citrate pH 6,0.

Informations générales

Fibrillin-1 belongs to the fibrillin family. Fibrillins are structural components of 10-12 nm extracellular calcium-binding microfibrils, which occur either in association with elastin or in elastin-free bundles. Fibrillin-1-containing microfibrils provide long-term force bearing structural support. Defects in Fibrillin-1 are a cause of Marfan syndrome (MFS), isolated ectopia lentis (EL), Weill-Marchesani syndrome autosomal dominant (ADWMS), Shprintzen-Goldberg craniosynostosis syndrome (SGS) or MASS syndrome. This antibody is specific to Fibrillin-1.

Publications notables

Autrice	Pubmed ID	Journal	Application
Yimin Li	36119108	Front Immunol	IHC

Stockage

Stockage:

Stocker à -20°C. Stable pendant un an après l'expédition.

Tampon de stockage:

PBS avec azoture de sodium à 0,02 % et glycérol à 50 % pH 7,3

L'aliquotage n'est pas nécessaire pour le stockage à -20C

*** Les 20ul contiennent 0,1% de BSA.

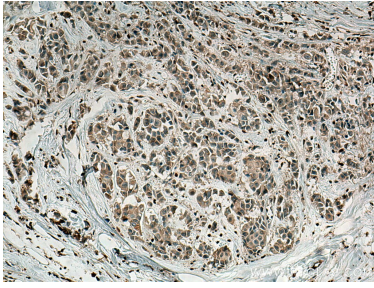
For technical support and original validation data for this product please contact:

T: 1 (888) 4PTGLAB (1-888-478-4522) (toll free in USA), or 1(312) 455-8498 (outside USA)

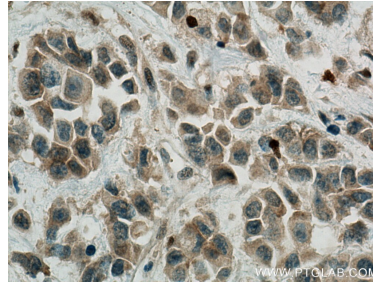
E: proteintech@ptglab.com
W: ptglab.com

This product is exclusively available under Proteintech Group brand and is not available to purchase from any other manufacturer.

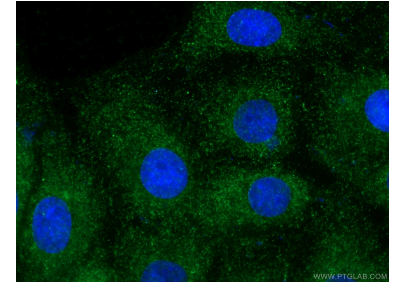
Données de validation sélectionnées



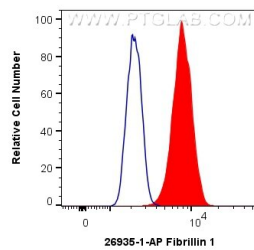
Immunohistochemical analysis of paraffin-embedded human breast cancer tissue slide using 26935-1-AP (Fibrillin 1 antibody) at dilution of 1:800 (under 10x lens). Heat mediated antigen retrieval with Tris-EDTA buffer (pH 9.0).



Immunohistochemical analysis of paraffin-embedded human breast cancer tissue slide using 26935-1-AP (Fibrillin 1 antibody) at dilution of 1:800 (under 40x lens). Heat mediated antigen retrieval with Tris-EDTA buffer (pH 9.0).



Immunofluorescent analysis of (-20°C Ethanol) fixed SH-SY5Y cells using 26935-1-AP (Fibrillin 1 antibody), at dilution of 1:100 and CoraLite®488-Conjugated AffiniPure Goat Anti-Rabbit IgG(H+L).



1X10⁶ A431 cells were intracellularly stained with 0.4 ug Anti-Human Fibrillin 1 (26935-1-AP) and CoraLite®488-Conjugated AffiniPure Goat Anti-Rabbit IgG(H+L) at dilution 1:1000 (red), or 0.4 ug Isotype Control. Cells were fixed with 4% PFA and permeabilized with Flow Cytometry Perm Buffer (PF00011-C).