

À des fins de recherche uniquement

# Anticorps Polyclonal de lapin anti-Bcl-XL



Numéro de catalogue: 26967-1-AP

60 Publications

## Informations de base

Numéro de catalogue:

26967-1-AP

Taille:

150ul, Concentration: 450 µg/ml by Nanodrop and 433 µg/ml by Bradford method using BSA as the standard;

Hôte:

Lapin

Isotype:

IgG

Immunogen Catalog Number:

AG25604

Numéro d'acquisition GenBank:

BC019307

Identification du gène (NCBI):

598

Nom complet:

BCL2-like 1

MW calculé

26 kDa

MW observés:

30 kDa

Méthode de purification:

Purification par affinité contre l'antigène

Dilutions recommandées:

WB 1:500-1:2000

IP 0.5-4.0 µg for IP and 1:500-1:2000 for WB

IHC 1:50-1:500

## Applications

Applications testées:

FC, IHC, IP, WB, ELISA

Demandes citées:

IF, IHC, WB

Spécificité de l'espèce:

Humain, souris

Espèces citées:

canin, Humain, rat, souris

**Remarque-IHC: il est suggéré de démasquer l'antigène avec un tampon de TE buffer pH 9,0; (\*) À défaut, 'le démasquage de l'antigène peut être 'effectué avec un tampon citrate pH 6,0.**

Contrôles positifs:

WB : cellules NIH/3T3, cellules RAW 264.7

IP : cellules NIH/3T3,

IHC : tissu testiculaire humain, tissu de cancer du poumon humain

## Informations générales

BCL2L1 is a member of the BCL-2 protein family. BCL2L1 is expressed as three isoforms, Bcl-X(L), Bcl-X(s) and Bcl-X(beta), and is located at the outer mitochondrial membrane. The Bcl-XL isoform is a 233 amino acid protein, acting as an apoptotic inhibitor. Bcl-XL can form heterodimers with BAX, BAK or BCL2, and the heterodimerization with BAX does not seem to be required for anti-apoptotic activity. The Bcl-XS isoform is a shorter variant that is 178 amino acids in length and lacks a 63 amino acid region (amino acids 126-188), acting as an apoptotic activator. This antibody can recognize Bcl-XL, Bcl-XS and Bcl-X(Beta).

## Publications notables

Autrice	Pubmed ID	Journal	Application
Guibin Lin	31607919	Front Pharmacol	WB
Jiangjiang Fan	30246250	J Cell Physiol	WB
Xiao-Lei Xin	31542790	Med Sci Monit	WB

## Stockage

Stockage:

Stocker à -20°C. Stable pendant un an après l'expédition.

Tampon de stockage:

PBS avec azoture de sodium à 0,02 % et glycérol à 50 % pH 7,3

L'aliquotage n'est pas nécessaire pour le stockage à -20C

\*\*\* Les 20ul contiennent 0,1% de BSA.

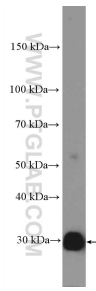
For technical support and original validation data for this product please contact:

T: 1 (888) 4PTGLAB (1-888-478-4522) (toll free in USA), or 1(312) 455-8498 (outside USA)

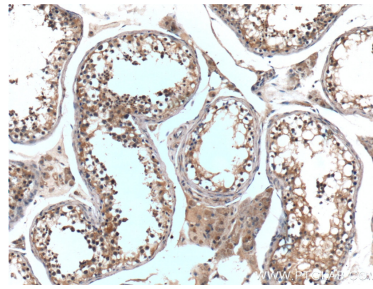
E: [proteintech@ptglab.com](mailto:proteintech@ptglab.com)  
W: [ptglab.com](http://ptglab.com)

This product is exclusively available under Proteintech Group brand and is not available to purchase from any other manufacturer.

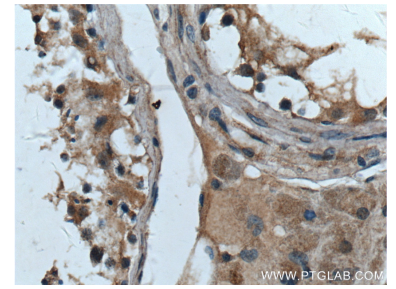
## Données de validation sélectionnées



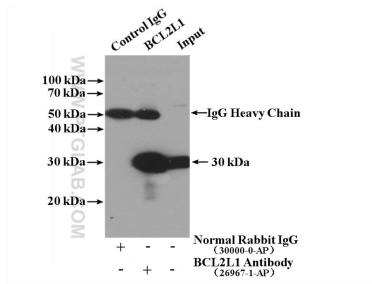
NIH/3T3 cells were subjected to SDS PAGE followed by western blot with 26967-1-AP (Bcl-XL antibody) at dilution of 1:1000 incubated at room temperature for 1.5 hours.



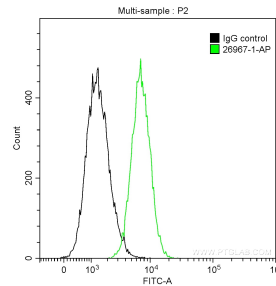
Immunohistochemical analysis of paraffin-embedded human testis tissue slide using 26967-1-AP (Bcl-XL antibody) at dilution of 1:200 (under 10x lens).



Immunohistochemical analysis of paraffin-embedded human testis tissue slide using 26967-1-AP (Bcl-XL antibody) at dilution of 1:200 (under 40x lens).



IP result of anti-Bcl-XL (IP:26967-1-AP, 4ug; Detection:26967-1-AP 1:1000) with NIH/3T3 cells lysate 2000 ug.



$1 \times 10^6$  Jurkat cells were intracellularly stained with 0.2 ug Anti-Human Bcl-XL (26967-1-AP) and CoraLite®488-Conjugated AffiniPure Goat Anti-Rabbit IgG(H+L) at dilution 1:1000 (green), and 0.2 ug Control Antibody. Cells were fixed with 90% MeOH.