

À des fins de recherche uniquement

Anticorps Polyclonal de lapin anti- LCN2



Numéro de catalogue: 26991-1-AP

Phare

19 Publications

Informations de base

Numéro de catalogue:

26991-1-AP

Taille:

150ul , Concentration: 350 µg/ml by Nanodrop and 350 µg/ml by Bradford method using BSA as the standard;

Hôte:

Lapin

Isotype:

IgG

Immunogen Catalog Number:

AG25715

Numéro d'acquisition GenBank:

Identification du gène (NCBI):

3934

Nom complet:

lipocalin 2

MW observés:

25 kDa

Méthode de purification:

Purification par affinité contre l'antigène

Dilutions recommandées:

WB 1:500-1:2000

IHC 1:50-1:500

IF 1:50-1:500

Applications

Applications testées:

FC, IF, IHC, WB, ELISA

Demandes citées:

IF, IHC, WB

Spécificité de l'espèce:

Humain

Espèces citées:

Humain

Remarque-IHC: il est suggéré de démasquer l'antigène avec un tampon de TE buffer pH 9,0; (*) A défaut, 'le démasquage de l'antigène peut être 'effectué avec un tampon citrate pH 6,0.

Contrôles positifs:

WB : tissu salivaire humain, cellules HT-29, salive humaine, salive humaine

IHC : tissu de cancer du côlon humain, tissu de cancer de l'estomac humain

IF : cellules RAW 264.7, cellules A431

Informations générales

Neutrophil gelatinase-associated lipocalin (NGAL, also known as human neutrophil lipocalin, lipocalin-2, siderocalin, or LCN2) is a small molecule of almost 25 kDa that belongs to the well-defined superfamily of proteins called lipocalins. NGAL initially found in activated neutrophils, in accordance with its role as an innate antibacterial factor. However, it subsequently was shown that many other types of cells, including in the kidney tubule, may produce NGAL in response to various injuries. NGAL may become one of the most promising next-generation biomarkers in clinical nephrology and beyond.

Publications notables

Autrice	Pubmed ID	Journal	Application
Xiaojun Ren	36273006	Nat Commun	IF
Zongrui Jiang	34721542	Front Genet	IHC
Yunfeng Hou	35543324	J Agric Food Chem	WB,IHC

Stockage

Stockage:

Stocker à -20°C. Stable pendant un an après l'expédition.

Tampon de stockage:

PBS avec azoture de sodium à 0,02 % et glycérol à 50 % pH 7,3

L'aliquotage n'est pas nécessaire pour le stockage à -20C

*** Les 20ul contiennent 0,1% de BSA.

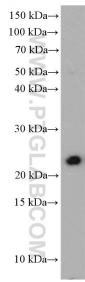
For technical support and original validation data for this product please contact:

T: 1 (888) 4PTGLAB (1-888-478-4522) (toll free in USA), or 1(312) 455-8498 (outside USA)

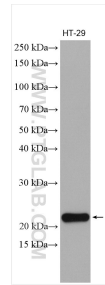
E: proteintech@ptglab.com
W: ptglab.com

This product is exclusively available under Proteintech Group brand and is not available to purchase from any other manufacturer.

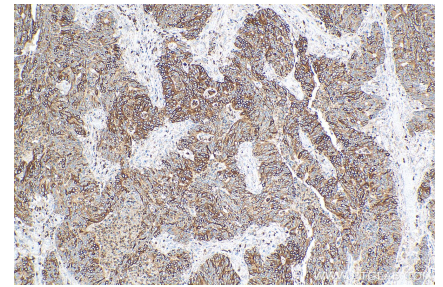
Données de validation sélectionnées



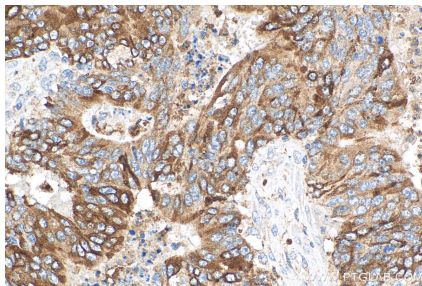
human saliva were subjected to SDS PAGE followed by western blot with 26991-1-AP (LCN2 antibody) at dilution of 1:1000 incubated at room temperature for 1.5 hours.



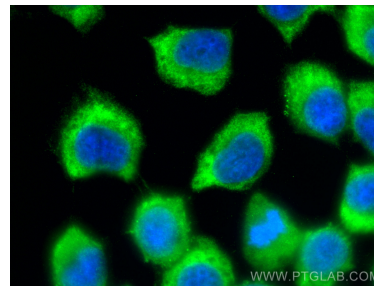
HT-29 cells were subjected to SDS PAGE followed by western blot with 26991-1-AP (LCN2 antibody) at dilution of 1:5000 incubated at room temperature for 1.5 hours.



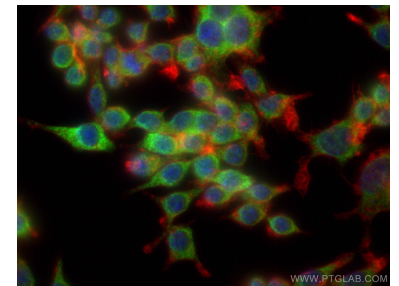
Immunohistochemical analysis of paraffin-embedded human colon cancer tissue slide using 26991-1-AP (LCN2 antibody) at dilution of 1:200 (under 10x lens). Heat mediated antigen retrieval with Tris-EDTA buffer (pH 9.0).



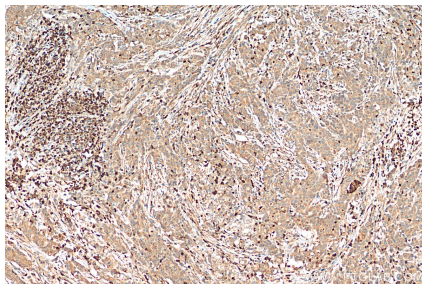
Immunohistochemical analysis of paraffin-embedded human colon cancer tissue slide using 26991-1-AP (LCN2 antibody) at dilution of 1:200 (under 40x lens). Heat mediated antigen retrieval with Tris-EDTA buffer (pH 9.0).



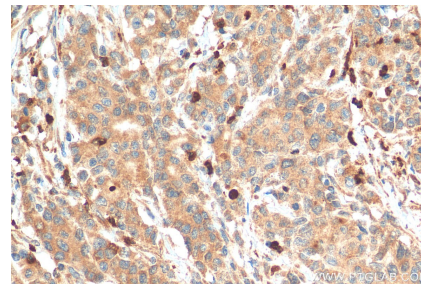
Immunofluorescent analysis of (-20°C Ethanol) fixed A431 cells using LCN2 antibody (26991-1-AP) at dilution of 1:200 and CoralLite®488-Conjugated AffiniPure Goat Anti-Rabbit IgG(H+L).



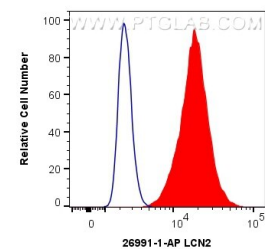
Immunofluorescent analysis of (4% PFA) fixed RAW 264.7 cells using LCN2 antibody (26991-1-AP) at dilution of 1:200 and CoralLite®488-Conjugated AffiniPure Goat Anti-Rabbit IgG(H+L), CL594-phalloidin (red).



Immunohistochemical analysis of paraffin-embedded human stomach cancer tissue slide using 26991-1-AP (LCN2 antibody) at dilution of 1:200 (under 10x lens). Heat mediated antigen retrieval with Tris-EDTA buffer (pH 9.0).



Immunohistochemical analysis of paraffin-embedded human stomach cancer tissue slide using 26991-1-AP (LCN2 antibody) at dilution of 1:200 (under 40x lens). Heat mediated antigen retrieval with Tris-EDTA buffer (pH 9.0).



1X10⁶ A431 cells were intracellularly stained with 0.4 ug Anti-Human LCN2 (26991-1-AP) and CoralLite®488-Conjugated AffiniPure Goat Anti-Rabbit IgG(H+L) at dilution 1:1000 (red), or 0.4 ug Isotype Control. Cells were fixed with 4% PFA and permeabilized with Flow Cytometry Perm Buffer (PF00011-C).