

À des fins de recherche uniquement

Anticorps Polyclonal de lapin anti-S100A9



Numéro de catalogue: 26992-1-AP

Phare

31 Publications

Informations de base

Numéro de catalogue:
26992-1-AP

Taille:
150ul, Concentration: 500 µg/ml by Nanodrop and 367 µg/ml by Bradford method using BSA as the standard;

Hôte:
Lapin

Isotype:
IgG

Immunogen Catalog Number:
AG25764

Numéro d'acquisition GenBank:
BC047681

Identification du gène (NCBI):
6280

Nom complet:
S100 calcium binding protein A9

MW calculé
13 kDa

MW observés:
14 kDa

Méthode de purification:
Purification par affinité contre l'antigène

Dilutions recommandées:
WB 1:500-1:2000
IP 0.5-4.0 ug for IP and 1:500-1:2000 for WB
IHC 1:50-1:500
IF 1:200-1:800

Applications

Applications testées:
IF, IHC, IP, WB, ELISA

Demandes citées:
CoIP, FC, IF, IHC, IP, WB

Spécificité de l'espèce:
Humain, souris

Espèces citées:
Humain, rat, souris

Remarque-IHC: il est suggéré de démasquer l'antigène avec un tampon de TE buffer pH 9,0; (*) À défaut, le démasquage de l'antigène peut être effectué avec un tampon citrate pH 6,0.

Contrôles positifs:

WB : cellules HL-60, cellules MCF-7

IP : cellules MCF-7,

IHC : tissu de cancer du sein humain, tissu d'amygdalite humaine, tissu de cancer de l'oesophage humain, tissu de cancer du foie humain, tissu splénique de souris

IF : cellules HeLa, cellules A549, cellules HepG2

Informations générales

S100A9 is a calcium binding protein as a member of the S100 family of proteins. S100 proteins are low molecular weight (9 to 14 kDa) intracellular calcium-binding proteins that control key cellular pathways including regulation of the cytoskeleton, cell migration and adhesion, and host oxidative defense. S100A9 may exist as a homodimer, heterodimer with an S100A8 partner (S100A8/A9), or as a heterotetramer with an S100A8 partner (S100A8/A9). S100A8 and S100A9 are found intracellularly in granulocytes, monocytes, and early differentiation stages of macrophages.

Publications notables

Autrice	Pubmed ID	Journal	Application
Yi-Han Lin	32963032	Mol Cell Proteomics	WB
Li Zhang	32920982	Acta Physiol (Oxf)	WB
Yize Sun	34673424	Biomed Pharmacother	WB

Stockage

Stockage:

Stocker à -20°C. Stable pendant un an après l'expédition.

Tampon de stockage:

PBS avec azoture de sodium à 0,02 % et glycérol à 50 % pH 7,3

L'aliquotage n'est pas nécessaire pour le stockage à -20C

*** Les 20ul contiennent 0,1% de BSA.

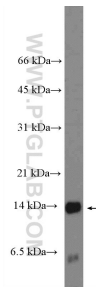
For technical support and original validation data for this product please contact:

T: 1 (888) 4PTGLAB (1-888-478-4522) (toll free in USA), or 1(312) 455-8498 (outside USA)

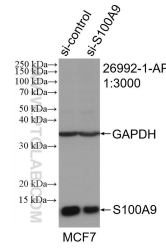
E: proteintech@ptglab.com
W: ptglab.com

This product is exclusively available under Proteintech Group brand and is not available to purchase from any other manufacturer.

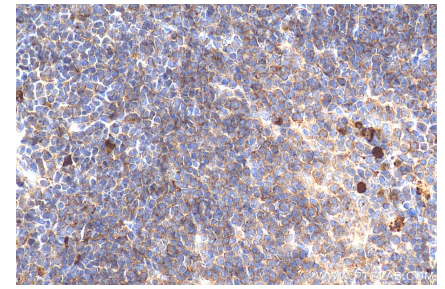
Données de validation sélectionnées



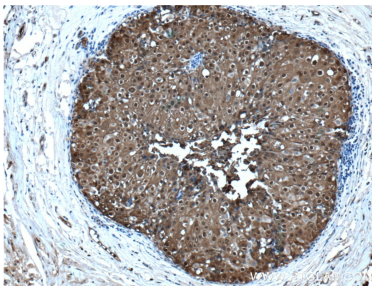
HL-60 cells were subjected to SDS PAGE followed by western blot with 26992-1-AP (S100A9 Antibody) at dilution of 1:1000 incubated at room temperature for 1.5 hours.



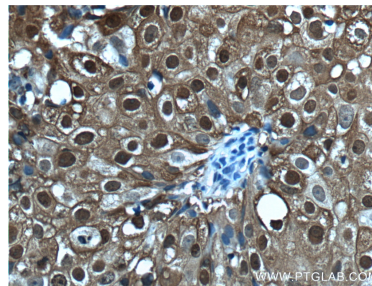
WB result of S100A9 antibody (26992-1-AP; 1:3000; incubated at room temperature for 1.5 hours) with sh-Control and sh-S100A9 transfected MCF-7 cells.



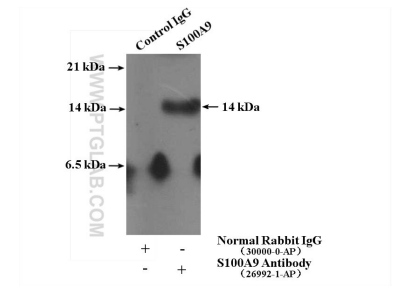
Immunohistochemical analysis of paraffin-embedded mouse spleen tissue slide using 26992-1-AP (S100A9 antibody) at dilution of 1:200 (under 40x lens). Heat mediated antigen retrieval with Tris-EDTA buffer (pH 9.0).



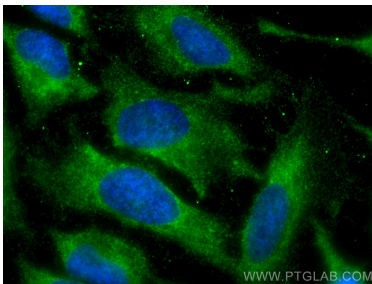
Immunohistochemical analysis of paraffin-embedded human breast cancer tissue slide using 26992-1-AP (S100A9 Antibody) at dilution of 1:200 (under 10x lens). Heat mediated antigen retrieval with Tris-EDTA buffer (pH 9.0).



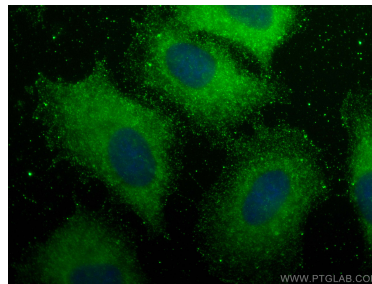
Immunohistochemical analysis of paraffin-embedded human breast cancer tissue slide using 26992-1-AP (S100A9 Antibody) at dilution of 1:200 (under 40x lens). Heat mediated antigen retrieval with Tris-EDTA buffer (pH 9.0).



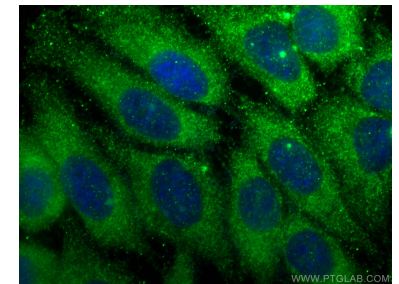
IP result of anti-S100A9 (IP:26992-1-AP, 4ug; Detection:26992-1-AP 1:1000) with MCF-7 cells lysate 2800 ug.



Immunofluorescent analysis of (-20°C Methanol) fixed HeLa cells using S100A9 antibody (26992-1-AP) at dilution of 1:400 and CoraLite®488-Conjugated AffiniPure Goat Anti-Rabbit IgG(H+L).



Immunofluorescent analysis of (-20°C Methanol) fixed A549 cells using S100A9 antibody (26992-1-AP) at dilution of 1:200 and CoraLite®488-Conjugated AffiniPure Goat Anti-Rabbit IgG(H+L).



Immunofluorescent analysis of (-20°C Ethanol) fixed HepG2 cells using S100A9 antibody (26992-1-AP) at dilution of 1:400 and CoraLite®488-Conjugated AffiniPure Goat Anti-Rabbit IgG(H+L).