

À des fins de recherche uniquement

Anticorps Polyclonal de lapin anti-WFS1



Numéro de catalogue: 26995-1-AP

Phare

10 Publications

Informations de base

Numéro de catalogue: 26995-1-AP	Numéro d'acquisition GenBank: BC030130	Méthode de purification: Purification par affinité contre l'antigène
Taille: 150ul , Concentration: 770 µg/ml by Nanodrop;	Identification du gène (NCBI): 7466	Dilutions recommandées: IHC 1:500-1:2000 IF 1:50-1:500
Hôte: Lapin	Nom complet: Wolfram syndrome 1 (wolframin)	
Isotype: IgG	MW calculé 890 aa, 100 kDa	
Immunogen Catalog Number: AG25724		

Applications

Applications testées: IF, IHC, ELISA	Contrôles positifs: IHC : tissu cérébral de rat, tissu cérébral de souris IF : tissu cérébral de souris,
Demandes citées: IF, IHC, WB	
Spécificité de l'espèce: Humain, rat, souris	
Espèces citées: Humain, poisson-zèbre, rat, souris	

Remarque-IHC: il est suggéré de démasquer l'antigène avec un tampon de TE buffer pH 9,0; (*) À défaut, le démasquage de l'antigène peut être effectué avec un tampon citrate pH 6,0.

Informations générales

Wolfram syndrome protein (WFS1), also called wolframin, is a transmembrane protein, which is located primarily in the endoplasmic reticulum and its expression is induced in response to ER stress, partially through transcriptional activation. ER localization suggests that WFS1 protein has physiological functions in membrane trafficking, secretion, processing and/or regulation of ER calcium homeostasis. It is ubiquitously expressed with highest levels in brain, pancreas, heart, and insulinoma beta-cell lines. Mutations of the WFS1 gene are responsible for two hereditary diseases, autosomal recessive Wolfram syndrome and autosomal dominant low frequency sensorineural hearing loss.

Publications notables

Autrice	Pubmed ID	Journal	Application
Jean-Christophe Delpech	34524859	Sci Transl Med	IF
Linlin Wang	34848728	Nat Commun	WB,IF
Kun Hu	34006618	J Med Genet	WB

Stockage

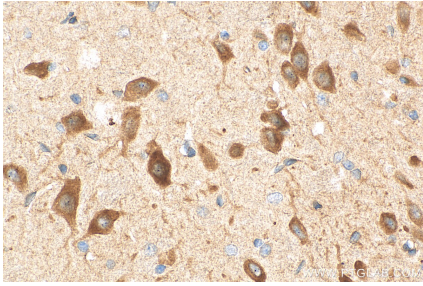
Stockage:
Stocker à -20°C. Stable pendant un an après l'expédition.
Tampon de stockage:
PBS avec azoture de sodium à 0,02 % et glycérol à 50 % pH 7,3
L'aliquotage n'est pas nécessaire pour le stockage à -20C

*** Les 20ul contiennent 0,1% de BSA.

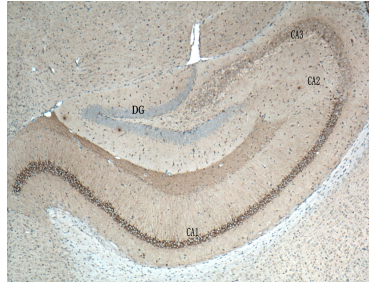
For technical support and original validation data for this product please contact:
T: 1 (888) 4PTGLAB (1-888-478-4522) (toll free in USA), or 1(312) 455-8498 (outside USA)
E: proteintech@ptglab.com
W: ptglab.com

This product is exclusively available under Proteintech Group brand and is not available to purchase from any other manufacturer.

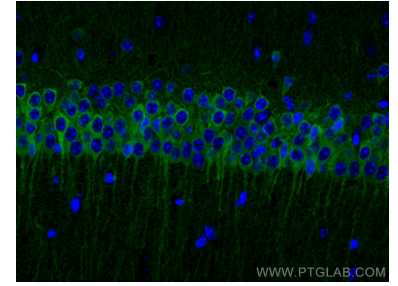
Données de validation sélectionnées



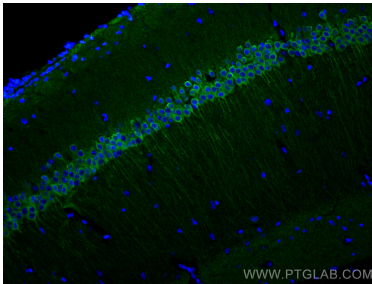
Immunohistochemical analysis of paraffin-embedded rat brain tissue slide using 26995-1-AP (WFS1 antibody) at dilution of 1:1000 (under 40x lens). Heat mediated antigen retrieval with Tris-EDTA buffer (pH 9.0).



Immunohistochemical analysis of paraffin-embedded mouse brain tissue slide using 26995-1-AP (WFS1 antibody) at dilution of 1:400 (under 4x lens). Heat mediated antigen retrieval with Tris-EDTA buffer (pH 9.0).



Immunofluorescent analysis of (4% PFA) fixed mouse brain tissue using WFS1 antibody (26995-1-AP) at dilution of 1:200 and CoraLite®488-Conjugated AffiniPure Goat Anti-Rabbit IgG(H+L).



Immunofluorescent analysis of (4% PFA) fixed mouse brain tissue using WFS1 antibody (26995-1-AP) at dilution of 1:200 and CoraLite®488-Conjugated AffiniPure Goat Anti-Rabbit IgG(H+L).