

À des fins de recherche uniquement

Anticorps Polyclonal de lapin anti-CITED1



Numéro de catalogue: 26999-1-AP

Informations de base

Numéro de catalogue: 26999-1-AP	Numéro d'acquisition GenBank: BC004240	Méthode de purification: Purification par affinité contre l'antigène
Taille: 150ul, Concentration: 1000 µg/ml by Nanodrop and 467 µg/ml by Bradford method using BSA as the standard;	Identification du gène (NCBI): 4435	Dilutions recommandées: WB 1:1000-1:4000 IP 0.5-4.0 ug for IP and 1:200-1:1000 for WB
Hôte: Lapin	Nom complet: Cbp/p300-interacting transactivator, with Glu/Asp-rich carboxy-terminal domain, 1	IHC 1:500-1:2000 IF 1:50-1:500
Isotype: IgG	MW calculé 27 kDa	
Immunogen Catalog Number: AG24643	MW observés: 30 kDa	

Applications

Applications testées:
FC, IF, IHC, IP, WB, ELISA

Spécificité de l'espèce:
Humain, rat, souris

Remarque-IHC: il est suggéré de démasquer l'antigène avec un tampon de TE buffer pH 9.0; (*) À défaut, le démasquage de l'antigène peut être effectué avec un tampon citrate pH 6.0.

Contrôles positifs:

WB : tissu testiculaire de rat, cellules A375, tissu testiculaire de souris

IP : cellules A375,

IHC : tissu de cancer du côlon humain, tissu de cancer de la thyroïde humaine, tissu testiculaire de rat

IF : cellules HEK-293,

Informations générales

CITED1, also named as MSG1, belongs to the CITED family. CITED1 is a bifunctional transcriptional cofactor which is able to activate or repress transcription in association with other transcription factors. The CITED1 gene encodes a 27 kDa protein, but a 30 kDa band was also detected in the publication. The elevation of CITED1 may be directly associated with the preneoplastic phenotype (PMID: 23935526, 15272279, 15843474).

Stockage

Stockage:

Stocker à -20°C. Stable pendant un an après l'expédition.

Tampon de stockage:

PBS avec azote de sodium à 0,02 % et glycérol à 50 % pH 7,3

L'aliquotage n'est pas nécessaire pour le stockage à -20C

*** Les 20ul contiennent 0,1% de BSA.

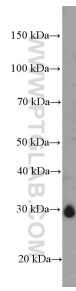
For technical support and original validation data for this product please contact:

T: 1 (888) 4PTGLAB (1-888-478-4522) (toll free in USA), or 1(312) 455-8498 (outside USA)

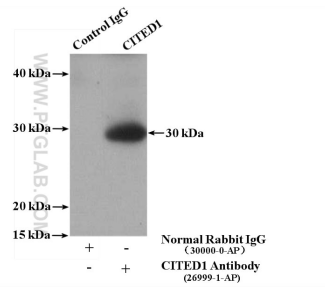
E: proteintech@ptglab.com
W: ptglab.com

This product is exclusively available under Proteintech Group brand and is not available to purchase from any other manufacturer.

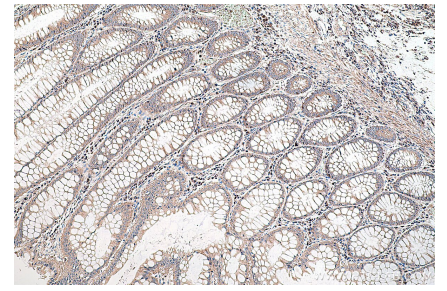
Données de validation sélectionnées



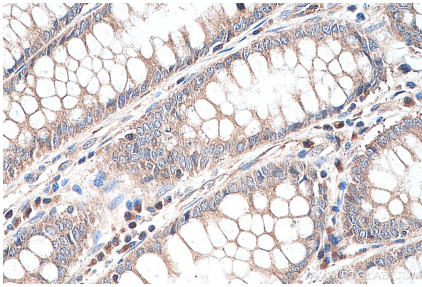
rat testis tissue were subjected to SDS PAGE followed by western blot with 26999-1-AP (CITED1 antibody) at dilution of 1:2000 incubated at room temperature for 1.5 hours.



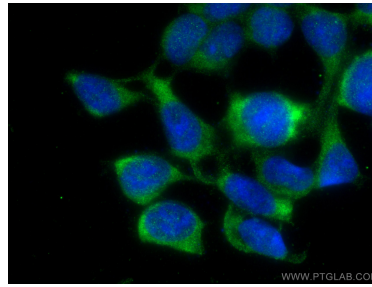
IP Result of anti-CITED1 (IP:26999-1-AP, 4ug; Detection:26999-1-AP 1:300) with A375 cells lysate 3000ug.



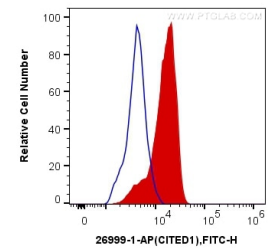
Immunohistochemical analysis of paraffin-embedded human colon cancer tissue slide using 26999-1-AP (CITED1 antibody) at dilution of 1:1000 (under 10x lens). Heat mediated antigen retrieval with Tris-EDTA buffer (pH 9.0).



Immunohistochemical analysis of paraffin-embedded human colon cancer tissue slide using 26999-1-AP (CITED1 antibody) at dilution of 1:1000 (under 40x lens). Heat mediated antigen retrieval with Tris-EDTA buffer (pH 9.0).



Immunofluorescent analysis of (-20°C Ethanol) fixed HEK-293 cells using CITED1 antibody (26999-1-AP) at dilution of 1:200 and CoraLite®488-Conjugated AffiniPure Goat Anti-Rabbit IgG(H+L).



1x10⁶ HEK-293T cells were intracellularly stained with 0.4 ug Anti-Human CITED1 (26999-1-AP) and CoraLite®488-Conjugated AffiniPure Goat Anti-Rabbit IgG(H+L) at dilution 1:1000 (red), or 0.4 ug Control Antibody. Cells were fixed and permeabilized with Transcription Factor Staining Buffer Kit (PF00011).