

À des fins de recherche uniquement

Anticorps Polyclonal de lapin anti-PI3 Kinase p55 Gamma



Numéro de catalogue: 27035-1-AP

Phare

1 Publications

Informations de base

Numéro de catalogue:

27035-1-AP

Taille:

150ul, Concentration: 850 µg/ml by Nanodrop and 533 µg/ml by Bradford method using BSA as the standard;

Hôte:

Lapin

Isotype:

IgG

Immunogen Catalog Number:

AG25884

Numéro d'acquisition GenBank:

BC021622

Identification du gène (NCBI):

8503

Nom complet:

phosphoinositide-3-kinase, regulatory subunit 3 (gamma)

MW calculé

85 kDa

MW observés:

55 kDa

Méthode de purification:

Purification par affinité contre l'antigène

Dilutions recommandées:

WB 1:500-1:2000

IHC 1:50-1:500

Applications

Applications testées:

IHC, WB, ELISA

Demandes citées:

IHC

Spécificité de l'espèce:

Humain

Espèces citées:

Humain

Remarque-IHC: il est suggéré de démasquer l'antigène avec un tampon de TE buffer pH 9,0; (*) A défaut, 'le démasquage de l'antigène peut être effectué avec un tampon citrate pH 6,0.

Contrôles positifs:

WB : cellules MCF-7, cellules HEK-293, cellules HUVEC

IHC : tissu rénal humain, tissu rénal de souris, tissu testiculaire de souris

Informations générales

PIK3R3, also named as p55PIK, belongs to the PI3K p85 subunit family. It binds to activated (phosphorylated) protein-tyrosine kinases through its SH2 domain and regulates their kinase activity. During INS stimulation, it also binds to IRS-1. It is a component of a heterodimer of p110 (catalytic) and p55 (regulatory) subunits. The antibody is specific to PIK3R3.

Publications notables

| Autrice | Pubmed ID | Journal | Application |
|-----------|-----------|------------------------------------|-------------|
| Ting Wang | 33949204 | Am J Physiol Lung Cell Mol Physiol | IHC |

Stockage

Stockage:

Stocker à -20°C. Stable pendant un an après l'expédition.

Tampon de stockage:

PBS avec azoture de sodium à 0,02 % et glycérol à 50 % pH 7,3

L'aliquotage n'est pas nécessaire pour le stockage à -20C

*** Les 20ul contiennent 0,1% de BSA.

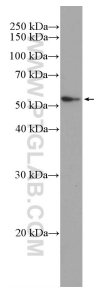
For technical support and original validation data for this product please contact:

T: 1 (888) 4PTGLAB (1-888-478-4522) (toll free in USA), or 1(312) 455-8498 (outside USA)

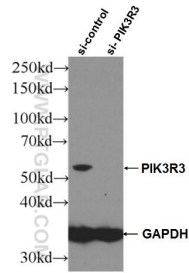
E: proteintech@ptglab.com
W: ptglab.com

This product is exclusively available under Proteintech Group brand and is not available to purchase from any other manufacturer.

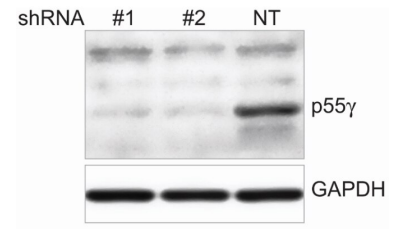
Données de validation sélectionnées



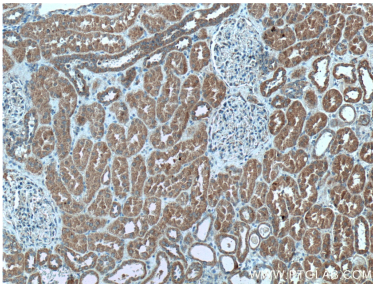
MCF-7 cells were subjected to SDS PAGE followed by western blot with 27035-1-AP (PI 3 Kinase p55 gamma antibody at dilution of 1:1000 incubated at 4 degree celsius over night.



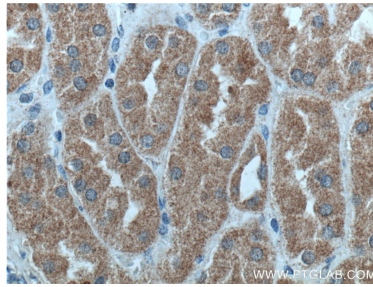
WB result of PI 3 Kinase p55 gamma antibody (27035-1-AP; 1:1000; incubated at room temperature for 1.5 hours) with sh-Control and sh-PI 3 Kinase p55 gamma transfected HEK-293 cells.



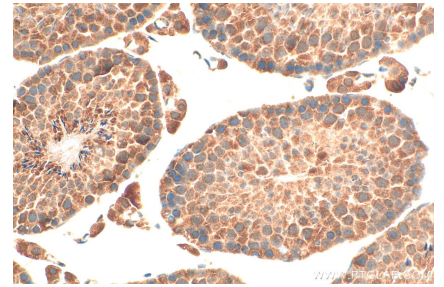
WB result of PIK3R3 antibody (27035-1-AP) on whole cell extract from HUVEC targeted by shRNAs (#1, #2) or a control shRNA (NT). (Data from Dr. Fuqiang Geng, Weill Cornell Medical College).



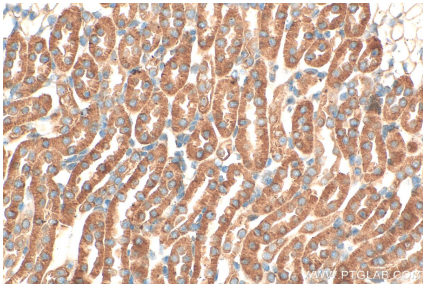
Immunohistochemical analysis of paraffin-embedded human kidney tissue slide using 27035-1-AP (PI 3 Kinase p55 gamma antibody) at dilution of 1:200 (under 10x lens).



Immunohistochemical analysis of paraffin-embedded human kidney tissue slide using 27035-1-AP (PI 3 Kinase p55 gamma antibody) at dilution of 1:200 (under 40x lens).



Immunohistochemical analysis of paraffin-embedded mouse testis tissue slide using 27035-1-AP (PI 3 Kinase p55 Gamma antibody) at dilution of 1:200 (under 40x lens). Heat mediated antigen retrieval with Tris-EDTA buffer (pH 9.0).



Immunohistochemical analysis of paraffin-embedded mouse kidney tissue slide using 27035-1-AP (PI 3 Kinase p55 Gamma antibody) at dilution of 1:200 (under 40x lens). Heat mediated antigen retrieval with Tris-EDTA buffer (pH 9.0).