

À des fins de recherche uniquement

Anticorps Polyclonal de lapin anti-ASXL1



Numéro de catalogue: 27042-1-AP

Informations de base

Numéro de catalogue:
27042-1-AP

Taille:
150ul , Concentration: 900 µg/ml by
Nanodrop and 533 µg/ml by Bradford
method using BSA as the standard;

Hôte:
Lapin

Isotype:
IgG

Immunogen Catalog Number:
AG25874

Numéro d'acquisition GenBank:
BC137278

Identification du gène (NCBI):
171023

Nom complet:
additional sex combs like 1
(Drosophila)

MW observés:
90 kDa

Méthode de purification:
Purification par affinité contre
l'antigène

Dilutions recommandées:
WB 1:500-1:2000

Applications

Applications testées:
WB, ELISA

Spécificité de l'espèce:
Humain

Contrôles positifs:

WB : cellules K-562,

Informations générales

Additional sex combs-like 1 (ASXL1) is a member of the ASXL family, which is involved in epigenetic regulation. It is one of the mammalian Asx homologs. Mutations in the ASXL1 gene are frequently found in myeloid neoplasms, breast cancers and prostate cancers (PMID: 30013160; PMID: 22436456; PMID: 26470845). In patients with myeloid malignancies, ASXL1 mutations are mostly heterozygous frameshift or nonsense mutations that result in C-terminal truncation (PMID: 30982744; PMID: 26095772; PMID: 32683582; PMID: 29643185).

Stockage

Stockage:

Stocker à -20°C. Stable pendant un an après l'expédition.

Tampon de stockage:

PBS avec azoture de sodium à 0,02 % et glycérol à 50 % pH 7,3

L'aliquotage n'est pas nécessaire pour le stockage à -20C

*** Les 20ul contiennent 0,1% de BSA.

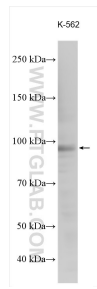
For technical support and original validation data for this product please contact:

T: 1 (888) 4PTGLAB (1-888-478-4522) (toll free
in USA), or 1(312) 455-8498 (outside USA)

E: proteintech@ptglab.com
W: ptglab.com

This product is exclusively available under Proteintech Group brand and is not available to purchase from any other manufacturer.

Données de validation sélectionnées



K-562 cells were subjected to SDS PAGE followed by western blot with 27042-1-AP (ASXL1 antibody) at dilution of 1:1000 incubated at room temperature for 1.5 hours.